



YOUR INDUSTRIAL PARTNER

INDUSTRIAL CAST IRON FOUNDRY PRODUCTION OF GREY AND DUCTILE IRON, FROM 5KG TO 750KG.

The foundry has an annual melting capacity of 30 000 tons.

Fonderie de Niederbronn employs 230 people for a sales turnover of 34M€.

It has been an advanced foundry for more than 300 years. Thanks to recent key investments made on site, and thanks to a skilled workforce, Fonderie de Niederbronn counts today among the most efficient foundries of iron castings in Europe.

Fonderie de Niederbronn is well established in the North-East of France and serves customers throughout Europe

HERITAGE

1984 : Installation of the Disamatic 270 automatic plant for vertical molding. Big production series of grey cast iron pieces up to 50kg each.

1994 : Investment in a hot blasting furnace for a reduced consumption of energy.

2008 : Acquisition of the first high speed machining center dedicated to the modeling workshop.

2010 : Mr Hugh AIKEN acquires the foundry.

2012 : Installation of the HWS horizontal molding line with 1400x1600mm frames, (450+450)mm high, for pieces up to 750kg and short production series.

2013 : Fonderie De Niederbronn enlarges its offer with ductile iron castings.



21, route de Bitche
67110 Niederbronn-les-bains

T. : +33 3 88 80 28 00
contact@fonderiedeniederbronn.com

www.fonderie-de-niederbronn.com



Experience and Quality
since 1769

EQUIPMENT

ENGINEERING DEPARTMENT AND PATTERN SHOP

Technicians of our engineering department work with SOLID EDGE, NX and WORK NC, for assisted Design. Magmasoft is used for our simulations of casting solidification. Our 3D measuring equipment is at disposal from Sample scanning to 3D drawing.

This efficient equipment is very useful for :

- ▶ Exchange data with AEGIS (IGES), STEP, PARASOLID files
- ▶ Competitive solutions for 3D-prototyping
- ▶ Product definition
- ▶ Validation of initial samples
- ▶ Follow up of dimensioning changes and product updating

Several 3- and 5-axes machining centers are dedicated to our pattern shop for the shortest lead time of tooling and first samples

- ▶ Machining of patternplates 1400x1600mm large
- ▶ Machining of patterns up to 2x450mm high
- ▶ Machining of core boxes up to 100 liter



INSTALLATIONS FOR INDUSTRIAL PRODUCTION

MELTING

- ▶ 14 tons hour Continuous grey iron melting in a hot blast cupola
- ▶ 16 tons induction furnace for different melting
- ▶ 40 tons holding furnace.

MOLDING

2 efficient molding lines are installed at the foundry for the production of a large range of iron castings.

- ▶ **Disamatic 270** : this automatic molding line is dedicated to castings up to 50kg, with dimensions up to 780x550x550mm, with an average productivity of 200 molds per hour.
- ▶ **HWS** : This horizontal molding line is equipped with 1400x1600mm molding frames. Two different heights 2x350mm and 2x450mm will adapt the sand volume to the dimensions of your pieces. This line produces 30 to 40 molds per hour. The installation is sized for castings up to 1350 x 1150 x 700mm, pieces up to 750kg.

Cores are produced by cold box process with Lampe and Hansberg machines.

MACHINING, FINISH AND ASSEMBLY

- ▶ Shot-blasting, grinding
- ▶ 2 Johnford machining centers
- ▶ 1 Mazak machining center
- ▶ Painting line : coating or finishing
- ▶ Dedicated assembly and packaging lines

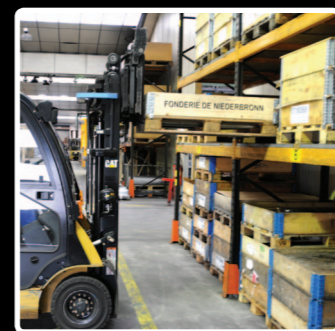
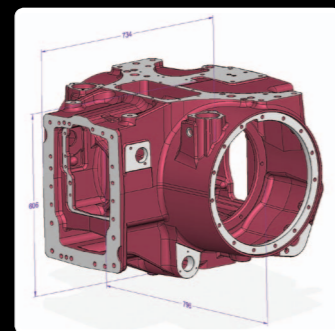
SERVICES

Technical support

Our know-how in foundry technics is at your disposal for any alternatives and economic solutions to welding or assembling, or to pressed parts.

Sales administration, sourcing and logistics

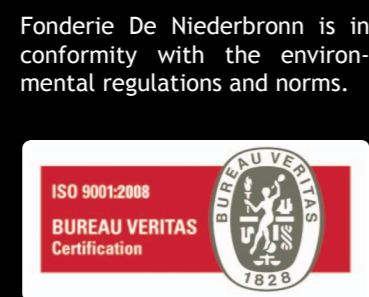
Our customers appreciate the involvement of our sales administration. We always find the best possible logistic flow according to your needs. We also manage for our customers the sourcing of operations like enameling, or other coating, heat treatment, or any other specific request.



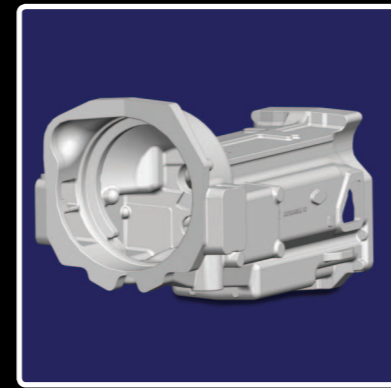
QUALITY MANAGEMENT SYSTEM

Quality is the heart of our industrial process. All of our efforts focus on customer satisfaction, according to ISO 9001 v.2008 and ASME code IV standards, with the help of

- ▶ Continuous spectrometric measurement of the chemical composition of the casting
- ▶ Continuous measurement of the casting temperature
- ▶ Daily mechanical tests of traction, ductility, pressure, destructive testing
- ▶ Analyses of molding sand and raw materials in our laboratory
- ▶ 3D-measuring up to 2000x1200x1000mm with 3D-Equipment



CAST IRON PARTS AND MAIN MARKETS



AGRICULTURAL MACHINERY

Housings, bearing
Massive and infiltrated parts
Ductile and grey cast iron



SPECIAL MACHINES

Frames, tables, connection parts
Economic solutions with the replacement of welded parts
Flexible production with short series



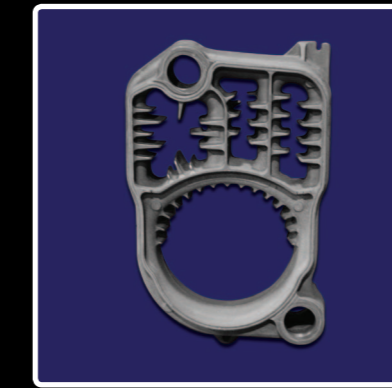
HYDRAULIC PARTS

Mastery in the thickness of the inside walls
Respect of the tightness of the assembled parts



CONSTRUCTION INDUSTRY MACHINES

New alloys, ductile cast iron, in accordance with specific requirements of the construction industry parts (strength, size, ...)



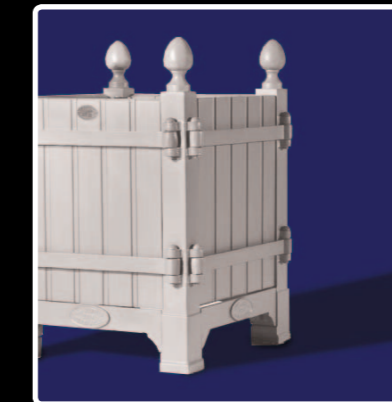
BOILER BODIES AND HEATERS

High infiltrated parts
Overmoulding technics
Fine and constant thickness
Hydrostatic pressure tests
Assembling



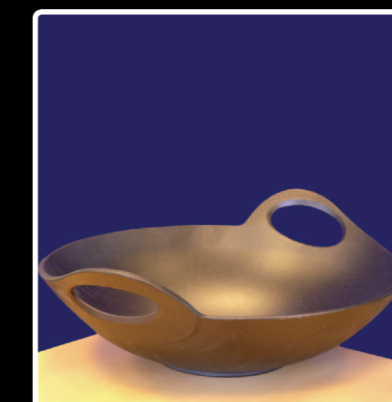
STOVES AND FIREPLACES

Free choice design
Assembling of finished or semi-finished products



OUTDOOR FURNITURE

Strength and durability of the materials
Large dimensioning up to 1800mm



COOKWARE

Grill, plancha, stewpots, griddles, woks
Alimentary use and high quality enameling
Flexible logistics adapted to the demand elasticity