



LAMIPRESS

Company Presentation 2022



Table of Contents

- p. 3 *About us*
- p. 4 *4.0 Industry*
- p. 5 *Departments*
- *R&D Design*
 - *Tooling*
 - *Production*
- p. 8 *Sectors and Products*
- p. 11 *Regional Projects and Calls*
- p. 14 *Partnerships*
- *Camser*
 - *Spinbow*
 - *mHealth Technologies*
 - *MIB 4.0 – Mechatronics in Bologna*
- p. 16 *Contacts*
- p. 17 *Website and Social Media*



ABOUT US

LAMIPRESS is a SME founded in 1979 in Bologna – under the name of Meccanica Stamper – by the Piccinini brothers. The core business is **cold stamping of sheet metal** (shearing and deep drawing) including **internal design and construction** of the **shearing dies**.

We have always focused on innovation and cutting-edge machinery: we are a 4.0 company that offers **mechanical components upon drawing** of the highest quality, guaranteed and certified, at competitive prices, thanks to our latest generation management software and our expert operators.

We supply companies and multinationals in different sectors, in Italy and abroad, that need **customized industrial series products**.

We offer a complete service thanks to the internal management of all industrial processes: from the design and construction of the die, continuing with production, up to the packaging of the finished piece including treatments.



4.0 INDUSTRY



Thanks to the **real-time connection** between the **machines** and the **MRP planning system**, we are able to **monitor the entire production cycle**, including the testing of inbound and

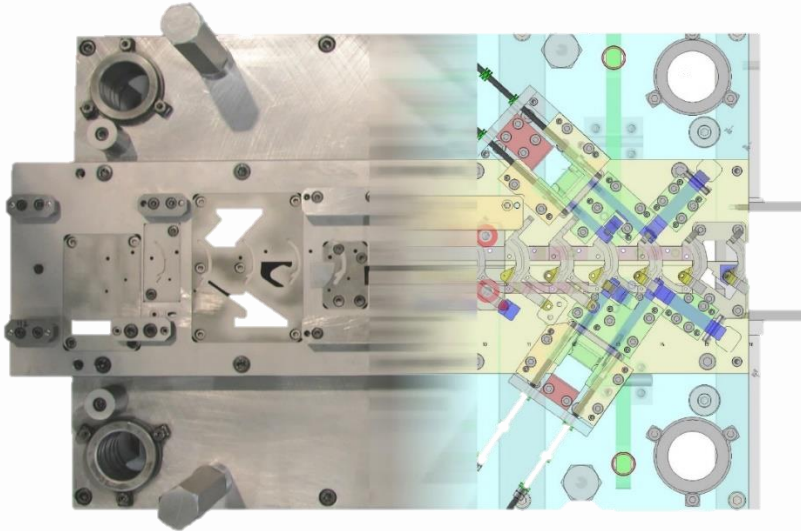
outbound material, as well as parts in production, which allows a drastic reduction in waste and non-conformity, thanks to the direct collaboration between operators, machines and testing and the reduction of human error.

- ✓ **Traceability** → Integrated batch traceability: raw material, single production stages, treatments, finished product
- ✓ **Testing** → The parts are systematically checked during all the individual stages with instruments directly linked to the company software (MRP), so that the measurement data are automatically saved and human error is avoided.



DEPARTMENTS

R&D Design



The **design of dies** and **automatic assembly machines**, as well as the mechanical design of innovative projects, is carried out entirely in-house by our technical department equipped with a 3D CAD system. We are able to acquire customer drawing files to speed up the design process; construction is entrusted to our tooling department.

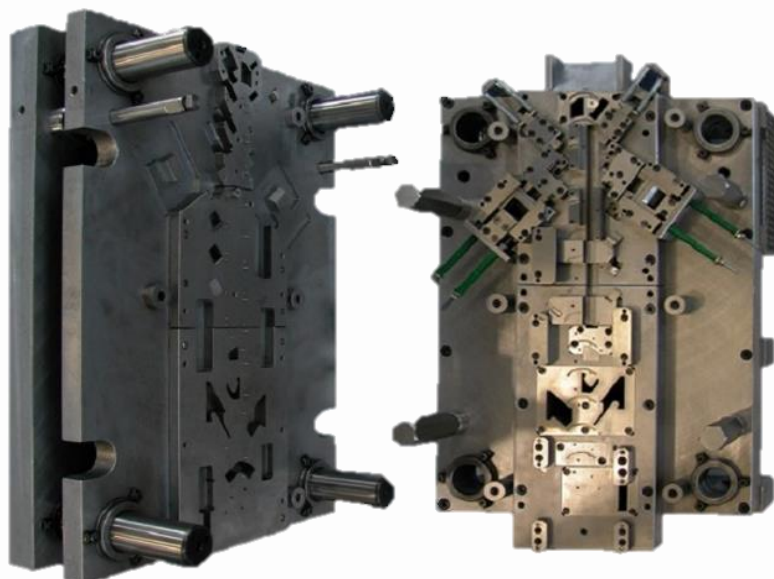


Tooling

The CAD-CAM link between the computers and the machines allows real-time dialogue between the programmer and the CNC machines in the toolroom.

In-house management of the life of the **die** – from design to construction and maintenance – allows us to reduce the time and costs that would occur on a subcontract basis.

In addition, our extensive experience in the field of dies allows us to offer free routine and extraordinary maintenance for the entire life of the product, which can be up to 35/40 years.





Production

	Sheared Parts Quantity (pcs)
2019	26.795.437
2020	28.281.819
2021	36.369.321

Every year we produce millions of **sheared and deep-drawn parts**, thanks to our extensive machine park, which includes presses from 15 to 400 tonnes.

Production batches range from 500 pieces, typical of the sampling and tooling set-up phase, to 500,000 pieces.

The real-time connection between the machines and the company's software allows us to monitor productivity and intervene quickly if necessary, reducing the reject rate to 0.01% without slowing down production times.





SECTORS AND PRODUCTS

Some **types of articles** currently produced by Lamipress are:

- Capacitor Covers
- Cut-off
- Diaphragms
- Fastons and Terminals
- Flanges
- Ignition Caps, Cages and Brackets
- Plates and Platens
- Plugs and Brackets
- Spacers
- U-Brackets
- Valves and Feet
- Washers

The main **target industries** for Lamipress products include:

- Agricultural Machinery
- Automotive
- Construction Industry
- Electromechanics
- Electronics
- Hydraulics and Pneumatics



Agricultural Machinery



Automotive



Construction Industry





Electromechanics



Electronics





REGIONAL PROJECTS AND CALLS

The experience in mechanical design gained in over 40 years of work has led the company to start collaborating with several **Italian universities** (Polytechnic of Milan POLIMI, University of Bologna UNIBO and University of Modena and Reggio Emilia UNIMORE) for the development of **innovative** regional, national and European research **projects** in various fields, such as process automation, robotics, electro-medical, nanotechnology, eHealth or systems for the production of nanofibres, for which we have received **regional grants**.

In 2008, together with two other SMEs, Lamipress founded **INNOVANET**, CNA Bologna's network of innovators, which has expanded to its current structure of 120 enterprises and nine clusters.

The partners of Lamipress also co-founded :

- Meccanica Stamper (1979)
- Consorzio S.L. Service (2000)
- Immobiliare Finsta (2009)
- Spinbow (2012)
- mHealth Techonolgies (2014)
- MIB 4.0 – Mechatronics in Bologna (2017)



from 2009...

- ✓ Emilia Romagna Region: P.O.R.FESR.2007-13 PRRITT Misure 3.1 Action A
- ✓ Partner ATI – 24 months
- ✓ Robotics project «Flexible system for non-contact dimensional inspection»
- ✓ Emilia Romagna Region «From Productive Districts to Technological Districts 2»
- ✓ Partner Company of Network MA.VI.BO. Project «3D Machine Vision»
- ✓ Lead Company of Network ROBOMA, project «Highly efficient robotic systems» – Electronics and precision mechanics district – 12 months
- ✓ Partner Company of Network ELFI, project «New technologies for the continuous production of nanofibrous membranes by electrospinning» → *This measure has favoured the creation of the high-tech start-up Spinbow*

(www.spinbow.it)  **SPINBOW™**
ELECTROSPINNING TECHNOLOGY

- ✓ Emilia Romagna Region «From Productive Districts to Technological Districts 2» – Biomedical and Prosthetics District – 12 months
- ✓ Partner Company of Network One4Fast, project «ONE-sensor system for Functional Assessment Screening Tool in physiotherapy». → *This project contributed to the creation of the technology start-up mHealth Technologies* (www.mHealthtechnologies.it) 



...to today

- ✓ Innovation Project: research and development activities to give the company a competitive advantage over its competitors and to exceed and anticipate customer expectations by providing products and services with high added value
- ✓ Lead Company of Enterprise Network MIB4 4.0 – Mechatronics in Bologna, project «Biomechanical Simulator» arising from the Call for Enterprise Networks. → This project contributed to the creation of the Network MIB 4.0 – Mechatronics in Bologna (www.mechatronicsinbo.com)





PARTNERSHIPS

In order to offer as complete a supply as possible, Lamipress cooperates with other complementary companies in the Emilia Romagna region



Process
Automation and
Robotics,
Electrospinning,
Electromedical



Laser cutting of tubes
and sheet metal, CNC
bending, robotic and
manual welding, CNC
machining, finishing,
partial pre-assembly



Mechanical
design, virtual
prototyping,
prototype
optimisation

Camser Subcontracting Division



In 2010 we joined the Camser consortium (www.camser.com) whose aim is to support members in continuous improvement in marketing, enabling lower business costs for the benefit of customers.

Camser offers a range of hundreds of Made in Italy mechanical products in compliance with quality standards. Camser offers support in internationalisation and promotes its member companies while ensuring that they work to the highest quality standards. All Camser member companies must therefore comply with ethical standards and state-of-the-art production models.

Lamipress is one of the companies selected by Camser and is an active member in the consortium.



Spinbow **SPINBOW**TM ELECTROSPINNING TECHNOLOGY

A high-tech start-up, Spinbow develops, produces and industrialises small and medium-sized equipment for the production of nano and/or microfibre membranes by electrospinning.
Lamipress carries out the mechanical design.

mHealth Technologies **mHT** mHealth Technologies

A spin-off from the university, mHT develops portable solutions for monitoring, evaluating and rehabilitating motor function.
Lamipress carries out the mechanical design of the equipment needed to calibrate the sensors used by the company.

MIB 4.0 - Mechatronics in Bologna 4.0



Lamipress is the leader of MIB4.0, a network of companies in Emilia Romagna offering qualified services in the design, prototyping, production and problem solving stages, following the Mass Customization philosophy.

The services offered are divided into:

CUSTOM AUTOMATION

Designing machines, lines
and solutions of automation

STANDARD MACHINES

- > for static and oligocyclic fatigue testing
- > for material testing
- > for calibration of sensors



CONTACTS



LAMI PRESS srl

Via I. Bandiera, 14/C

Zona artigianale Chiesa Nuova

40050 Monte San Pietro (BO) – Italy

VAT Nr. 01587651207

Chamber of Commerce (C.C.I.A.A.) 348472

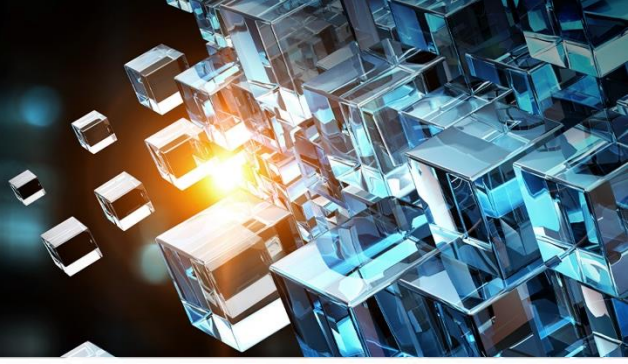
Phone. +39 051 969298

Fax. +39 051 969219

e-mail justsales@lamipress.it

web www.lamipress.it/en





FOR MORE INFO VISIT OUR WEBSITE
AND SOCIAL MEDIA

