

Bileşke

Makine Mühendislik

İmalat San. Ve Tic. Ltd. Şti.

CONTENT

0

ABOUT US

1

RANGE OF SERVICE

2

QUALITY

3

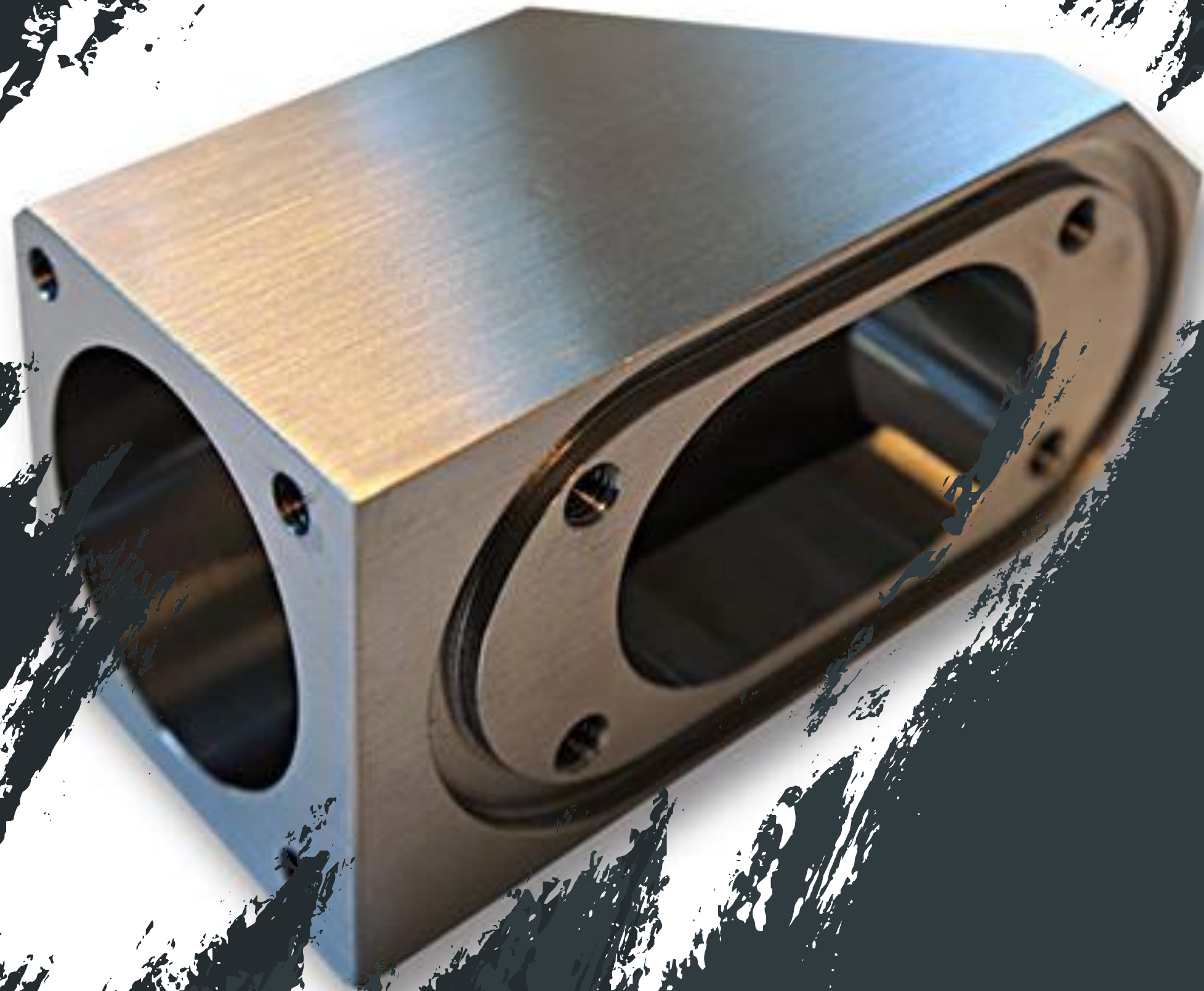
KEYWORDS

4

PRIORITY

5

CONTACTS



Chapter 0

ABOUT US

Bileşke Makine Mühendislik was founded in 2013 in Istanbul, Turkey

We are a manufacturing service provider for precision parts in the field machining technology and the associated services.

According to the customers requirements we will manufacture individual, prototype or series parts made of any material.

Our manufacture range differs from simple parts to complex assemblies. Our goal is to always work with the customers on projects quickly, precisely and efficiently.



**As we manufacture according to
ISO 9001: 2015, you can place
your order and be sure it will be
in good hands**

**The continuous training and education for our
employees and the cooperation with our
cooperation partners will guarantee customized
solutions for the customers requirements**

**The parts we produce are high quality products that
look nice on the surface as well without any kind of
burrs.**





Chapter 1

RANGE OF SERVICE



RANGE OF SERVICE

Our customers can count on the absolute precision and high quality of our individually customized products.

- **Production of turned parts from all common materials such as steel, stainless steel, brass, aluminum, plastic etc**
- **Production of grooves, internal gears**
- **With our machining centers we provide in the area milling; both customer-specific individual parts as well as small, medium and large series.**

**Adherence to deadlines
and compliance of the
cost factor is for us a
matter of course.**

- Drilling and threading on turning-, milling-, stamped- and formed parts, cast and forgings
- Production according to drawing, delivered Files, samples and freehand sketches
- Manufacture of assemblies
- Creation of individual pieces, Custom-made products and series



QUALITY

Chapter 2

QUALITY & CERTIFICATION

We pay attention to the quality of the parts as well as to meet the highest quality standards visually in addition to the strict compliance with the dimensions and tolerances.

We ensure this by consistently optimizing the processes and having permanent quality controls.

Increasing Quality requirements require the testing of all products for your individual specifications.

Certification according to **ISO 9001** documents our high quality awareness

"Quality is the opposite of chance"

- Our thorough cleaning of the products, our exact piece counting, our careful packaging and our selection of reliable carriers are an important part of our production process.





Chapter 3
KEYWORDS

5 KEYWORDS

Quality

Precision

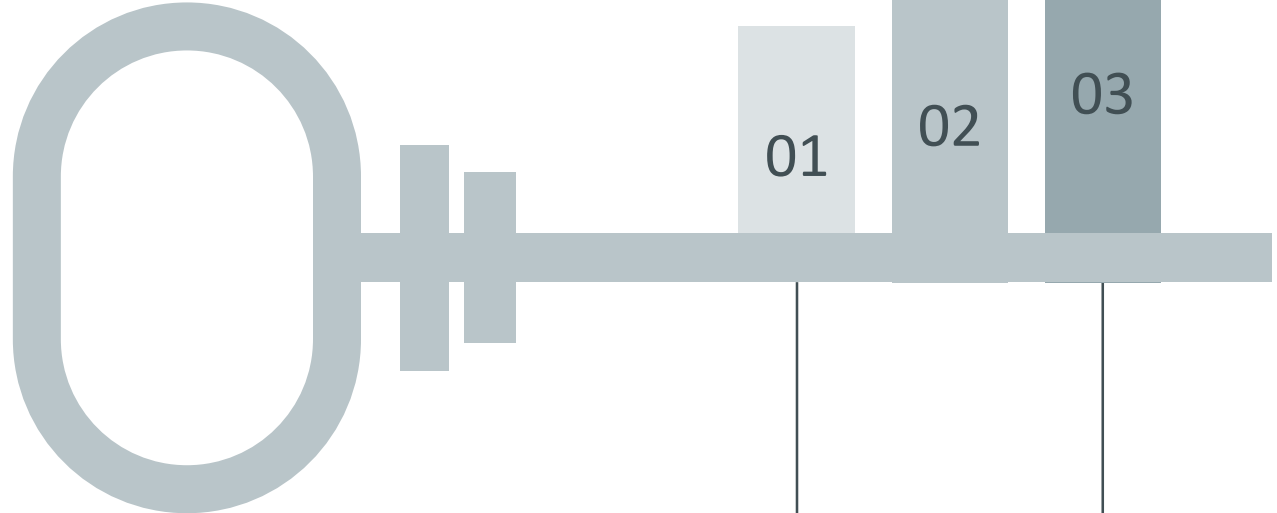
Flexibility

Customer

Punctuality

The quality of our products and services are the result of our philosophy made out of these important words.

3 IMPORTANT KEYWORDS



PRECISION

Our high [quality machines](#) and [qualified employees](#) results in our reliability and precision

QUALITY

Our customers can rely on the absolute [precision](#) and high [quality](#) of our individually customized products.

PUNCTUALITY

[Adherence to deadlines](#) and compliance with the cost factor are a [matter of course](#) for us. Our customers have been absolutely [satisfied](#) with this for years



Chapter 4

PRIORITY



CUSTOMER SATISFACTION

Our clients include the most diverse Industries with a wide variety of requirements.

Our strength is flexibility while maintaining the needed precision.

Our employees mainly manufacture individual parts and series, especially according to your wishes and drawings.

You decide the product and give us information, we take care of the rest

We also take interdisciplinary work and organize the process - always under consideration of a healthy relationship between quality, price and deadline specifications

PRODUCTION

You determine, we manufacture

Very complicated or very simple, in large or small series

We also manufacture individual pieces

You tell us what you need, we deliver it with precision.



THE FUTURE
STARTS TODAY,
NOT TOMORROW.

CONTACTS

Bileşke Makine
Mühendislik
İmalat San. Ve
Tic. Ltd. Şti

Tel-Nr.- +90 554 189 65 08

E-Mail- info@bileskemakine.com

www.bileskemakine.com

Deri OSB Aritma Caddesi Dilek Sokak No 4
34956-Tuzla – Istanbul – Turkey

The background features three overlapping teal circles of varying shades, centered horizontally. The top half of the image is a dark teal color, and the bottom half is a lighter teal color. A white horizontal band runs across the middle, containing the text.

THANK YOU!