

HEWI

Company

**BEST OF
DECADE**
 universal
design
company



HEWI

Location

Company

Founded in 1929 by Heinrich Wilke, HEWI is based in Bad Arolsen in northern Hessen, employs 550 people, and has a production area of 46,000 m².



HEWI

Company

Sanitary division

System solutions for washbasins, WCs and showers – outstanding design combined with maximum functionality.



Company

Fittings division

HEWI fittings - Architectural clarity in its beautiful form.

HEWI

KUNSTSTOFFTECHNIK

OEM

Plastics Technology Business Unit



HEWI

OEM

Plastics Technology

Business Unit
Nobilia | Audi | BMW | Ford | GM |
Mercedes Benz | Porsche | Volvo

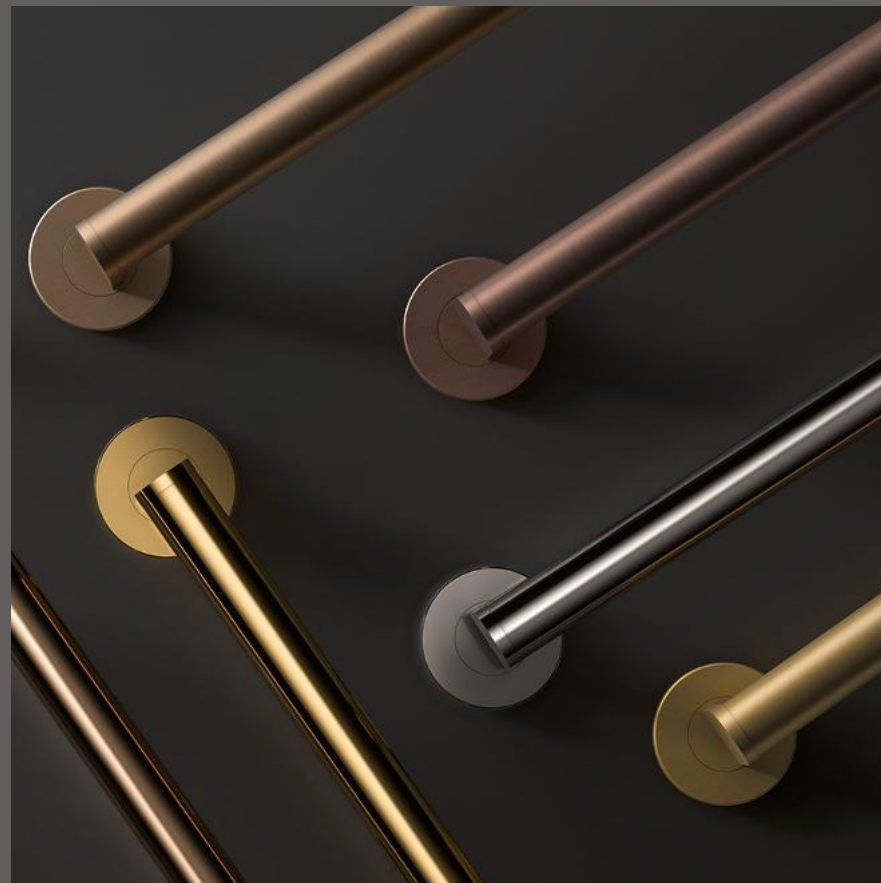


HEWI

Elegance meets
durability

PVD by HEWI

PVD surfaces from HEWI combine exceptional durability with elegant aesthetics. They create a design that makes durability and luxury tangible. This is where the highest quality meets a genuine passion for perfection - Made in Germany.



Made in Germany

PVD by HEWI

Our PVD surfaces combine brilliant colors with technical excellence, offering outstanding scratch resistance and hardness. Available in four standard and eight custom colors – ideal for hotels, prestigious public spaces, and premium healthcare environments.

Standardfarben:



Messing
glänzend

Messing
gebürstet

Nickel
gebürstet

Schwarzchrom
glänzend

Sonderfarben:



Nickel
glänzend

Schwarzchrom
gebürstet

Kupfer
glänzend

Kupfer
gebürstet

Bronze
glänzend

Bronze
gebürstet

Gold
glänzend

Gold
gebürstet



Oberfläche: Messing gebürstet

A photograph of a modern industrial factory floor. In the foreground, a white robotic arm is positioned over a work area. To the left, there is a large, complex piece of machinery with various cables (red, blue, green) connected to it. The background shows a well-lit factory interior with overhead pipes, structural beams, and safety railings. The overall scene depicts a high-tech manufacturing environment.

HEWI

OEM

Plastics Technology Business Unit

Nobilia | Nolte | SATA | HETTICH | SIRONA |
Audi | BMW | Ford | GM | Mercedes Benz | Porsche
| Volvo

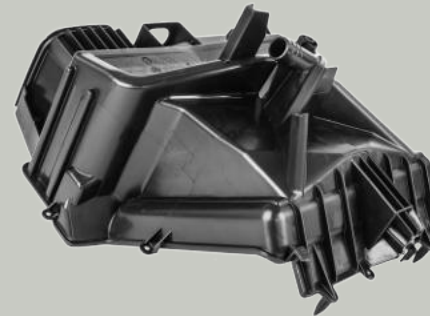
Expertise Plastic injection molding

- Over 70 injection molding machines
- 35 t - 1,600 t clamping force
- Shot weight from 0.1 g to 5,000 g
- Multi-component molding processes
- Small and large series production
- High-gloss, colored surfaces
- Insert / outsert technology
- In-mold labeling (IML)
- GID process (Gas Injection Molding)
- Surface finishing

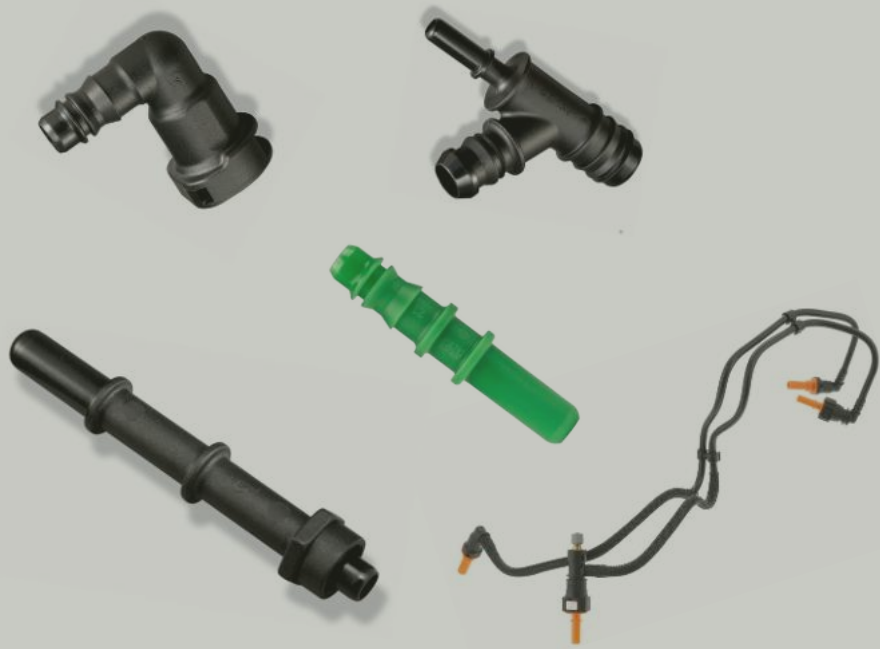


MAHLE

Components for
automotive air
conditioning systems



 **TI Automotive**
Fuel delivery systems

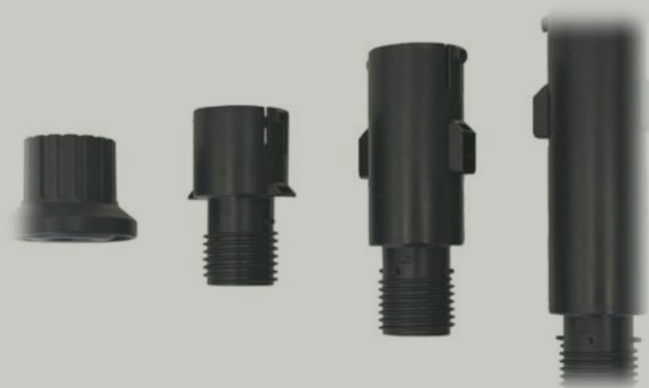


HEWI

KUNSTSTOFFTECHNIK

nobilia[®]

Furniture foot system





FurnSpin Technology Drawer slide and soft-close systems

HEWI

KUNSTSTOFFTECHNIK



FURNSPIN

Zwei Möbel in einem? Geht! Ein einfacher Dreh genügt und schon wird aus der geschlossenen Front ein offenes Regal. Mit dem innovativen Dreh-Schwenk-System FurnSpin lassen sich selbst raumhohe Möbelkorpusse elegant drehen.

→ FurnSpin



interzum

AWARD
Best of the Best

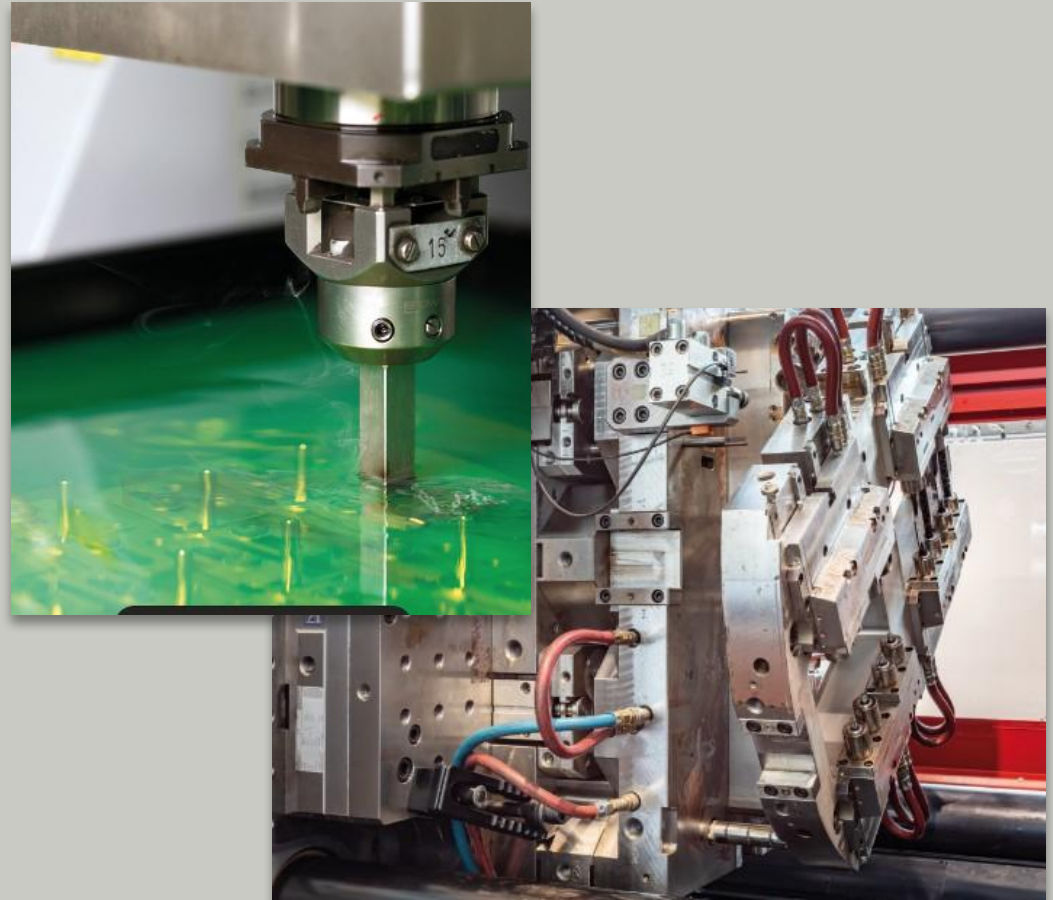


Coating spray guns and paint cups



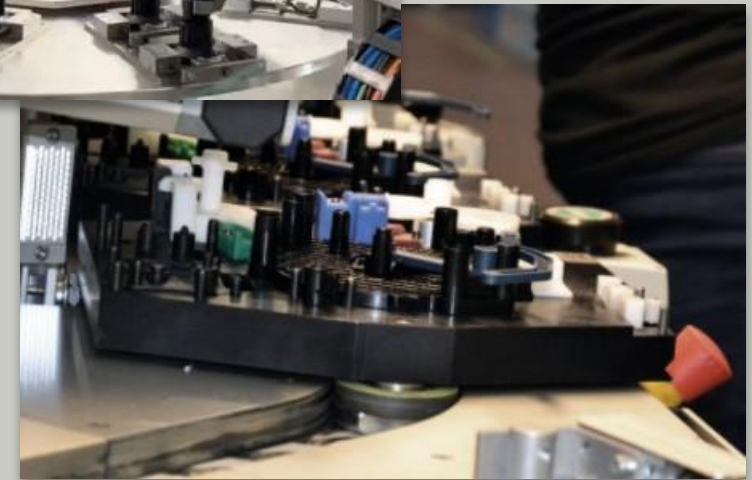
Expertise Toolmaking

- Manufacture of new injection molds
- Maintenance, repair, and optimization of injection molds
- 5-axis CNC milling
- Wire EDM and sinker EDM
- Wire cutting
- Deep-hole drilling
- Surface and cylindrical grinding
- Turning, spotting, and polishing
- Design and engineering (CAD, CAM)



Expertise Module assembly

- Semi- and fully automated subassembly assembly
- Mechanical and technical subassemblies
- Screwing, joining, and press-fitting
- Process- and cost-optimized
- 100% inspection / 100% quality control



Expertise

HEWI

KUNSTSTOFFTECHNIK



QUALITY AND SUSTAINABILITY

- In-house measurement and testing laboratory (EMPB, VDA Volume 2, PPAP)
- Optical 3D coordinate measurement (tactile and digital)
- Tensile and impact testing
- Temperature and climate testing
- Certifications:
- DIN EN ISO 9001
- DIN EN ISO 14001
- DIN EN ISO 50001
- DIN EN ISO 45001



WAREHOUSING AND LOGISTICS

- Internal warehouse space of over 4,000 m²
- Consignment warehouse
- Kanban system
- Worldwide shipping
- Packaging and transport using single-use and returnable systems
- Barcode and/or VDA labeling for sustainable production and shipment traceability

HEWI

Company

Sustainability and climate protection



Sustainability in figures

Climate neutrality by 2030



DIN EN ISO 50001 und DIN EN ISO 14001
Paris Climate Agreement – 1.5°C target

E-mobility in the vehicle fleet



Company car policy

In-house energy generation through photovoltaics



Green electricity

CO₂-free electricity supply



Recycling of packaging materials

New packaging line

Product innovations with Recyclat

References

HEWI

KUNSTSTOFFTECHNIK

MAHLE

Driven by performance

nobilia[®]

Miele

Continental 
CONTITECH

nolte

CABKA  **IPS**

better pallets

Hettich 

Technik für Möbel



KONGSBERG
AUTOMOTIVE



möllergroup



TI Automotive

Valeo



SATA

German Engineering