



DURITCAST

Your partner for steel and iron technical castings.

**ONE-STOP
SHOP**

**ENGINEERING &
CO-DESIGN**

**TRIALS &
PRE-SERIES**

DURITCAST S.A. – CAST IRON AND STEEL CASTING [2008-2018]



- Duritcast was born from the fusion of Fusag and Alba, inheriting from the latter almost 100 years of foundry experience
- Since 2008 integrated in the international group DURIT, specialist in hard metal and wear tools, with production centers in Europe and South America
- It has a team of 135 people, including 10 employees with training in metallurgical engineering and / or materials
- Able to produce small or medium series
- Production capacity of up to 11000 tons / year

DURIT Portugal | DURIT Espanha | DURIT Brasil | DURIT Hartmetall

MoldIT | TeandM | Vitricer | Helitene | DUROMIN | DURITCAST



Tungsten carbide



Castings



High-performance
Ceramics



PVD Coatings



Thermal Spray
Coatings

Get to know more @ <http://www.durit-gruppe.de/en-us>





QUALITY

We have certified laboratories, procedures and technicians that perform all relevant inspections, tests and documentation.

- ✓ Laboratory of sand control
- ✓ Spectrometer
- ✓ Thermal analysis (OCC)
- ✓ LECO
- ✓ Hardness Testing
- ✓ Ultrasonic Equipment
- ✓ Phased Array
- ✓ Endoscopy
- ✓ Mechanical tests
- ✓ Magnetoscopy
- ✓ Three-dimensional control (FARO)

CERTIFICAÇÕES

ISO 9001:2015 / Pressure Equipment Directive 97/23/EC/PED

Cast Iron: ABS / BV / DNV / LR

Poured Steel: ABS / BV / DNV / LR

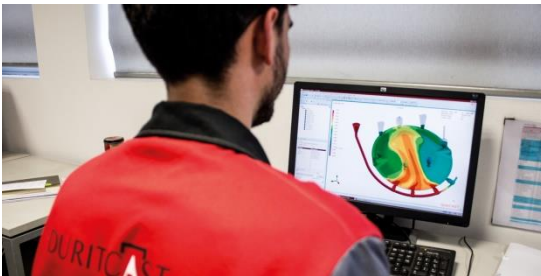




ENGINEERING

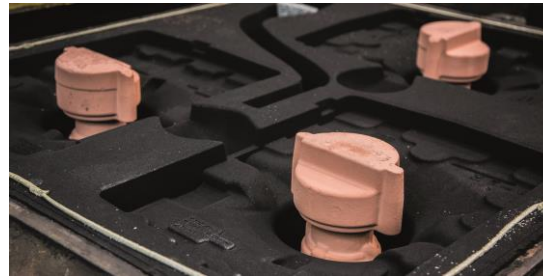
CO-DESIGN

- Product study - drawing
- Process study
- Simulation Study
- Study of tools



INDUSTRIALIZATION

- Production flowchart
- Control plan
- Tool tuning
- Initial Samples



TOOLING

- Inner carpentry for wood and resin patterns
- Robot for machining of polystyrene patterns
- Subcontracting of metal patterns, wood or resin



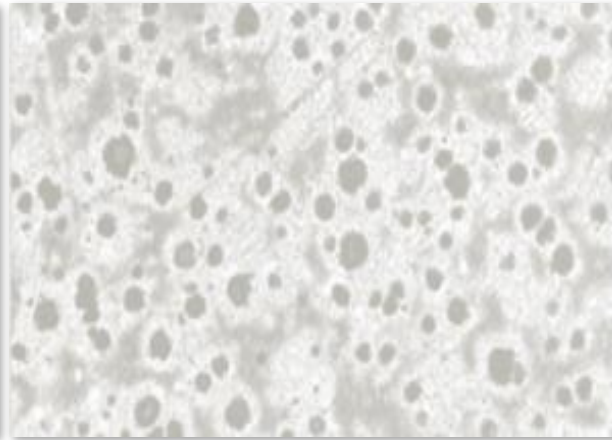


To guarantee the quality of the cast materials, all raw materials, always from approved suppliers, are controlled upon arrival. Some of the alloys we produce are:



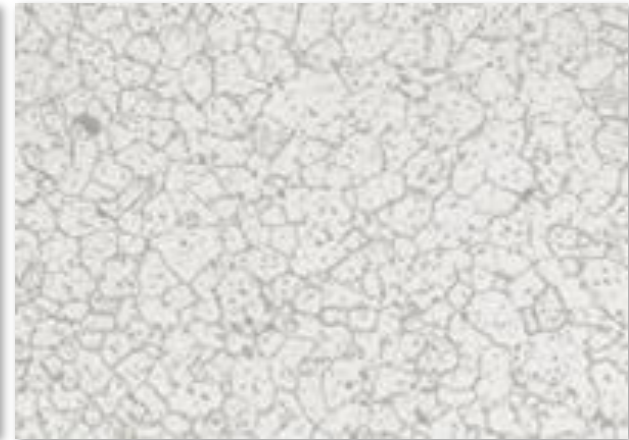
Grey Iron

EN-GJL-200
EN-GJL-250
EN-GJL-300



Spheroidal or Nodular Iron

EN-GJS-400.15
EN-GJS-400.18
EN-GJS-500.7
EN-GJS-600.3
EN-GJS-700.2



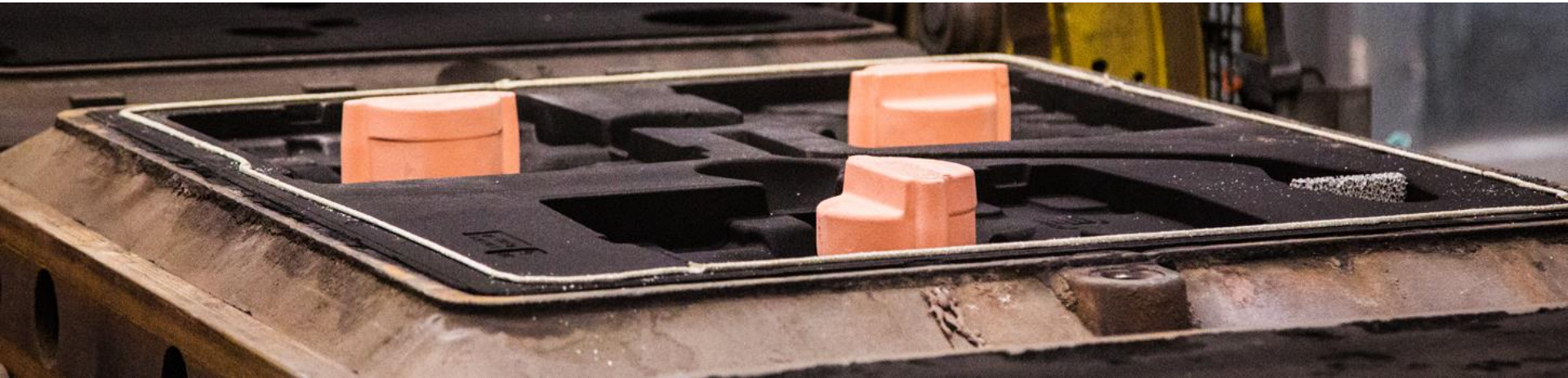
Carbon steels and low alloys(examples)

WCB/ WCC/ GS38/ GS45/ GS52/
GS60/ GS70/ GS20Mn5/ GS21Mn5/
GS25CrMo4/ GS30Mn5

Stainless steel

CF3(M)/ CF8(M)/ CD3Mn





3 MOLDING LINES WITH PARTS PRODUCTION CAPACITY BETWEEN 5 TO 6000 KG

AUTOMATIC MOLDING+GF+	MANUAL MOLDING OMEGA	SEMI-AUTOMATIC MOLDING SOGEMI
<p>Weight per piece between 5 and 150kg</p> <p>Molding box 1100x950x250/250mm</p>	<p>Weight per piece between 120 and 6000 kg</p> <p>Molding box Up to 3500x3500 mm</p>	<p>Peso por peça entre 5 a 200 kg</p> <p>Molding box 1100x1000x400/400mm</p>

4 ABB + INSERTEC induction furnaces

- Grey iron up to 6000 kg
- Spheroidal iron up to 4000 kg
- Steel up to 3000 kg
- Stainless steel up to 500 kg



A216W0B

THERMAL TREATMENTS

Normalization
Relief of tensions
Annealing
Quenching and Tempering
Austenitization



MACHINING



Wide network of partners at national level
with capacity for single piece machining, small
and medium series.

SURFACE TREATMENTS

Through TeandM, we present solutions such
as:
high-speed thermal projection (Plasma, HVOF,
EAWS)
Physical coatings in vapor state (PVD, PA-CVD)





MAIN BUSINESS AREAS

PUMPS AND
VALVES

CONSTRUCTION
OF MACHINES

ENERGY

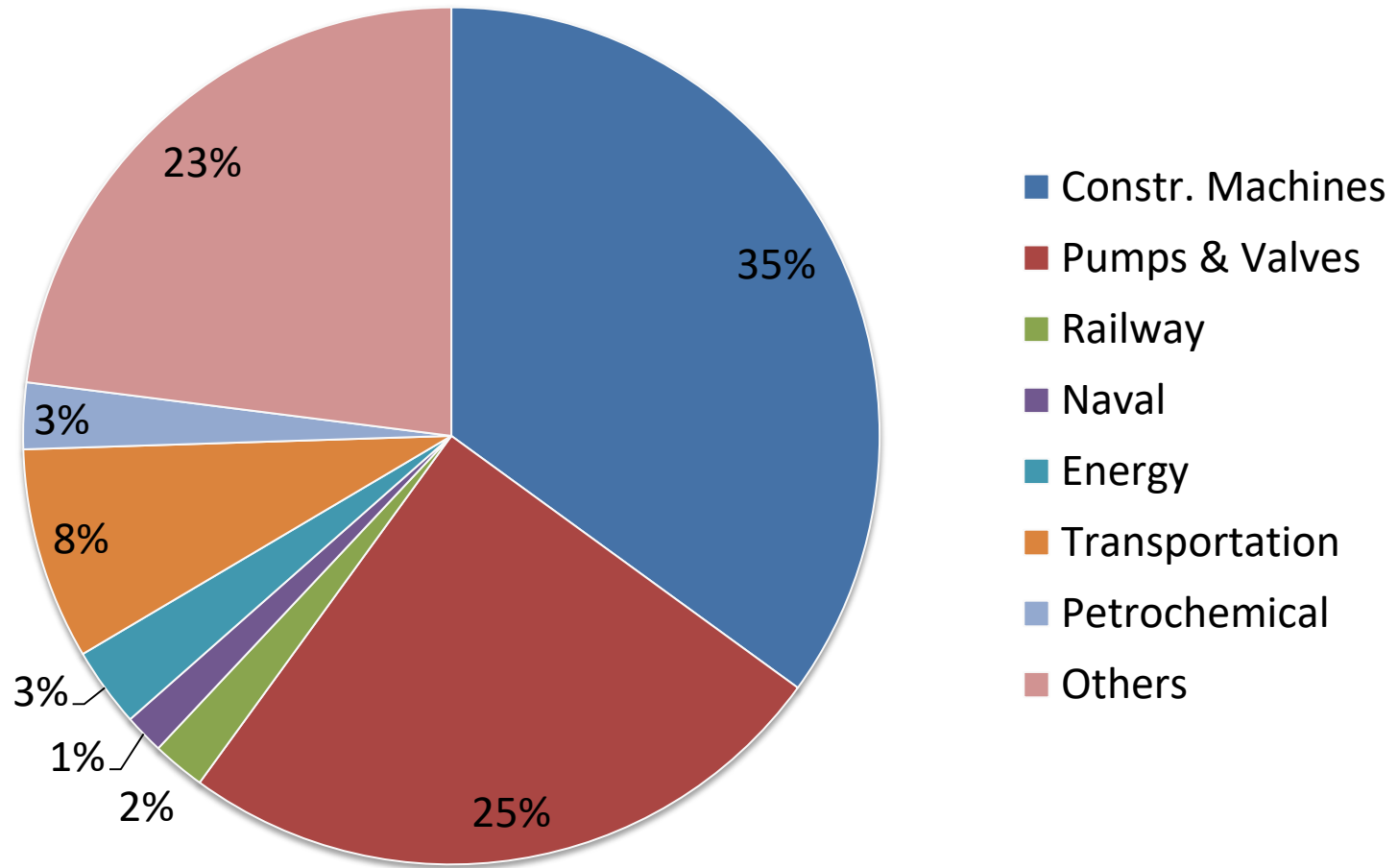
RAILWAY

TRANSPORTATION

NAVAL



Sales by industrial activity





Address:

Rua Vale do Salgueiró, 1044
Raso do Salgueiró
ZI EN1 Norte
3750-753 Travassô
Águeda – PORTUGAL

T.: +351 234 610 500

F.: +351 234 623 286

E.: comercial@duritcast.pt

W.: www.duritcast.pt

ISO 9001
BUREAU VERITAS
Certification

