



INVAYEAR



# Brass Precision Components

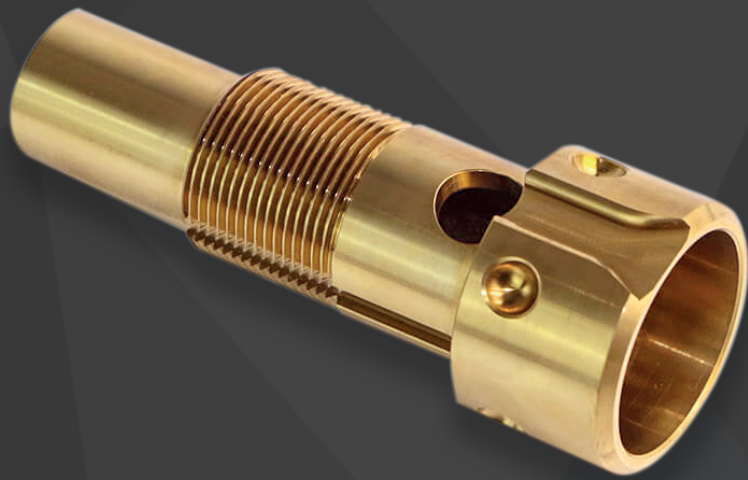
# Timeless Products With A Fine Regard For Detail.

We are a manufacturer and exporter of Brass Precision Components and Precision Parts. Our components are highly sought after in the market due to their superior dimensional accuracy, sturdiness, durability, and corrosion resistance. All of these precision components are made of high-quality materials and have extremely precise dimensions. We can also create custom precision components to meet the needs and specifications of our customers.

Invayear always offers our customers worldwide quality approved precision parts. We ensure that our brass precision components are rigorously tested before final delivery to clients. They are available in a variety of quality grades to meet the needs of customers.

# Products

1. Brass CNC Turned Parts .....	<b>1</b>
2. Brass Threaded Inserts .....	<b>3</b>
3. Brass Hexagonal Nut .....	<b>5</b>
4. Brass Flare Fitting .....	<b>7</b>
5. Brass Compression Fitting .....	<b>9</b>
6. Brass Hose Nipple .....	<b>11</b>
7. Brass Refrigeration Access Valve .....	<b>13</b>
8. Brass Refrigeration Adaptor .....	<b>15</b>
9. Split Lock Valve .....	<b>17</b>
10. Split AC Valve .....	<b>19</b>
11. Brass Pipe Fitting .....	<b>21</b>
12. Brass Terminal Blocks .....	<b>23</b>
13. Brass Neutral Links .....	<b>25</b>
14. Brass Ball Valve .....	<b>27</b>
15. Brass Brake Line Fitting .....	<b>29</b>
16. Brass Swing Check Valve .....	<b>31</b>
17. Brass Flanges .....	<b>33</b>
18. Brass PVC Fitting .....	<b>35</b>
19. Brass Flare Nut .....	<b>37</b>
20. Brass Spacers .....	<b>39</b>



# Brass CNC Turned Parts

1001

We manufacture CNC-turned brass components with the highest quality precision. We offer the highest standards and our services include VMC TMC HMC CNC Machining, Milling, Drilling, Turning, Lathe, Grinding, Turned part milling Production of precision turned parts from a wide range of materials. We can work with materials like brass, copper, aluminum, and many others steel.



## Threads

-> ISO Metric (MM) / BA / BSW / BSP / BSPT / BSF / BSB / UNC / UNF / UNEF / NPT / NPS / Specified Threads any threads as per client specification.

# Brass CNC Turned Parts

## Material :

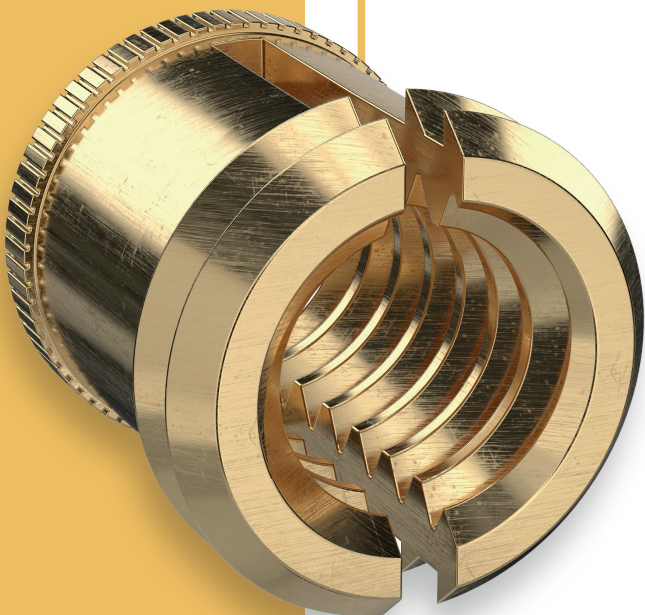
- > **Brass Alloy:** CuZn39Pb3 / CuZn39Pb2 / CuZn38Pb1.5 / CuZn37Pb2 / CuZn40Pb2 / MS 58 / BS2874 / IS 319 (Type I & II)
- > **UNS (ASTM):** C35300 / C35330 DZR / C36000 (CDA 360) / C36500 / C37000 / C37100 / C37700 / C37710 / C38500
- > **BS:** CZ121 / CZ122 / CZ124 / CZ128 / CZ 131 / CZ132
- > **EN:** CW602N / CW603N / CW606N / CW608N / CW612N / CW614N / CW617N
- > **JIS:** C3601 / C3602 / C3603 / C3604 / C3605 / C3712 / C3771

## Finish & Coating :

- > Natural Clean / Nickel Plated / Electro-Tin Plated / Silver Plated / Copper Plated / Zinc Plated / Chrome Plated / Specified Surface Finish.

## Features :

- > Ideal for highly customized Precision components.
- > Provides a high-quality surface finish.
- > Complex parts can be made effectively.
- > Accuracy of 10 to 20 microns can be achieved with high precision.

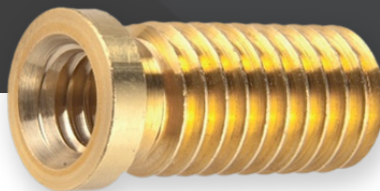
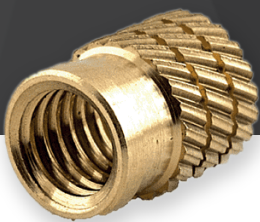




# Brass Threaded Inserts

1002

To deliver the best quality brass inserts, we have an experienced team as well as advanced machine production equipment and technologies. Brass threaded inserts for wood, plastic injection molding, electronics, the automotive industry, and laptop computers. We provide a comprehensive choice of brass inserts for all installation methods, including thermal, press, heat, and mold. There are two types of brass inserts: unidirectional knurling diamond and straight.



## Threads :

-> ISO Metric (MM) / BA / BSW / BSP / BSPT / BSF / BSB / UNC / UNF / UNEF / NPT / NPS.

# Brass Threaded Inserts

## Product Range :

- > Brass Threaded Inserts
- > Brass Knurled Inserts
- > Brass Hexagonal Inserts
- > Brass Square Inserts
- > Brass Molded-in Inserts
- > Brass Inserts with collars
- > Brass Press-in Inserts
- > Brass Ultrasonic Insert
- > Brass Double Knurling Insert
- > Brass Thread Cutting insert

## Material :

- > **Brass Alloy:** CuZn39Pb3 / CuZn39Pb2 / CuZn38Pb1.5 / CuZn37Pb2 / CuZn40Pb2 / MS 58 / BS2874 / IS 319 (Type I & II)
- > **UNS (ASTM):** C35300 / C35330 DZR / C36000 (CDA 360) / C36500 / C37000 / C37100 / C37700 / C37710 / C38500
- > **BS:** CZ121 / CZ122 / CZ124 / CZ128 / CZ 131 / CZ132
- > **EN:** CW602N / CW603N / CW606N / CW608N / CW612N / CW614N / CW617N
- > **JIS:** C3601 / C3602 / C3603 / C3604 / C3605 / C3712 / C3771

## Size :

- > M2 to M30 and up to M36, and 1/8", 5/32", 3/16", 1/4", 5/16", 3/8", 1/2", 3/4", 1", 1-1/2", 2" and as per Custom Designs and requirements

## Knurling :

- > Straight -> Diamond -> Unidirectional -> Both Blind and through inserts

## Finish & Coating :

- > Natural Clean / Nickel Plated / Electro-Tin Plated / Silver Plated / Copper Plated / Zinc Plated / Chrome Plated.

## Application :

- > Plastic molding injection, Automobile, Wood, Laptop, Telecommunications and Instrumentation.

## Highlights :

- > The length of the insert is important for proper closing of molding die. We maintain the length of such inserts within tolerance of -0.005 mm.
- > Diamond, Straight, Opposite diagonal, etc are the knurling options available to give solid gripping to molding.



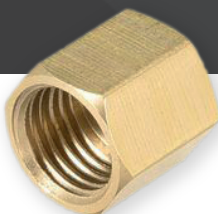
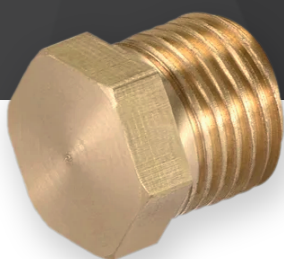


# Brass Hexagonal Nut

1003

To produce the top-grade brass nut, we have an experienced team and advanced machine production tools technology.

We specialize in producing and exporting high-quality Nuts such as Brass Check Nut, Brass Lock Nut, Brass Flange Nut, Brass Hex Nut, Brass Collar Nut, Brass Jam Nut, Brass Wing Nut, Brass Thin Nut, Brass Slotted Nut, Brass Round Nut, and so on.



## Threads :

-> ISO Metric (MM) / BA / BSW / BSP / BSPT / BSF / BSB / UNC / UNF / UNEF / NPT / NPS.

# Brass Hexagonal Nut

## Product Range :

- > Brass Check Nut
- > Brass Lock Nut
- > Brass Rivet Nut
- > Brass Thin Nut
- > Brass Jam Nut
- > Brass Slotted Nut
- > Brass Square Nut
- > Brass Wing Nut
- > Brass Flange Nut
- > Brass Hex Nut
- > Brass Round Nut
- > Brass Split Nut

## Material :

- > **Brass Alloy:** CuZn39Pb3 / CuZn39Pb2 / CuZn38Pb1.5 / CuZn37Pb2 / CuZn40Pb2 / MS 58 / BS2874 / IS 319 (Type I & II)
- > **UNS (ASTM):** C35300 / C35330 DZR / C36000 (CDA 360) / C36500 / C37000 / C37100 / C37700 / C37710 / C38500
- > **BS:** CZ121 / CZ122 / CZ124 / CZ128 / CZ 131 / CZ132
- > **EN:** CW602N / CW603N / CW606N / CW608N / CW612N / CW614N / CW617N
- > **JIS:** C3601 / C3602 / C3603 / C3604 / C3605 / C3712 / C3771

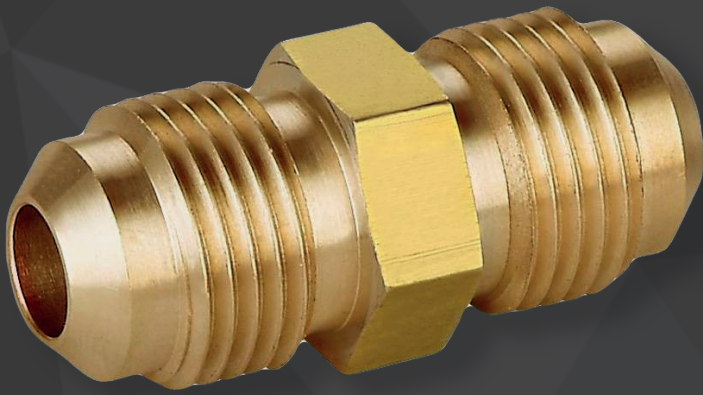
## Size :

- > Sizes available from M2 to M30 and up to M36, and 1/8", 5/32", 3/16", 1/4", 5/16", 3/8", 1/2", 3/4", 1", 1-1/2", 2" ans as per Custom Designs and requirements.

## Finish & Coating :

- > Natural Clean / Nickel Plated / Electro-Tin Plated / Silver Plated / Copper Plated / Zinc Plated / Chrome Plated.



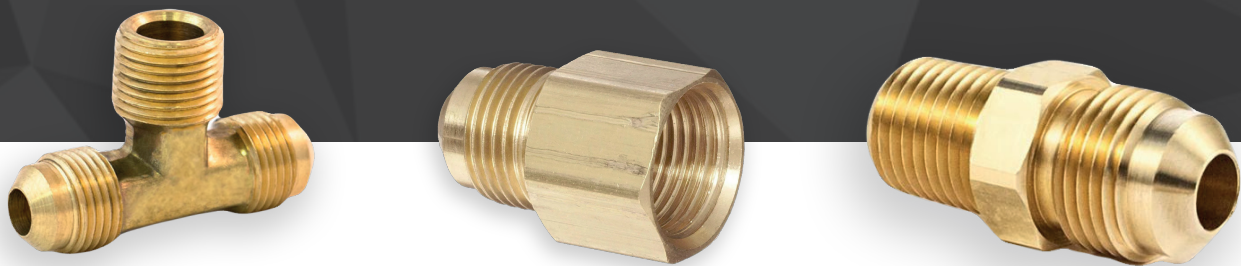


# Brass Flare Fitting

1004

Brass Flare Fittings are a form of compression fitting that is typically used with copper tubing. Tube flaring is a cold working method that is considered a form of forging operation. A flare nut is used to connect the flared tubing's tapered end to the similarly tapered fitting during assembly, resulting in a pressure-resistant, leak-tight seal.

Flared connections are frequently utilized in mission-critical and inaccessible places because they provide a high level of long-term stability. Flare fittings can withstand higher pressures and have a broader working range than normal compression fittings.



## Threads :

-> ISO Metric (MM) / BA / BSW / BSP / BSPT / BSF / BSB / UNC / UNF / UNEF / NPT / NPS.

# Brass Flare Fitting

## Product Range :

- > Brass Double End Flare Elbow
- > Brass Reducing Flare Elbow
- > Brass Half Flare Elbow
- > Brass Half Flare Tee
- > Brass Hex Flare Nuts
- > Brass Flare Elbow
- > Brass Flare Tee
- > Brass Flare Adapter
- > Brass Cylinder Adaptor
- > Brass Flare Double End Flare Union
- > Brass Reducing Flare Union
- > Brass Half Flare Union
- > Brass Flare Seal Plug
- > Brass Split Valve Flare Nut
- > Brass Long Neck Flare Nut
- > Brass Short Neck Flare Nut
- > Brass Dead Cap Nut
- > Brass Reducing Flare Nut

## Material :

- > **Brass Alloy:** CuZn39Pb3 / CuZn39Pb2 / CuZn38Pb1.5 / CuZn37Pb2 / CuZn40Pb2 / MS 58 / BS2874 / IS 319 (Type I & II)
- > **UNS (ASTM):** C35300 / C35330 DZR / C36000 (CDA 360) / C36500 / C37000 / C37100 / C37700 / C37710 / C38500
- > **BS:** CZ121 / CZ122 / CZ124 / CZ128 / CZ 131 / CZ132
- > **EN:** CW602N / CW603N / CW606N / CW608N / CW612N / CW614N / CW617N
- > **JIS:** C3601 / C3602 / C3603 / C3604 / C3605 / C3712 / C3771

## Size :

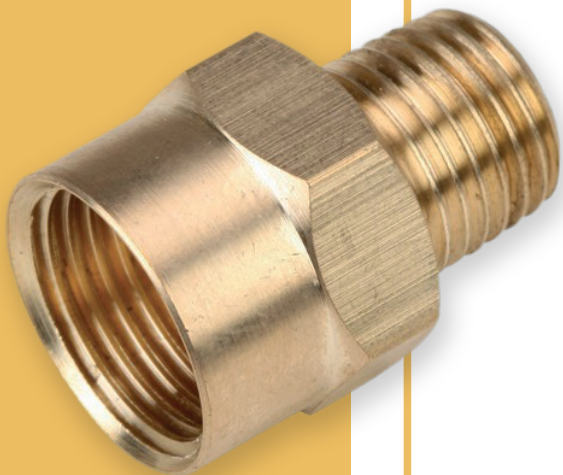
- > Sizes available from 1/4 3/8 1/2 5/8 3/4 5/16 7/8 and as per Custom Designs and requirements.

## Finish & Coating :

- > Natural Clean / Nickel Plated / Electro-Tin Plated / Silver Plated / Copper Plated / Zinc Plated / Chrome Plated.

## Highlights :

- > These moderate fittings can withstand mechanical withdrawal and be dismantled several times.
- > Long dry seal pipe thread (Important: absolutely in ACCORDANCE WITH THE STANDARDS) reduces leakage and allows for additional flare nut tightening clearance.
- > It can be reassembled and dismantled several times.
- > Void forms, elbows, tees, and so on.... To reduce strength and remove fractures, it's made from brass forgings.
- > Applications include combustible liquids, marine and refrigeration, air conditioning, copper pipe fittings, and gas.

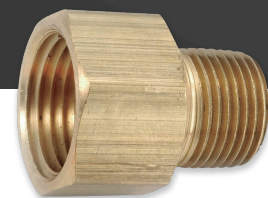
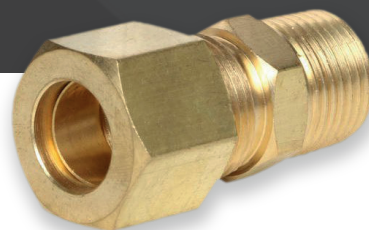
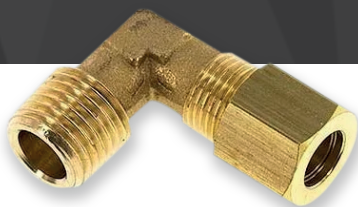




# Brass Compression Fitting

1005

Compression of Brass Copper tube fittings (Ferrule fitting) is used in plumbing to connect two tubes or thin-walled pipes. When two pipes of different materials (most typically PVC and copper) are to be connected, the fittings will be built of one or more suitable materials appropriate for the connection. Compression fittings are also commonly used for hot and cold water faucets (taps), as they allow for quick detachment and reconnection. They are utilized because they may offer leak-tight seals. These fittings are re-usable.



## Threads :

-> ISO Metric (MM) / BA / BSW / BSP / BSPT / BSF / BSB / UNC / UNF / UNEF / NPT / NPS.

# Brass Compression Fitting

## Product Range :

- > Brass Male Female Thread Elbow
- > Brass Reducing Elbow
- > Brass Connector
- > Brass Four Way Cross
- > Brass olive Tee
- > Brass Adapter
- > Brass Hex Nipple
- > Brass Union

## Material :

- > **Brass Alloy:** CuZn39Pb3 / CuZn39Pb2 / CuZn38Pb1.5 / CuZn37Pb2 / CuZn40Pb2 / MS 58 / BS2874 / IS 319 (Type I & II)
- > **UNS (ASTM):** C35300 / C35330 DZR / C36000 (CDA 360) / C36500 / C37000 / C37100 / C37700 / C37710 / C38500
- > **BS:** CZ121 / CZ122 / CZ124 / CZ128 / CZ 131 / CZ132
- > **EN:** CW602N / CW603N / CW606N / CW608N / CW612N / CW614N / CW617N
- > **JIS:** C3601 / C3602 / C3603 / C3604 / C3605 / C3712 / C3771

## Size :

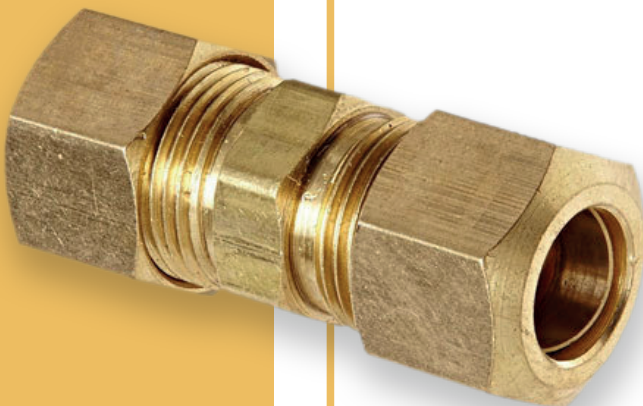
- > Sizes range from 1/4 3/8 to 1/2 5/8 to 3/4 5/16 7/8 and might even be customised to meet your requirements.

## Finish & Coating :

- > Natural Clean / Nickel Plated / Electro-Tin Plated / Silver Plated / Copper Plated / Zinc Plated / Chrome Plated

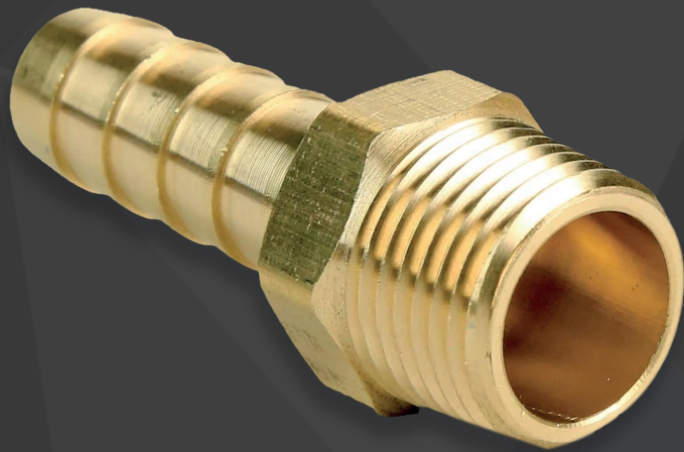
## Function :

- > Gas, Water supply system, Solar thermal.



## Highlights :

- > Extensive Versatility.
- > Durability.
- > Corrosion Resistance.
- > The Ability To Tolerate High Temperatures.
- > Extremely Malleable.
- > Only Standard Spanners Are Required; No Special Equipment Are Required.



# Brass Hose Nipple

1006

Brass Barb Hose Nipple Fittings of the highest standard are offered from us. We provide a high-quality variety of Joining Nipple under the expert direction of our specialists. These are developed in a variety of shapes and sizes, with or without threads, to meet the needs of various industries. Our product line is well-known for its high quality and smooth operation.



## Threads :

-> ISO Metric (MM) / BA / BSW / BSP / BSPT / BSF / BSB / UNC / UNF / UNEF / NPT / NPS.

# Brass Hose Nipple

## Material :

- > **Brass Alloy:** CuZn39Pb3 / CuZn39Pb2 / CuZn38Pb1.5 / CuZn37Pb2 / CuZn40Pb2 / MS 58 / BS2874 / IS 319 (Type I & II)
- > **UNS (ASTM):** C35300 / C35330 DZR / C36000 (CDA 360) / C36500 / C37000 / C37100 / C37700 / C37710 / C38500
- > **BS:** CZ121 / CZ122 / CZ124 / CZ128 / CZ 131 / CZ132
- > **EN:** CW602N / CW603N / CW606N / CW608N / CW612N / CW614N / CW617N
- > **JIS:** C3601 / C3602 / C3603 / C3604 / C3605 / C3712 / C3771

## Finish & Coating :

- > Natural Clean / Nickel Plated / Electro-Tin Plated / Silver Plated / Copper Plated / Zinc Plated / Chrome Plated.

## Highlights :

- > Brass is a lead-free material.
- > Proof against leakage.
- > Exceptional performance.
- > Very little maintenance.





# Brass Refrigeration Access Valve

1007

A brass refrigeration access valve is also known as a refrigeration service valve, a refrigerator service valve, a refrigeration valve, access valve fittings, an ac charge valve, a refrigerant charging valve, or a freon charging valve. It is used to charge different refrigerants used in refrigeration and air conditioning. It is a high-quality tuning valve needle valve plug that is utilized to keep the refrigeration flow going. Refrigeration Charging Valve and accessories for commercial refrigeration and air conditioning systems are used to charge or room refrigerant during air conditioning system maintenance of r22, r407c, or r410a.



## Threads :

-> ISO Metric (MM) / BA / BSW / BSP / BSPT / BSF / BSB / UNC / UNF / UNEF / NPT / NPS.

# Brass Refrigeration Access Valve

## Product Range :

- > 1/4"30- 100 mm
- > 1/8"30- 100 mm
- > 3/16"30- 100 mm
- > 5/16"30- 100 mm
- > 3/8"30- 100 mm

## Material :

- > **Brass Alloy:** CuZn39Pb3 / CuZn39Pb2 / CuZn38Pb1.5 / CuZn37Pb2 / CuZn40Pb2 / MS 58 / BS2874 / IS 319 (Type I & II)
- > **UNS (ASTM):** C35300 / C35330 DZR / C36000 (CDA 360) / C36500 / C37000 / C37100 / C37700 / C37710 / C38500
- > **BS:** CZ121 / CZ122 / CZ124 / CZ128 / CZ 131 / CZ132
- > **EN:** CW602N / CW603N / CW606N / CW608N / CW612N / CW614N / CW617N
- > **JIS:** C3601 / C3602 / C3603 / C3604 / C3605 / C3712 / C3771

## Finish & Coating :

- > Natural Clean / Nickel Plated / Electro-Tin Plated / Silver Plated / Copper Plated / Zinc Plated / Chrome Plated.

## Application :

- > Refrigeration -> Air conditioning

## Specification :

- > Inside out, the charging valve is a one-way service valve.
- > In the refrigeration, cold, and air conditioning units, the charging valve is employed.
- > The valve bonnet is knurled to make it easier to handle.
- > It is possible for the access valve tube to be soft or rigid.
- > A regular quality check is included with Valve.



## Features :

- > Clean interior and external surfaces at a high level.
- > Exceptional dimensional precision.
- > Heat transmission efficiency is high.
- > Welding is simple.
- > Corrosion resistance.
- > Leakage-proof.



# Brass Refrigeration Adaptor

1008

For your refrigeration service, we provide low-cost, high-quality access ports. Invayear access valves are designed to provide convenient, low-cost, and high-quality refrigeration service access ports.



## Threads :

-> ISO Metric (MM) / BA / BSW / BSP / BSPT / BSF / BSB / UNC / UNF / UNEF / NPT / NPS.

# Brass Refrigeration Adaptor

## Material :

- > **Brass Alloy:** CuZn39Pb3 / CuZn39Pb2 / CuZn38Pb1.5 / CuZn37Pb2 / CuZn40Pb2 / MS 58 / BS2874 / IS 319 (Type I & II)
- > **UNS (ASTM):** C35300 / C35330 DZR / C36000 (CDA 360) / C36500 / C37000 / C37100 / C37700 / C37710 / C38500
- > **BS:** CZ121 / CZ122 / CZ124 / CZ128 / CZ 131 / CZ132
- > **EN:** CW602N / CW603N / CW606N / CW608N / CW612N / CW614N / CW617N
- > **JIS:** C3601 / C3602 / C3603 / C3604 / C3605 / C3712 / C3771

## Finish & Coating :

- > Natural Clean / Nickel Plated / Electro-Tin Plated / Silver Plated / Copper Plated / Zinc Plated / Chrome Plated.

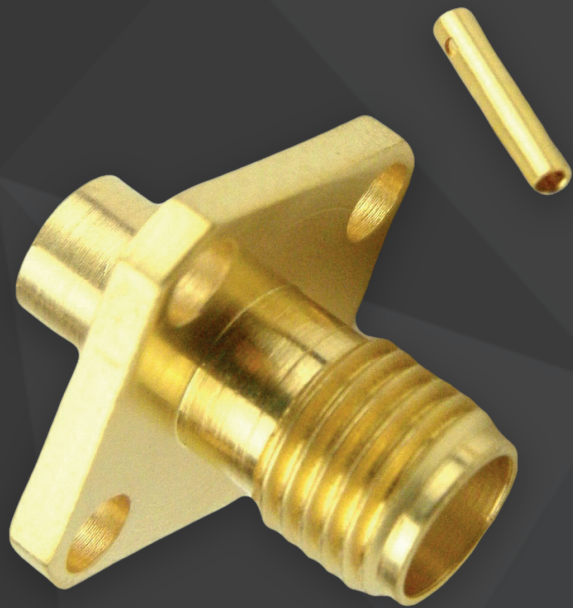
## Application :

- > Refrigeration -> Air conditioning



## Features :

- > It's made entirely of brass.
- > Machined to ARI 720 specifications.
- > All 1/4" SAE flare ends have tees and crosses machined to take an access core.
- > Internal ODS solder cups are found in access valves with pipe connections.
- > Adapters for SAE J2197 ACME threads with a 14" SAE thread.
- > Construction is entirely of brass and copper.

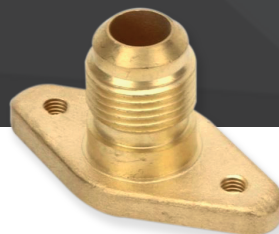


# Split Lock Valve

1009

Quick split lock valve made of brass. In order to completely delight our clients, we provide them with a high-quality, certified range of heat pumps for air conditioning.

At the vendor's end, the supplied variety is meant by masterly specialists, who make use of high-quality materials and cutting-edge technology in accordance with worldwide requirements. Flare fast lock valves are used to disconnect and reconnect the pipeline between an individual set air conditioning's interior and outdoor machines. Furthermore, the given brass split lock valve is made available in a variety of grades, sizes, and dimensions to meet the diverse needs of our clients.



## Threads :

-> ISO Metric (MM) / BA / BSW / BSP / BSPT / BSF / BSB / UNC / UNF / UNEF / NPT / NPS.

# Split Lock Valve

## Product Range :

-> 1/4"      -> 1/2"      -> 3/8"      -> 5/8"

## Material :

-> High Grade Free Cutting Brass

## Finish & Coating :

-> Natural Clean / Nickel Plated / Electro-Tin Plated / Silver Plated /  
Copper Plated / Zinc Plated / Chrome Plated.

## Application :

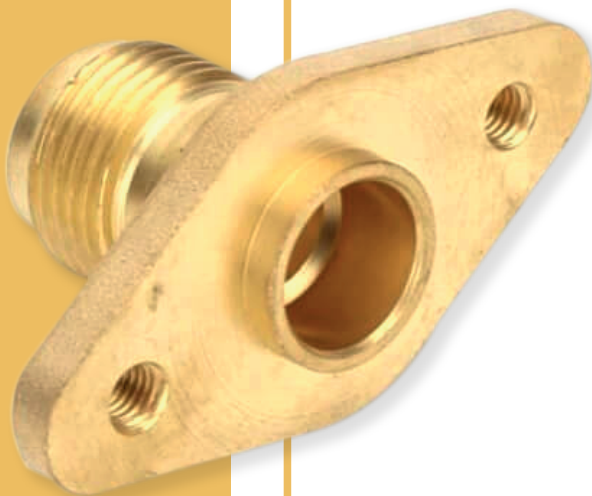
-> Heat Pump      -> Air conditioning

## Specification :

- > Inside out, the Air Conditioner Valve is a two-way service valve.
- > In a cold and air conditioning unit, the service valve is employed.
- > The valve bonnet is knurled to make it easier to handle.
- > It is possible for the access valve tube to be soft or rigid.

## Highlights :

- > Clean interior and external surfaces at a high level.
- > Exceptional dimensional precision.
- > Heat transmission efficiency is high.
- > Welding is simple.
- > Corrosion resistance
- > Leakage proof



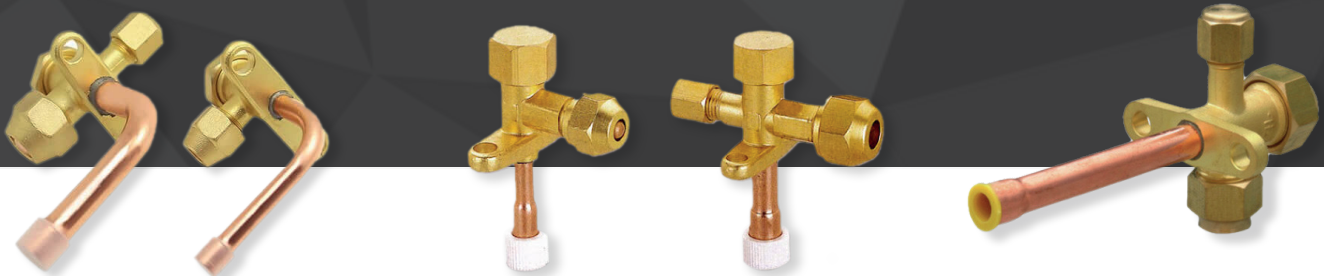


# Split AC Valve

## 1010

A split ac valve, also known as an ac service valve, is a type of ac valve. To best satisfy our consumers, we provide them with a high-quality authorized range of air conditioner valves for air conditioning.

At the vendor's end, the supplied variety is meant by masterly specialists, who make use of high-quality materials and cutting-edge technology following worldwide requirements. AC valves are used to disconnect and reconnect the pipeline between the interior and outdoor machines of an individually programmed air conditioning system. Furthermore, the given brass split ac valve is made available in a variety of grades, sizes, and dimensions to meet the diverse needs of our clients.



### Threads :

-> ISO Metric (MM) / BA / BSW / BSP / BSPT / BSF / BSB / UNC / UNF / UNEF / NPT / NPS.

# Split AC Valve

## Product Range :

-> 1/4" -> 5/16" -> 3/8" -> 1/2" -> 5/8" -> 3/4"

## Material :

-> High Grade Free Cutting Brass.  
-> High Grade Copper for pipe.

## Finish & Coating :

-> Natural Clean / Nickel Plated / Electro-Tin Plated / Silver Plated /  
Copper Plated / Zinc Plated / Chrome Plated.

## Application :

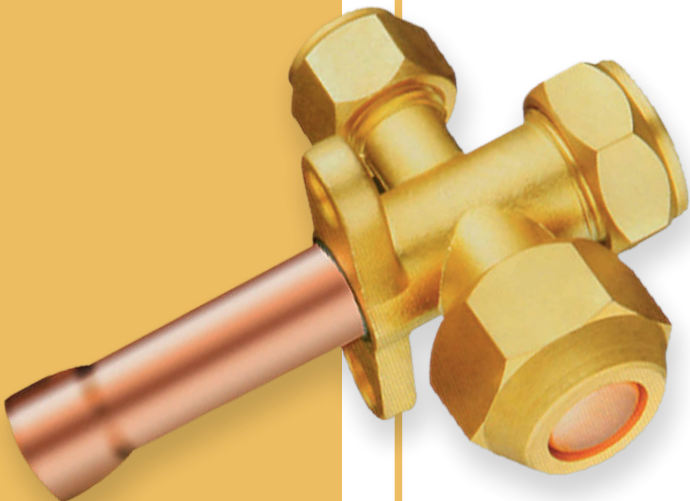
-> Air conditioning

## Specification :

-> Inside out, the Air Conditioner Valve is a two-way service valve.  
-> In a cold and air conditioning unit, the service valve is employed.  
-> The valve bonnet is knurled to make it easier to handle.  
-> It is possible for the access valve tube to be soft or rigid.

## Features :

-> Clean interior and external surfaces at a high level.  
-> Exceptional dimensional precision.  
-> Heat transmission efficiency is high.  
-> Welding is simple.  
-> Corrosion resistance  
-> Leakage proof





# Brass Pipe Fitting

1011

Our valued clients can obtain a broad assortment of Brass Pipe Fittings from us, which are produced of high-grade raw materials and are also robust and sturdy in nature. Our goods are widely utilized in the industrial sector and are available in a variety of lengths, widths, and dimensions to meet the needs of our clients. Pipe fitting is the installation or repair of pipe or tube systems that transport liquid, gas, and occasionally solid commodities.



## Threads :

-> ISO Metric (MM) / BA / BSW / BSP / BSPT / BSF / BSB / UNC / UNF / UNEF / NPT / NPS.

# Brass Pipe Fitting

## Product Range :

- > Brass Union Tee Female
- > Brass Union Elbow Female(BSP)
- > Brass Four Way Female Cross
- > Brass Reducing Nipple
- > Brass Hex Adapter
- > Brass Hex Head Plug
- > Brass Check Nut
- > Brass Long Nipple

## Material :

- > **Brass Alloy:** CuZn39Pb3 / CuZn39Pb2 / CuZn38Pb1.5 / CuZn37Pb2 / CuZn40Pb2 / MS 58 / BS2874 / IS 319 (Type I & II)
- > **UNS (ASTM):** C35300 / C35330 DZR / C36000 (CDA 360) / C36500 / C37000 / C37100 / C37700 / C37710 / C38500
- > **BS:** CZ121 / CZ122 / CZ124 / CZ128 / CZ 131 / CZ132
- > **EN:** CW602N / CW603N / CW606N / CW608N / CW612N / CW614N / CW617N
- > **JIS:** C3601 / C3602 / C3603 / C3604 / C3605 / C3712 / C3771

## Size :

- > M2 to M30 and up to M36, and 1/8", 5/32", 3/16", 1/4", 5/16", 3/8", 1/2", 3/4", 1", 1-1/2", 2" and as per Custom Designs and requirements

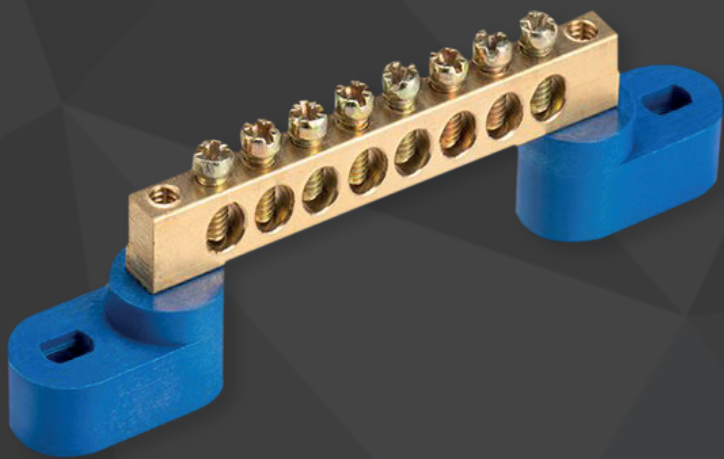
## Finish & Coating :

- > Natural Clean / Nickel Plated / Electro-Tin Plated / Silver Plated / Copper Plated / Zinc Plated / Chrome Plated.



## Features :

- > High performance.
- > Very low maintenance.



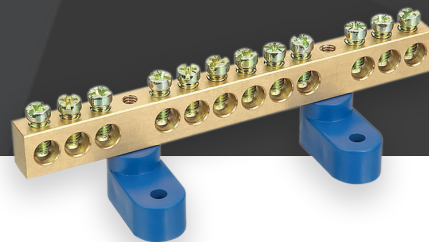
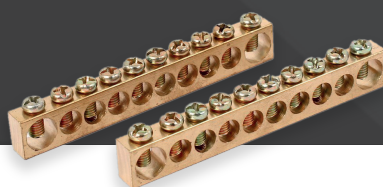
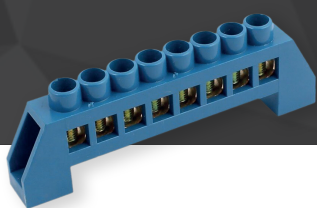
# Brass Neutral Links

1012

Brass Terminal Blocks and Brass Neutral Links are available in one-meter lengths. We also manufacture four-way, eight-way, and twelve-way tin-plated and nickel-plated brass neutral links.

We also design items based on our clients' demands and specifications. For all sorts of panel boards, switch gears, and electrical switch boards, we provide terminal blocks and neutral bar in brass, copper, and aluminum.

Custom specifications, sizes, and drawings are also available for these components. in order to suit the consumer's specific requirements.



## Threads :

-> ISO Metric (MM) / BA / BSW / BSP / BSPT / BSF / BSB / UNC / UNF / UNEF / NPT / NPS.

# Brass Neutral Links

## Product Range :

- > 2 Way to 108 Way, and Length up to 1.5 Meters
- > Sizes available from M2 to M30 and special up to M36, and 1/8", 5/32", 3/16", 1/4", 5/16", 3/8", 1/2", 3/4", 1", 1-1/2", 2" or Custom Designs and requirements.

## Material :

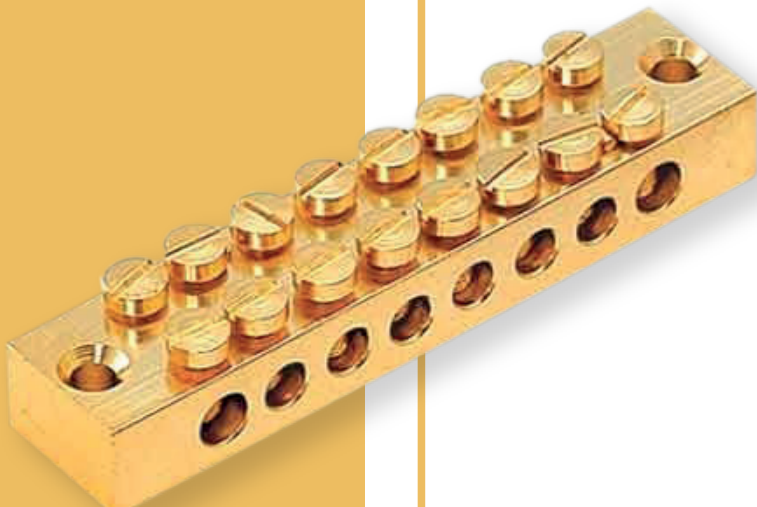
- > **Brass Alloy:** CuZn39Pb3 / CuZn39Pb2 / CuZn38Pb1.5 / CuZn37Pb2 / CuZn40Pb2 / MS 58 / BS2874 / IS 319 (Type I & II)
- > **UNS (ASTM):** C35300 / C35330 DZR / C36000 (CDA 360) / C36500 / C37000 / C37100 / C37700 / C37710 / C38500
- > **BS:** CZ121 / CZ122 / CZ124 / CZ128 / CZ 131 / CZ132
- > **EN:** CW602N / CW603N / CW606N / CW608N / CW612N / CW614N / CW617N
- > **JIS:** C3601 / C3602 / C3603 / C3604 / C3605 / C3712 / C3771

## Finish & Coating :

- > Natural Clean / Nickel Plated / Electro-Tin Plated / Silver Plated / Copper Plated / Zinc Plated / Chrome Plated.

## Accessories :

- > Screws (Brass / Steel), Washers, Nuts, Connecting Plate with Complete Assembly, as well as Plastics and Rubber Parts as required by the client.





# Brass Brake line Fitting

1013

Brass Brake Line Fuel Fittings such as brass inverted flare elbow, master cylinder, brass brake line tee, brass brake line connection adapter, Union are manufactured of high-grade raw material and are strong and durable in nature. Our goods are widely utilized in industry and are available in a variety of lengths, sizes, dimensions, and drawings to meet the needs of our clients.



## Threads :

-> ISO Metric (MM) / BA / BSW / BSP / BSPT / BSF / BSB / UNC / UNF / UNEF / NPT / NPS.

# Brass Brake Line Fitting

## Product Range :

- > Brass Brake Line Tee
- > Brass Brake Line Master Cylinder
- > Brass Brake Line Fuel Elbow
- > Brass Connector Adapter Plug

## Material :

- > **Brass Alloy:** CuZn39Pb3 / CuZn39Pb2 / CuZn38Pb1.5 / CuZn37Pb2 / CuZn40Pb2 / MS 58 / BS2874 / IS 319 (Type I & II)
- > **UNS (ASTM):** C35300 / C35330 DZR / C36000 (CDA 360) / C36500 / C37000 / C37100 / C37700 / C37710 / C38500
- > **BS:** CZ121 / CZ122 / CZ124 / CZ128 / CZ 131 / CZ132
- > **EN:** CW602N / CW603N / CW606N / CW608N / CW612N / CW614N / CW617N
- > **JIS:** C3601 / C3602 / C3603 / C3604 / C3605 / C3712 / C3771

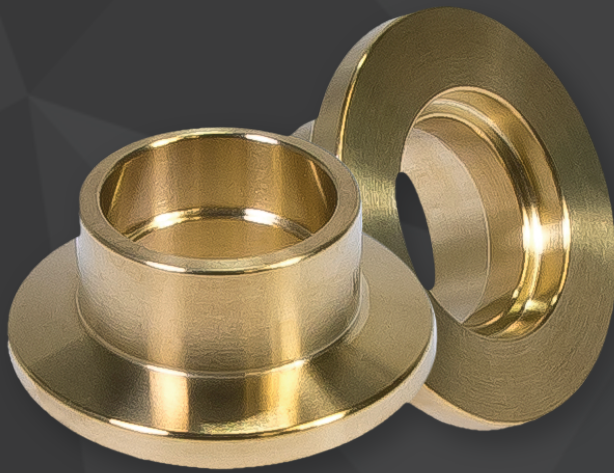
## Finish & Coating :

- > Natural Clean / Nickel Plated / Electro-Tin Plated / Silver Plated / Copper Plated / Zinc Plated / Chrome Plated.

## Features :

- > Robust
- > High performance
- > Very low maintenance





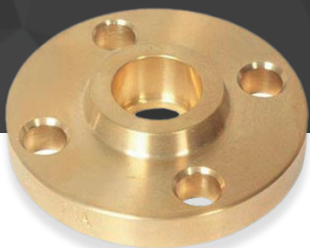
# Brass Flanges

1014

We are the leading producer of Brass and Copper flanges. We created flanges to integrate with innovative technology and a quick shipping facility. Our crew manufactures brass pipe flanges of proven high quality.

We also design in accordance with the customer's specifications, dimensions, and drawings. We have a wide range of sizes and specifications available.

These components are also available in customized specifications and sizes. in order to meet the exact needs mentioned by the clients.



## Threads :

-> ISO Metric (MM) / BA / BSW / BSP / BSPT / BSF / BSB / UNC / UNF / UNEF / NPT / NPS.

# Brass Flanges

## Product Range :

- > Brass pipe flanges
- > Brass floor flanges
- > Brass open flanges
- > Brass Blank flanges
- > Brass Flange for Heating Element
- > Brass flange nuts
- > Brass companion flange
- > Copper flanges

## Material :

- > **Brass Alloy:** CuZn39Pb3 / CuZn39Pb2 / CuZn38Pb1.5 / CuZn37Pb2 / CuZn40Pb2 / MS 58 / BS2874 / IS 319 (Type I & II)
- > **UNS (ASTM):** C35300 / C35330 DZR / C36000 (CDA 360) / C36500 / C37000 / C37100 / C37700 / C37710 / C38500
- > **BS:** CZ121 / CZ122 / CZ124 / CZ128 / CZ 131 / CZ132
- > **EN:** CW602N / CW603N / CW606N / CW608N / CW612N / CW614N / CW617N
- > **JIS:** C3601 / C3602 / C3603 / C3604 / C3605 / C3712 / C3771

## Standard :

- > DIN, ISO, ASTM, EN, JIS, GB & All International Standard.

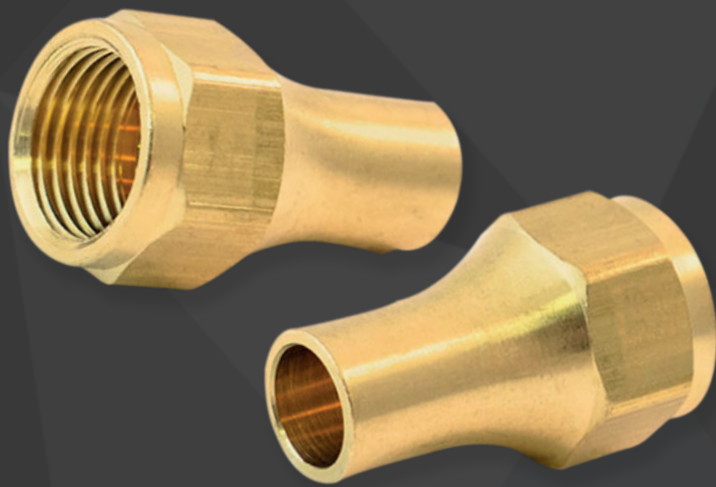
## Finish & Coating :

- > Natural Clean / Nickel Plated / Electro-Tin Plated / Silver Plated / Copper Plated / Zinc Plated / Chrome Plated.

## Features :

- > Dimensional precision and accuracy.
- > Threads in accordance with International Go and No-Go Standards.
- > Surface Finish is excellent.
- > Rustproof & Stable





# Brass Flare Nut

1015

We manufacture and export Brass Flare Nut fittings, thanks to our panel of well-experienced employees. These brass forged flare nuts are available in different of sizes and thicknesses.

These flare nuts are used in gas fittings, air conditioners, refrigeration, copper pipe fittings, construction, vehicle, and engineering sectors, and are sent to our customers in a secure package. Brass Flare Nut is thoroughly checked on a variety of quality standards before delivery by our expert quality analysts.



## Threads :

-> ISO Metric (MM) / BA / BSW / BSP / BSPT / BSF / BSB / UNC / UNF / UNEF / NPT / NPS.

# Brass Flare Nut

## Product Range :

- > Brass Hex Flare Nut
- > Brass Dead Cap Nut
- > Brass Reducing Flare Nut
- > Brass Split Valve Flare Nut
- > Brass Cylinder Valve Cap Nut
- > Brass Long Neck Flare Nut

## Material :

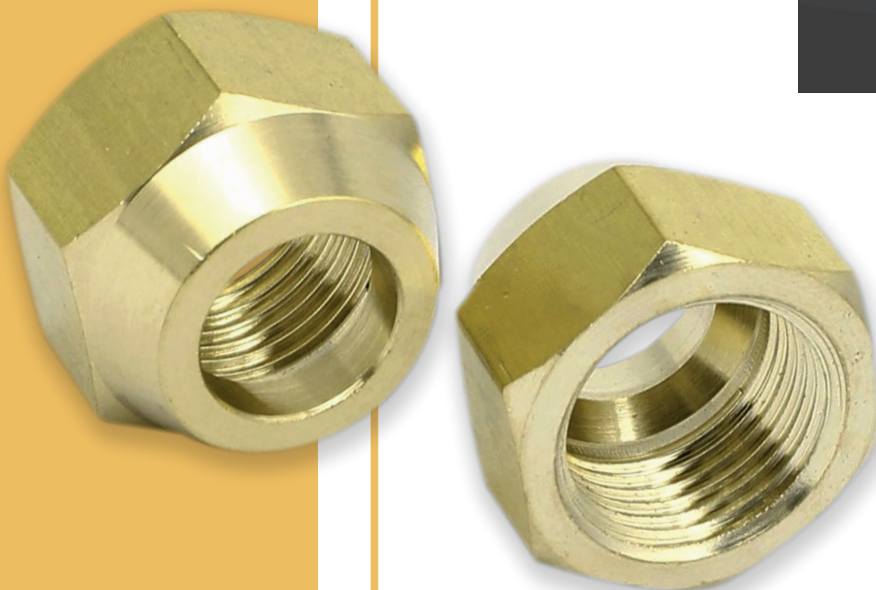
- > **Brass Alloy:** CuZn39Pb3 / CuZn39Pb2 / CuZn38Pb1.5 / CuZn37Pb2 / CuZn40Pb2 / MS 58 / BS2874 / IS 319 (Type I & II)
- > **UNS (ASTM):** C35300 / C35330 DZR / C36000 (CDA 360) / C36500 / C37000 / C37100 / C37700 / C37710 / C38500
- > **BS:** CZ121 / CZ122 / CZ124 / CZ128 / CZ 131 / CZ132
- > **EN:** CW602N / CW603N / CW606N / CW608N / CW612N / CW614N / CW617N
- > **JIS:** C3601 / C3602 / C3603 / C3604 / C3605 / C3712 / C3771

## Size :

- > M2 - M30 and up to M36, and 1/4 3/8 1/2 5/8 3/4 5/16 7/8 and as per Custom Designs and requirements.

## Finish & Coating :

- > Natural Clean / Nickel Plated / Electro-Tin Plated / Silver Plated / Copper Plated / Zinc Plated / Chrome Plated.





# Brass Terminal Blocks

1016

Brass Terminal Blocks and Brass Neutral Links are available in lengths of up to one meter. We also make 4 way, 8 way, and 12-way tin plated and nickel plated brass neutral linkages. We also create products based on the needs and specifications of our customers. For all sorts of panel boards, switch gears, and electrical switchboards, we provide brass terminal blocks and neutral bars.

These components are also available in custom specifications and sizes. in order to meet the exact needs mentioned by the clients.



## Threads :

-> ISO Metric (MM) / BA / BSW / BSP / BSPT / BSF / BSB / UNC / UNF / UNEF / NPT / NPS / Specified Threads Any threads as per client specification.

# Brass Terminal Blocks

## Material :

- > **Brass Alloy:** CuZn39Pb3 / CuZn39Pb2 / CuZn38Pb1.5 / CuZn37Pb2 / CuZn40Pb2 / MS 58 / BS2874 / IS 319 (Type I & II)
- > **UNS (ASTM):** C35300 / C35330 DZR / C36000 (CDA 360) / C36500 / C37000 / C37100 / C37700 / C37710 / C38500
- > **BS:** CZ121 / CZ122 / CZ124 / CZ128 / CZ 131 / CZ132
- > **EN:** CW602N / CW603N / CW606N / CW608N / CW612N / CW614N / CW617N
- > **JIS:** C3601 / C3602 / C3603 / C3604 / C3605 / C3712 / C3771

## Size :

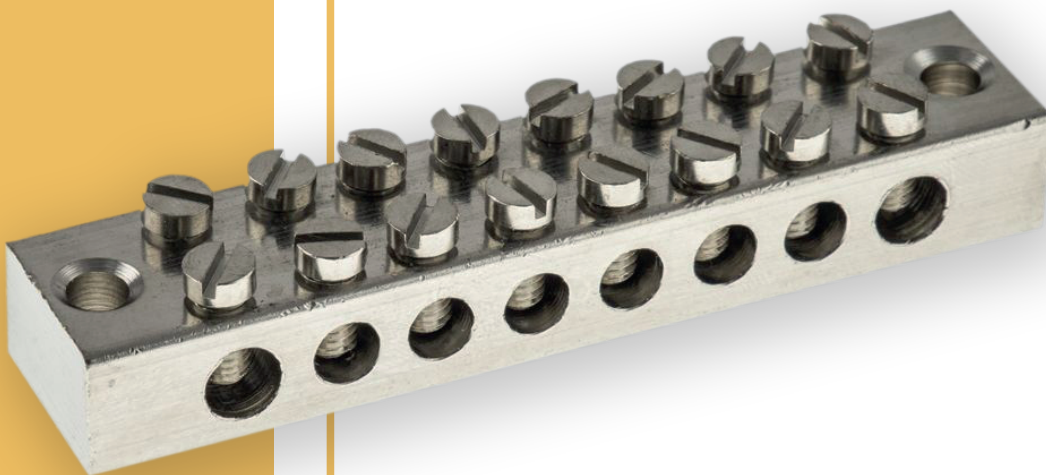
- > Sizes available from M2 to M30 and special up to M36, and 1/8", 5/32", 3/16", 1/4", 5/16", 3/8", 1/2", 3/4", 1", 1-1/2", 2" or Custom Designs and requirements.

## Finish & Coating :

- > Natural Clean / Nickel Plated / Electro-Tin Plated / Silver Plated / Copper Plated / Zinc Plated / Chrome Plated.

## Accessories :

- > Screws (Brass / Steel), Washers, Nuts, Connecting Plate with Complete Assembly, as well as Plastics and Rubber Parts as required by the client.



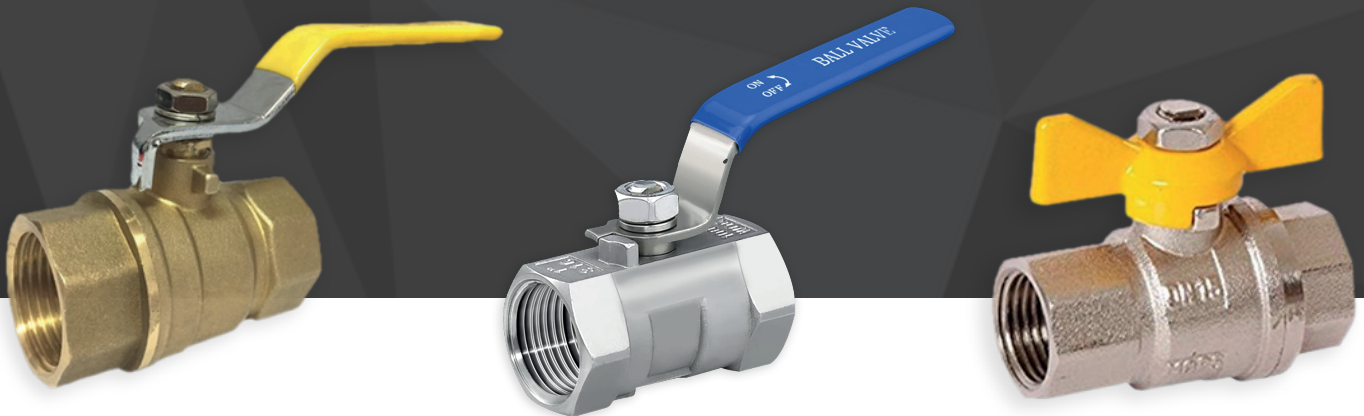


# Brass Ball Valve

1017

Brass ball valves are intended to give years of service at a low cost and are available in a variety of end configurations and choices.

Brass ball valves for light commercial and household applications. Typical services include; Multi-purpose shut-off valve for use in home hot and cold water systems, natural or bottled gas and compressed air systems.



## Threads :

-> ISO Metric (MM) / BA / BSW / BSP / BSPT / BSF / BSB / UNC / UNF / UNEF / NPT / NPS.

# Brass Ball Valve

## Material :

- > **Brass Alloy:** CuZn39Pb3 / CuZn39Pb2 / CuZn38Pb1.5 / CuZn37Pb2 / CuZn40Pb2 / MS 58 / BS2874 / IS 319 (Type I & II)
- > **UNS (ASTM):** C35300 / C35330 DZR / C36000 (CDA 360) / C36500 / C37000 / C37100 / C37700 / C37710 / C38500
- > **BS:** CZ121 / CZ122 / CZ124 / CZ128 / CZ 131 / CZ132
- > **EN:** CW602N / CW603N / CW606N / CW608N / CW612N / CW614N / CW617N
- > **JIS:** C3601 / C3602 / C3603 / C3604 / C3605 / C3712 / C3771

## Size :

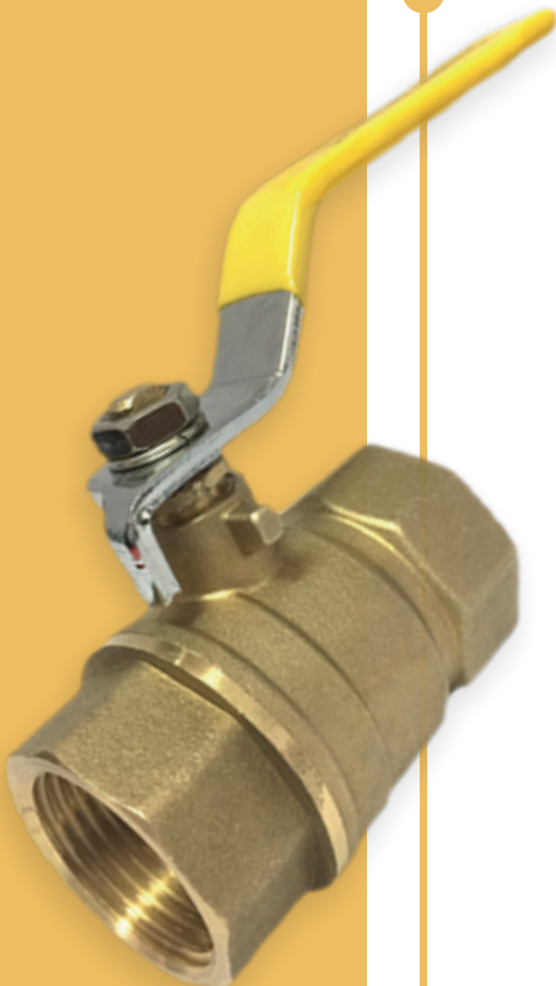
- > 1/4" , 3/8" , 1" , 2" , 1/2" , 3/4" , 1-1/4" , 1-1/2" , 2-1/2" , 3 "

## Finish & Coating :

- > Natural Clean / Nickel Plated / Electro-Tin Plated / Silver Plated / Copper Plated / Zinc Plated / Chrome Plated.

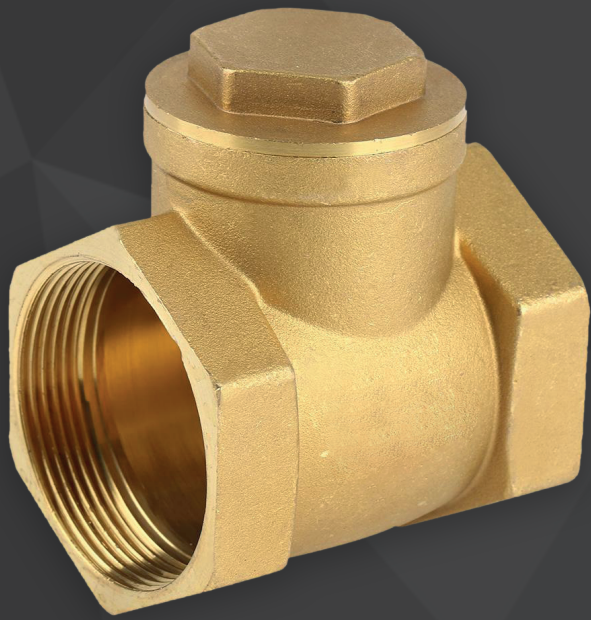
## Application :

- > Oil      -> Gas & Water



## Features :

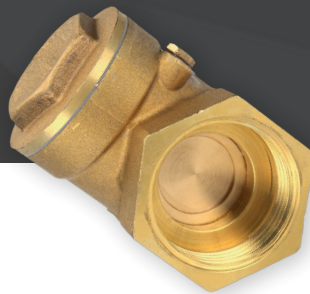
- > Lead-free material in accordance with the standard.
- > It is suitable for use with high-pressure applications.
- > Ball Valves are available in a variety of finishes, including natural brass, nickel, and chrome plating.
- > Extremely corrosion resistant over a wide temperature range.
- > Before shipment, 100% of the parts must pass a leaking tight test.
- > High dimensional precision.
- > Annealing treatment on the body and bonnet to avoid cracking and provide a long, lasting lifetime and safe use.
- > Simple to assemble.
- > Ideal for use with high-pressure applications.



# Brass Swing Check Valve

1018

The Brass Swing Check Valve prevents fluids from backing up into the water supply and also prevents backflow from wells and boiler systems. This lead-free horizontal non-return check valve is suited for all potable water supply installations. It's made of brass for strength and durability.



## Threads :

-> ISO Metric (MM) / BA / BSW / BSP / BSPT / BSF / BSB / UNC / UNF / UNEF / NPT / NPS.

# Brass Swing Check Valve



## Material :

- > **Brass Alloy:** CuZn39Pb3 / CuZn39Pb2 / CuZn38Pb1.5 / CuZn37Pb2 / CuZn40Pb2 / MS 58 / BS2874 / IS 319 (Type I & II)
- > **UNS (ASTM):** C35300 / C35330 DZR / C36000 (CDA 360) / C36500 / C37000 / C37100 / C37700 / C37710 / C38500
- > **BS:** CZ121 / CZ122 / CZ124 / CZ128 / CZ 131 / CZ132
- > **EN:** CW602N / CW603N / CW606N / CW608N / CW612N / CW614N / CW617N
- > **JIS:** C3601 / C3602 / C3603 / C3604 / C3605 / C3712 / C3771

## Size :

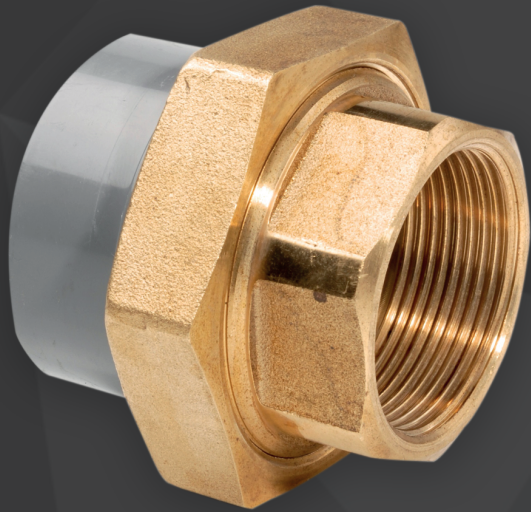
- > 1" 2", 3", 1/2", 3/4", 1-1/4", 1-1/2"

## Finish & Coating :

- > Natural Clean / Nickel Plated / Electro-Tin Plated / Silver Plated / Copper Plated / Zinc Plated / Chrome Plated.

## Features :

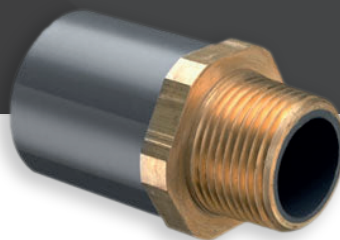
- > Material that is lead-free.
- > Body is made of brass.
- > Used to prevent fluid back flow.
- > Lead-free, making it appropriate for all potable water supply applications.
- > Before shipment, 100% of the parts must pass a leaking tight test.
- > High dimensional precision.
- > Annealing treatment on the body and bonnet to avoid cracking and provide a long, lasting lifetime and safe use.



# Brass PVC Fitting

1019

We provide high-quality Brass UPVC PVC PPR CPVC Fitting constructed of high-grade materials. we manufacture the Industrial Brass Fitting. Our product line comprises a variety of uPVC brass elbows, upvc tank nipples, upvc brass fittings, uPVC brass tee, upvc pipe fittings, and upvc brass fta.



## Threads :

-> ISO Metric (MM) / BA / BSW / BSP / BSPT / BSF / BSB / UNC / UNF / UNEF / NPT / NPS.

# Brass PVC Fitting

## Product Range :

- > Brass UPVC Elbow
- > Brass UPVC Tank Nipple
- > Brass UPVC Tee
- > Brass UPVC Mta
- > Brass UPVC Fta

## Material :

- > **Brass Alloy:** CuZn39Pb3 / CuZn39Pb2 / CuZn38Pb1.5 / CuZn37Pb2 / CuZn40Pb2 / MS 58 / BS2874 / IS 319 (Type I & II)
- > **UNS (ASTM):** C35300 / C35330 DZR / C36000 (CDA 360) / C36500 / C37000 / C37100 / C37700 / C37710 / C38500
- > **BS:** CZ121 / CZ122 / CZ124 / CZ128 / CZ 131 / CZ132
- > **EN:** CW602N / CW603N / CW606N / CW608N / CW612N / CW614N / CW617N
- > **JIS:** C3601 / C3602 / C3603 / C3604 / C3605 / C3712 / C3771

## Finish & Coating :

- > Natural Clean / Nickel Plated / Electro-Tin Plated / Silver Plated / Copper Plated / Zinc Plated / Chrome Plated.





# Brass Spacers

1020

We offer a wide range of Brass Spacers and Brass Standoffs. It will be used for the circuit board. These spacers come in a variety of forms and sizes. A standoff is a component used in mechanics and electronics.

These components are also available in custom specs and sizes, to meet the exact needs mentioned by the clients.



## Threads :

-> ISO Metric (MM) / BA / BSW / BSP / BSPT / BSF / BSB / UNC / UNF / UNEF / NPT / NPS.

# Brass Spacers

## Product Range :

- > Brass Round Spacers
- > Brass Hex Standoffs
- > Brass Hex Spacers
- > Brass Spacers 3mm
- > Brass Spacers 6mm
- > Brass Spacers 8mm

## Material :

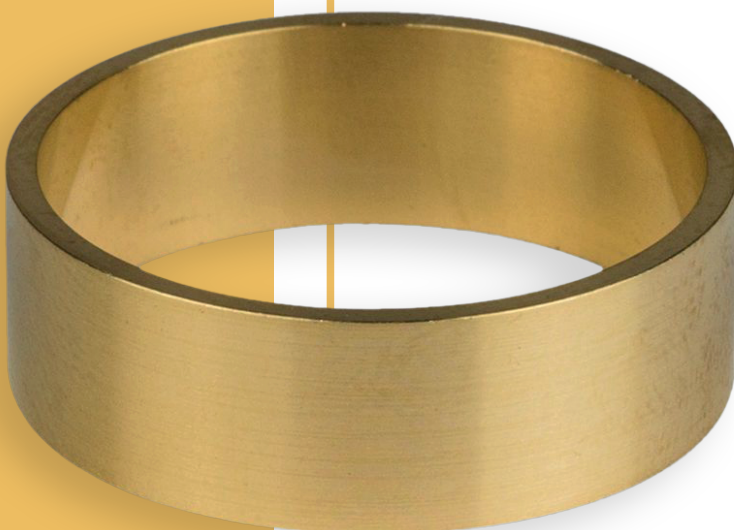
- > **Brass Alloy:** CuZn39Pb3 / CuZn39Pb2 / CuZn38Pb1.5 / CuZn37Pb2 / CuZn40Pb2 / MS 58 / BS2874 / IS 319 (Type I & II)
- > **UNS (ASTM):** C35300 / C35330 DZR / C36000 (CDA 360) / C36500 / C37000 / C37100 / C37700 / C37710 / C38500
- > **BS:** CZ121 / CZ122 / CZ124 / CZ128 / CZ 131 / CZ132
- > **EN:** CW602N / CW603N / CW606N / CW608N / CW612N / CW614N / CW617N
- > **JIS:** C3601 / C3602 / C3603 / C3604 / C3605 / C3712 / C3771

## Size :

- > M4, M5, M6, M8, M10, M12, M14

## Finish & Coating :

- > Natural Clean / Nickel Plated / Electro-Tin Plated / Silver Plated / Copper Plated / Zinc Plated / Chrome Plated.



# Contact

[www.Invayear.com](http://www.Invayear.com)



[contact@invayear.com](mailto:contact@invayear.com)  
[inquiry@invayear.com](mailto:inquiry@invayear.com)



+ 370 662 58 160



Metalo gatve - 11, Vilnius  
LT: 02190, Lithuania

