

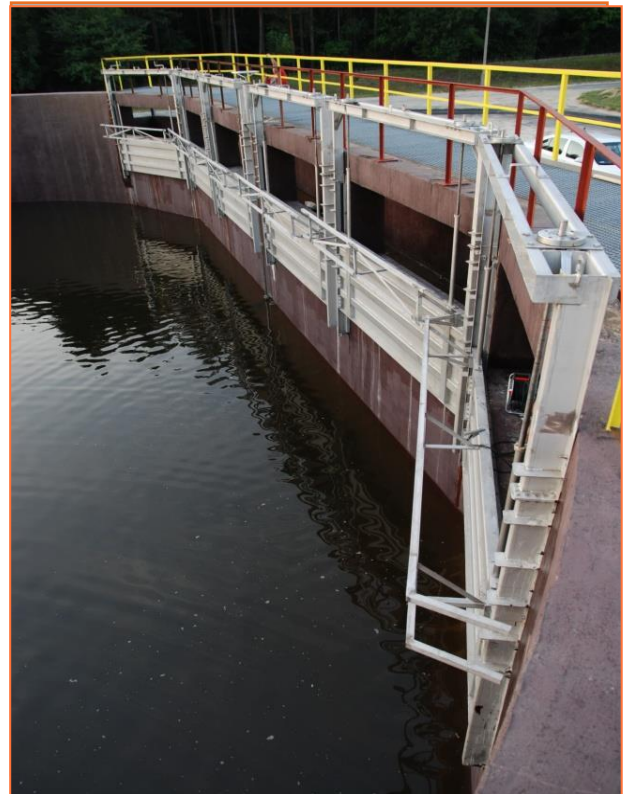


WEIR WALL PENSTOCK TYPE MV-ZNP

- weir wall penstocks are used for shutting off or adjusting the flow (with the gate moving down),
- for use in channels with drinking water, waste water, cooling water, river water etc.,
- FEM-aided individual structural calculations performed for specific operational parameters and places of installation,
- all stainless steel elements undergo etching and passivation by dipping or spraying,
- actuator is mounted directly on a frame, central or shifted support,
- penstocks are pressure tested in the factory.

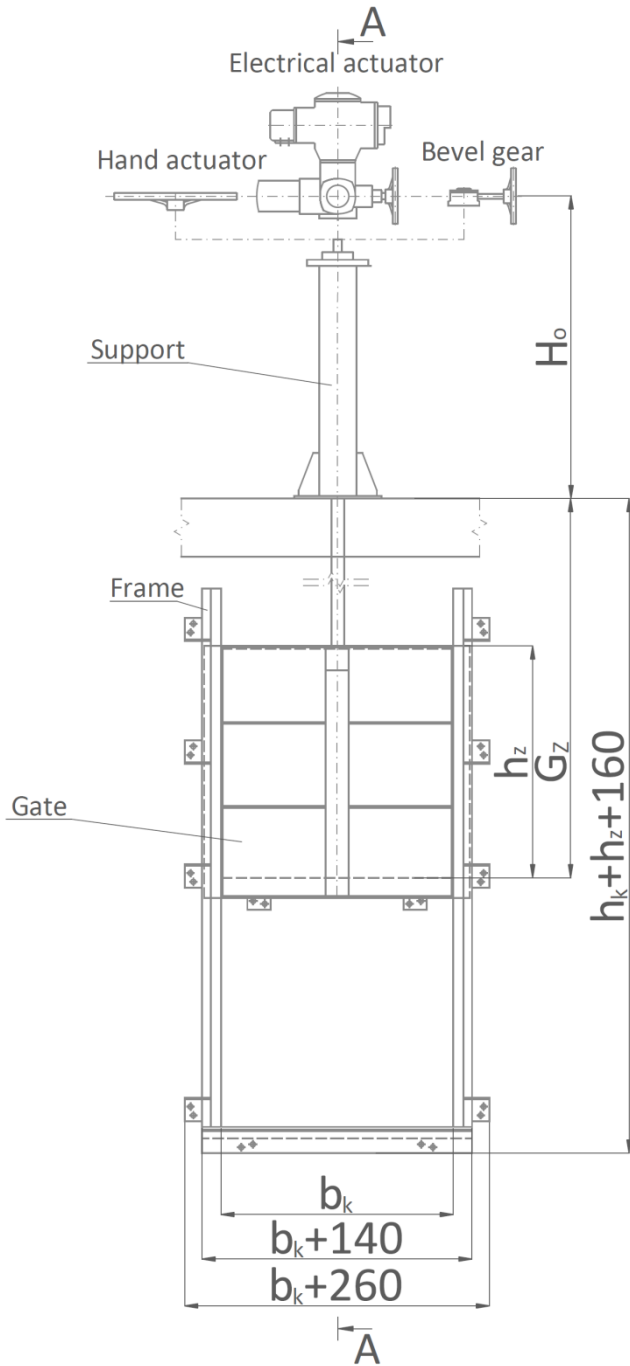
TECHNICAL DATA

Work pressure:	up to the top of the gate (tightness based on PN-EN 12266-2, table A.5, tightness class: C, tightness based on DIN 19569-4 tightness class: 3
Penstock width: [mm]	150 to 4000, penstocks of widths exceeding 4000 are made to special orders
Gate height: [mm]	150 to 4000, penstocks of gate heights exceeding 4000 are made to special orders
Material:	1.4301, 1.4541, 1.4571, Duplex, etc.
Actuator:	electric, pneumatic, hand actuator, bevel gear
Seal:	EPDM, NBR, Viton or others

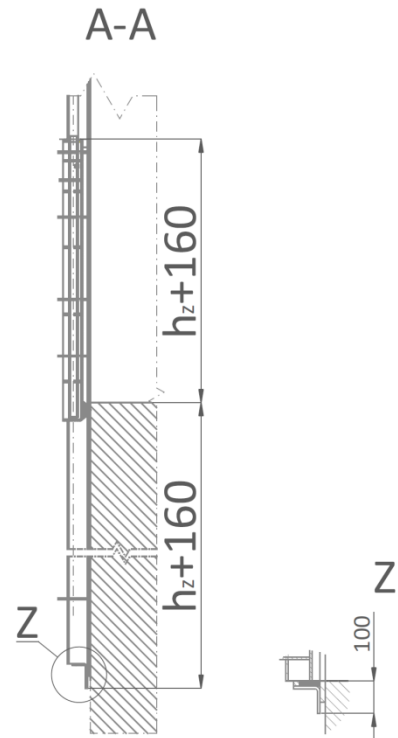




Penstock type MV-ZNP Weir wall penstock with a central support

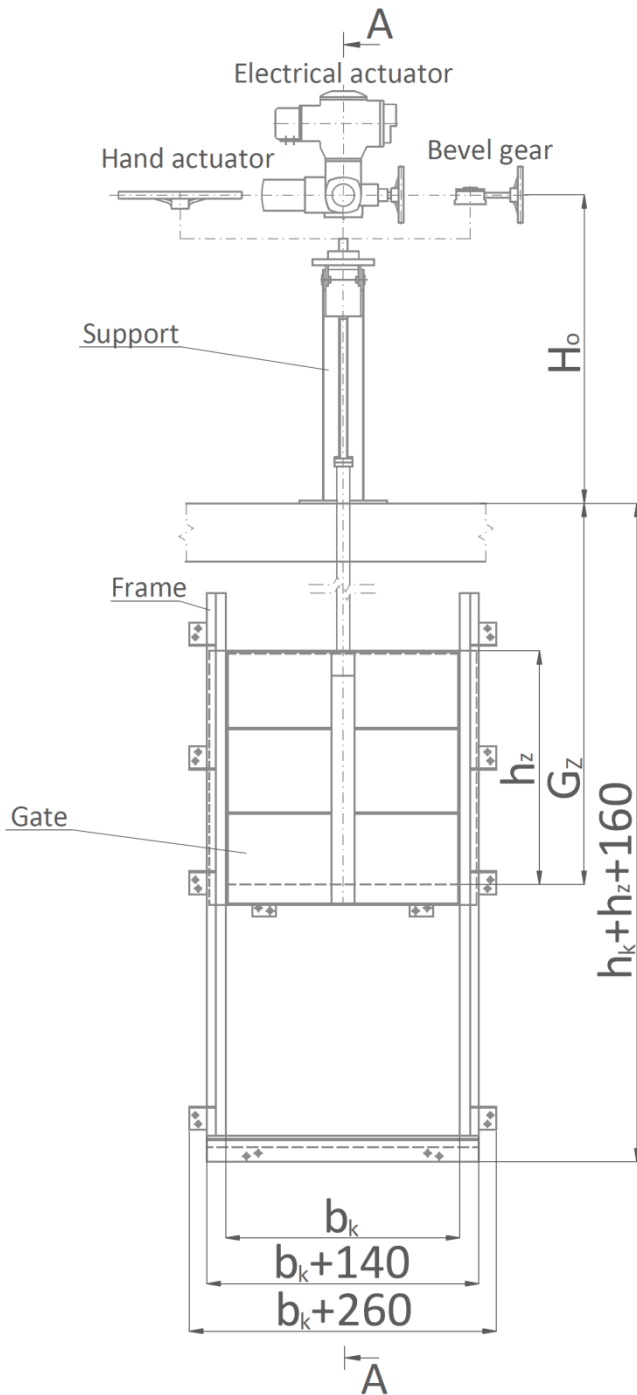


- Channel width \$b_k = \dots\dots\dots\$
- Gate height \$h_z = \dots\dots\dots\$
- Depth \$G_z = \dots\dots\dots\$
- Height from operating level \$H_0 = \dots\dots\dots\$
- Actuator \$\dots\dots\dots\$
- Seal*: \$\dots\dots\dots\$
- EPDM/NBR/Viton
- * delete as appropriate

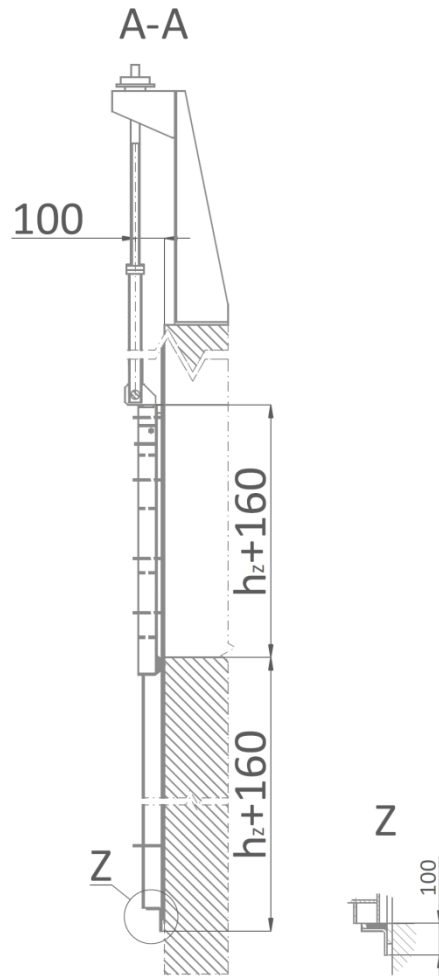


Penstock type MV-ZNP

Weir wall penstock with a shifted support

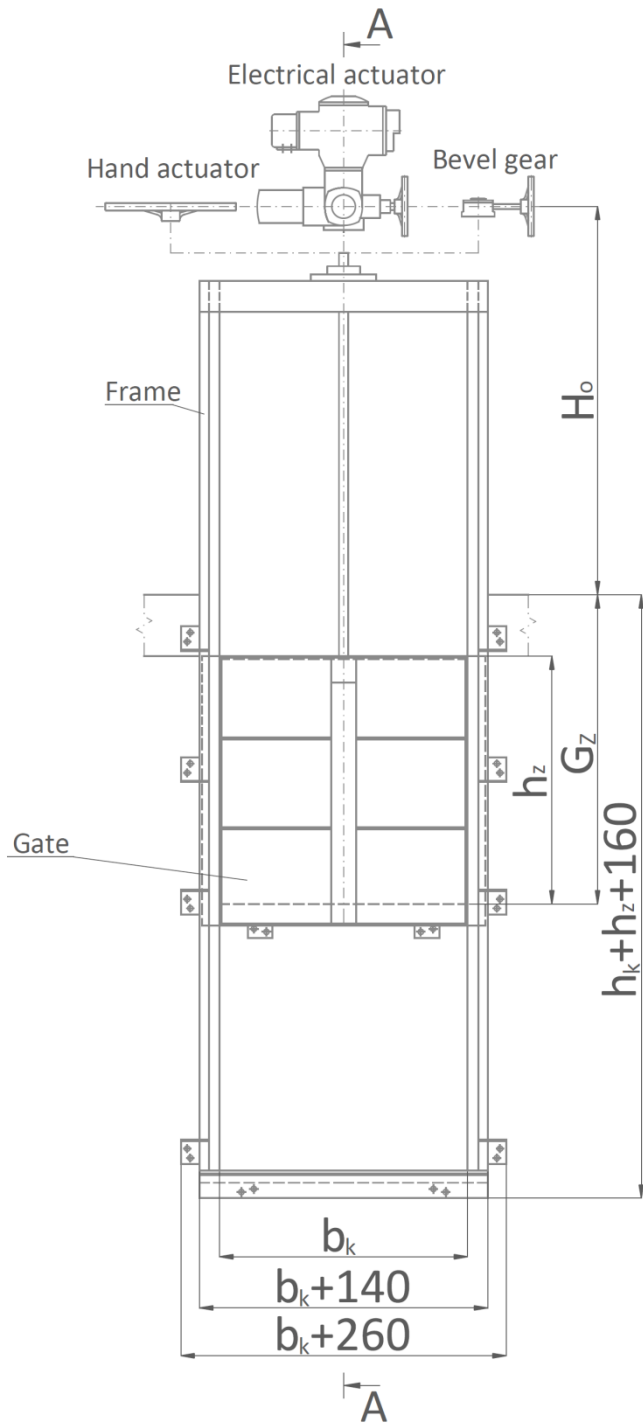


- Channel width b_k =
- Gate height h_z =
- Depth G_z =
- Height from operating level H_o =
- Actuator
- Seal*:
EPDM/NBR/Viton
- * delete as appropriate

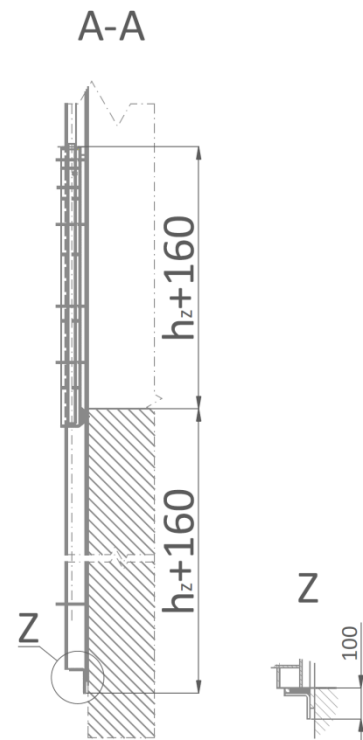


Penstock type MV-ZNP

Weir wall penstock with a frame extended to the operating level

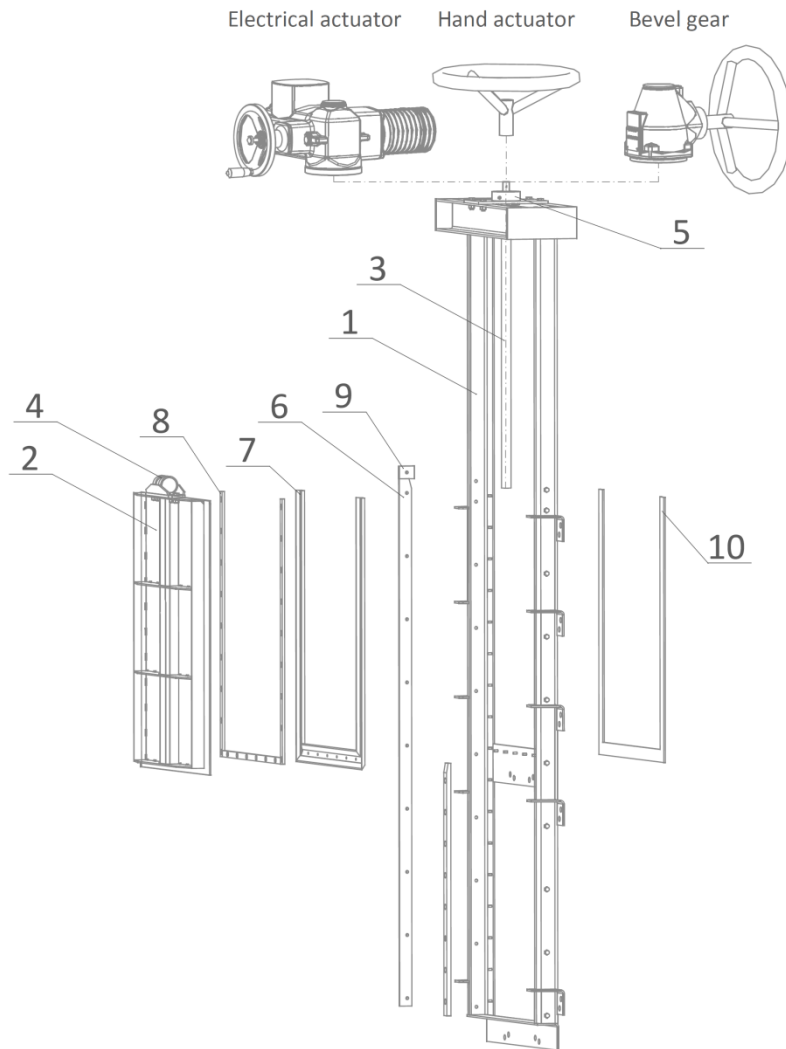


- Channel width bk =
- Gate height hz =
- Depth Gz =
- Height from operating level Ho =
- Actuator
- Seal*:
EPDM/NBR/Viton
- * delete as appropriate





Penstock type MV-ZNP



No.	Element	Material*
1	Welded frame	1.4301, 1.4541, 1.4571, Duplex, etc.
2	Gate	1.4301, 1.4541, 1.4571, Duplex, etc.
3	Stem	1.4301, 1.4541, 1.4571, etc.
4	Stem nut	Self-lubricating brass Rg7
5	Ball bearings	Stainless steel
6	Sliders	POM-C or PTFE,
7	Seal	EPDM, NBR, Viton
8	Holdfast seals	1.4301, 1.4541, 1.4571, Duplex, etc.
9	Bumper	POM-C or PTFE
10	Wall seal	Foam

* Delete as appropriate. Other versions available on special order



multivalve

Multivalve Sp. z o.o.
44-109 Gliwice, ul. Eiffel'a 6
tel. + 48 32 661 00 00
fax: + 48 32 661 00 01
multivalve@multivalve.pl
www.multivalve.pl

TÜV Rheinland certified
ISO 9001 - 2008