



TRIPLE ECCENTRIC VALVE TYPE MV-PK3E

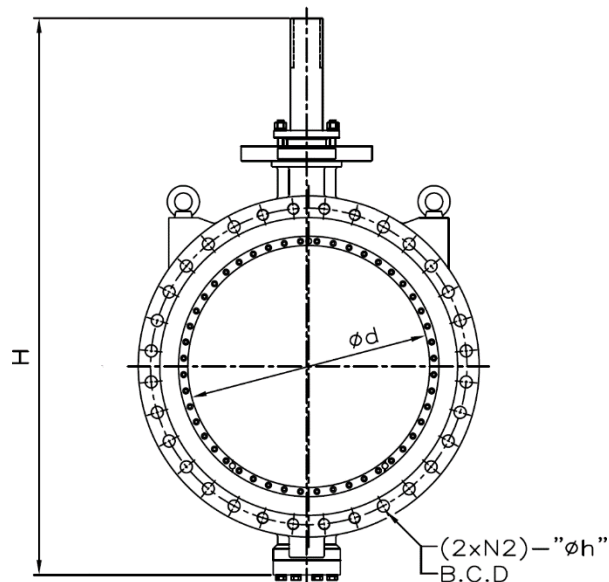
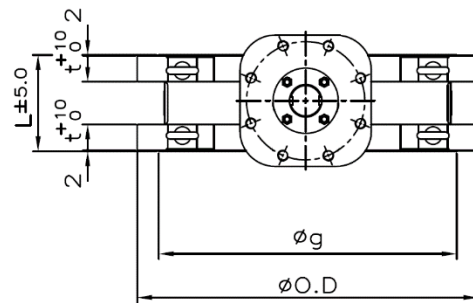
- Triple eccentric valve is used as a control or shut-off valve intended for operation with air, process gases, coke oven gas and other,
- tightness class "A" in both flow directions, according to PN-EN 12266-2,
- triple eccentric design provides low torque and long use of valve,
- triple eccentric valves MV-PK3E are used in power generation, chemical, petrochemical, metallurgical, mining, coke cement, paper and sugar industries.

TECHNICAL DATA

Flange drilling:	PN-EN 1092-1, ANSI preparation for welded joints or other connections available on special order
Nominal diameter:	DN 50 do DN 1500. Średnice powyżej DN 1500 dostępne na specjalne zamówienie
Connection:	PN6 to PN63, depending on the parameters
Temperature range:	196°C to 650°C (depending on material) Individual customer requirements possible
Material:	carbon steel, stainless steel, acid resistant steel or other
Actuator:	electric, pneumatic, hydraulic, manual actuator
Sealing:	metal-metal



Triple eccentric valve type MV-PK3E



Design dimensions acc. to PN10

DN d [mm]	High H [mm]	Pitch circle diameter B.C.D [mm]	Number of connection holes [pcs.]	Diameter of connection hole [mm]	Flange thickness g [mm]	Dimension ØO.D [mm]	Dimension øg [mm]	Face to face* L [mm]	Weight [kg]
700	1450	840	2x24	30	69,9	925	800	292	939
800	1790	950	2x24	33	79,4	1060	914	318	1363
900	1910	1050	2x28	33	88,9	1170	1022	330	1621
1000	2060	1160	2x28	36	88,9	1290	1124	410	2197
1200	2315	1380	2x32	39	106,4	1510	1360	470	3437

* The triple eccentric valve design can be suited to individual customer requirements taking into account butterfly valve dimensions (diameter, flange drilling, thickness flange and face to face length), mounting arrangements and any other process requirements



multivalve

Multivalve Sp. z o.o.
44-109 Gliwice, ul. Eiffel'a 6
tel. + 48 32 661 00 00
fax: + 48 32 661 00 01
multivalve@multivalve.pl
www.multivalve.pl

TÜV Rheinland certified
ISO 9001 - 2008