

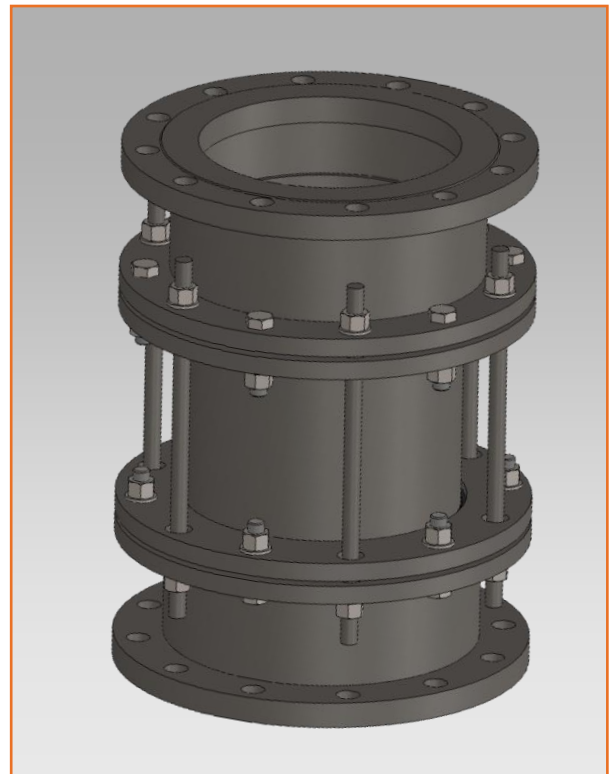


DISMANTLING JOINT TYP MV-KPU/FG2

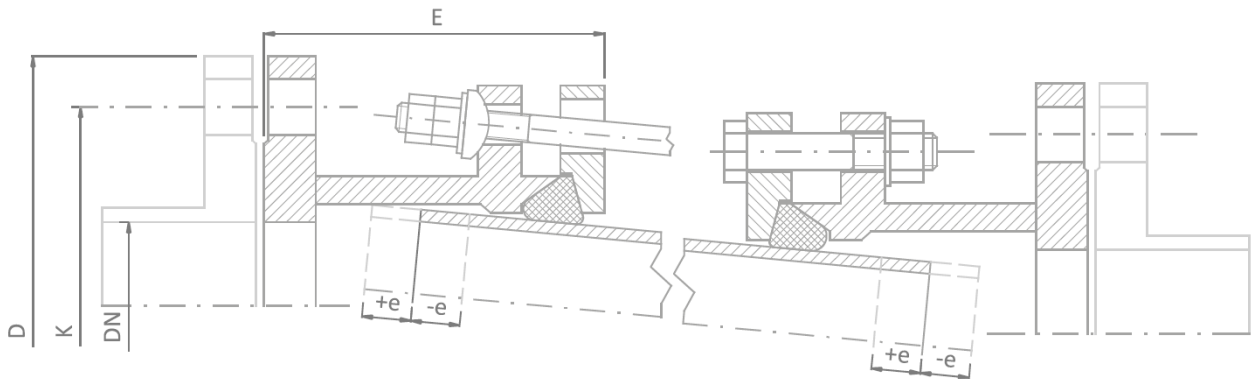
- dismantling joint with radial mounting clearance, applied for installing and removing various types of shut-off and regulating valves,
- value of the radial clearance is 8.7% of the pipe length between the heads.
- possibility of customising face to face length and flange connections,
- dismantling joint is intended for operation with air, gas, drinking water, process water, sewage and other media,
- all stainless steel elements undergo etching and passivation by dipping or spraying,
- dismantling joint MV-KPU/FG2 is used in water supply management and waste-water treatment, power generation, mining, chemical, petrochemical, metallurgical, cement and paper industries.

TECHNICAL DATA

Flange drilling:	PN 2,5, PN 6, PN 10, PN 16, PN 25 or others
Nominal diameter:	DN 50 to DN 2400, customised diameters and diameters above DN 2400 made to special orders
Material:	carbon steels, stainless steels, acid resistant steels or others
Corrosion protection:	primer painting, epoxy/bitumen, coating, zinc plating or hot dip galvanization, etching and passivation (stainless and acid resistant steels)
Seal:	EPDM, NBR, Silicone, Viton or others
Standardized elements:	galvanized, A2, A4



Dismantling joint typ MV-KPU/FG2



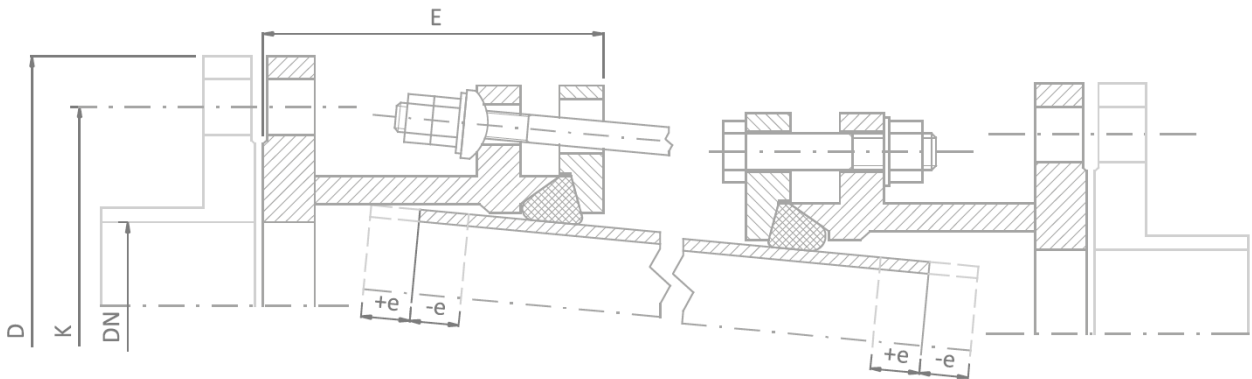
PN-EN 1092-1

Design dimensions based on PN10

DN [mm]	Head length E [mm]	Axial compensation e +/- [mm]	Outside diameter D [mm]	Pitch circle diameter K [mm]	Number of connection holes [pcs]	Connection holes diameter [mm]	Head weight [kg/pc]	Pipe weight [kg/lm]
50	140	70	165	125	4	18	9,5	4
65	140	70	185	145	4	18	10,5	5,5
80	140	70	200	160	8	18	13	7
100	140	70	220	180	8	18	17	9,5
125	140	70	250	210	8	18	20	13
150	140	70	285	240	8	23	27	17
200	140	90	340	295	8	23	37	31
250	180	90	395	350	12	23	49	41
300	180	90	445	400	12	23	58	56
350	180	90	505	460	16	23	65	68
400	180	90	565	515	16	27	76	100
450	180	90	615	565	20	27	82	120
500	180	90	670	620	20	27	94	145
600	200	110	780	725	20	30	130	155
700	200	110	895	840	24	30	165	175
800	200	110	1015	950	24	33	220	240
900	200	110	1115	1050	28	33	260	272
1000	200	110	1230	1160	28	36	320	300
1200	250	140	1455	1380	32	39	505	450
1400	250	140	1675	1590	36	42	680	630
1600	250	140	1915	1820	40	42	890	715
1800	250	140	2115	1820	40	48	980	795

Other versions available on special order

Dismantling joint typ MV-KPU/FG2



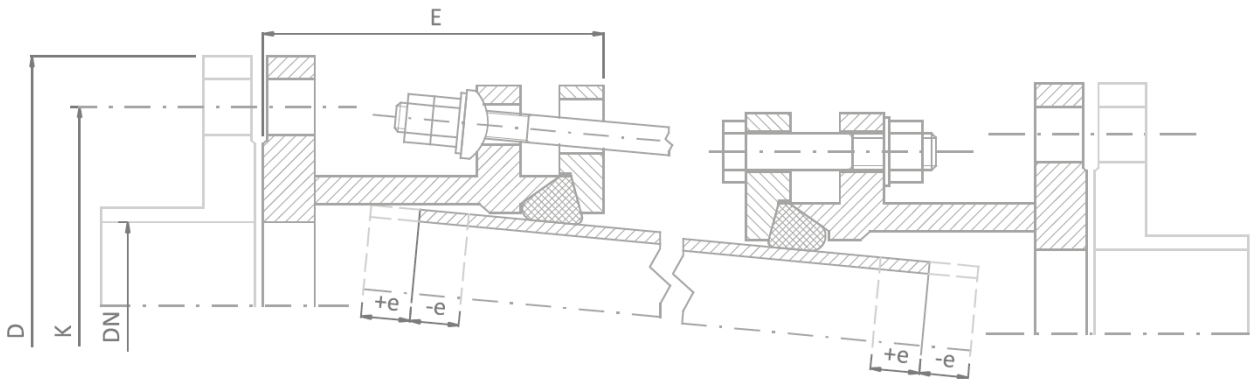
PN-EN 1092-1

Design dimensions based on PN16

DN [mm]	Head length E [mm]	Axial compensation e +/- [mm]	Outside diameter D [mm]	Pitch circle diameter K [mm]	Number of connection holes [pcs]	Connection holes diameter [mm]	Head weight [kg/pc]	Pipe weight [kg/lm]
50	140	70	165	125	4	18	9,5	4
65	140	70	185	145	4	18	10,5	5,5
80	140	70	200	160	8	18	13	7
100	140	70	220	180	8	18	17	9
125	140	70	250	210	8	18	20	13
150	140	70	285	240	8	23	27	17
200	140	90	340	295	12	23	37	30
250	180	90	405	355	12	27	54	40
300	180	90	460	410	12	27	69	55
350	180	90	520	470	16	27	84	68
400	180	90	580	525	16	30	103	100
450	180	90	640	585	20	30	124	118
500	180	90	715	650	20	33	143	142
600	250	110	840	770	20	36	213	165
700	250	110	910	840	24	36	263	185
800	250	110	1025	950	24	39	321	240
900	250	110	1125	1050	28	39	390	270
1000	250	110	1255	1170	28	42	487	295
1200	300	140	1485	1390	32	48	810	446
1400	300	140	1685	1590	36	48	1000	625

Other versions available on special order

Dismantling joint typ MV-KPU/FG2



PN-EN 1092-1

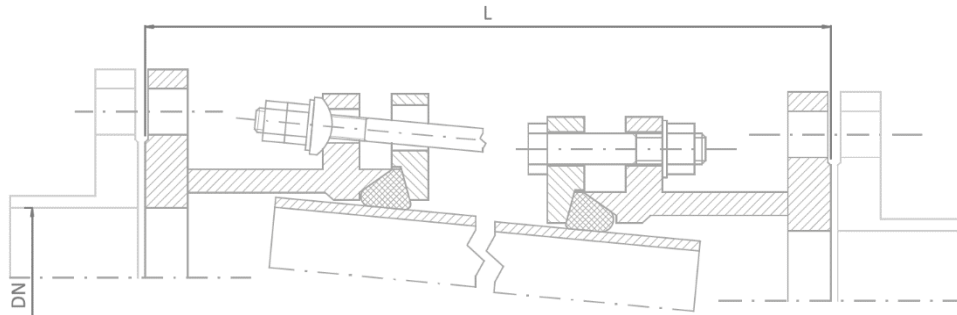
Design dimensions based on PN25

DN [mm]	Head length E [mm]	Axial compensation e +/- [mm]	Outside diameter D [mm]	Pitch circle diameter K [mm]	Number of connection holes [pcs]	Connection holes diameter [mm]	Head weight [kg/pc]	Pipe weight [kg/lm]
50	140	70	165	125	4	18	12	4,5
65	140	70	185	145	4	18	14	6,5
80	140	70	200	160	8	18	16	7,5
100	140	70	235	190	8	23	20	10
125	180	70	270	220	8	27	27	14
150	180	70	300	250	8	27	36	21
200	180	70	360	310	12	30	50	33
250	200	90	425	370	12	30	73	40
300	200	90	485	430	12	33	90	62
350	250	90	555	490	16	36	132	88
400	250	90	620	550	16	36	155	111
500	250	90	730	660	20	36	220	190
600	250	110	845	770	20	39	315	230
700	250	110	960	875	24	42	425	315
800	300	110	1085	990	24	48	570	400
900	300	110	1185	1090	28	48	699	450
1000	300	110	1320	1210	28	55	947	545

Other versions available on special order



Dismantling joint typ MV-KPU/FG2 Order form



Material*:

1. Carbon steel (S235JR/S355JR or others), with one of available coatings: epoxy/bitumen/galvanized
2. Stainless steel and acid resistant steel (1.4301/1.4541/1.4571 or others)

Standardized elements*:

Galvanized/A2/A4

Seal*:

EPDM/NBR/Silikon/Viton

Dimensions:

Nominal diameter DN =
Face to face length** L =

* delete as appropriate, other versions available on special order

** only in the case of non-standard variants

REMARKS:

.....
.....
.....
.....
.....
.....



multivalve

Multivalve Sp. z o.o.
44-109 Gliwice, ul. Eiffel'a 6
tel. + 48 32 661 00 00
fax: + 48 32 661 00 01
multivalve@multivalve.pl
www.multivalve.pl

TÜV Rheinland certified
ISO 9001 - 2008