

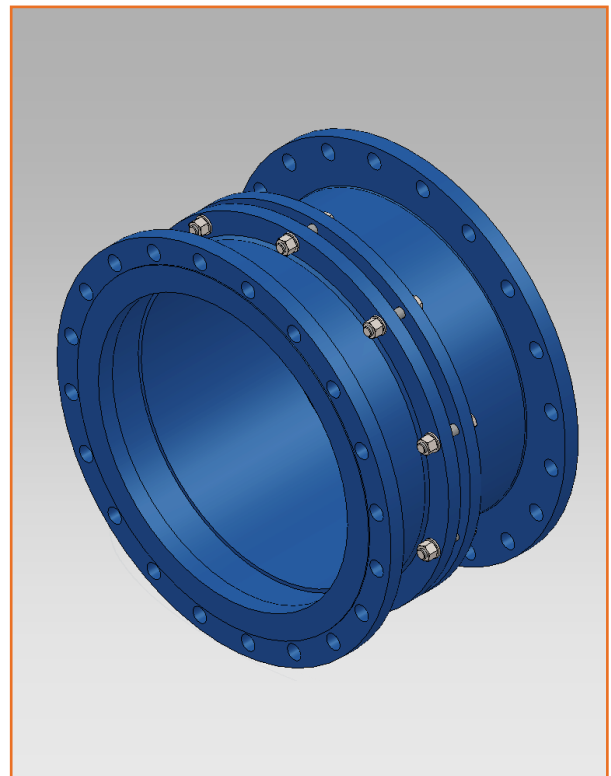


DISMANTLING JOINT TYP MV-KLL/L2

- dismantling joint with axial mounting clearance, applied for installing and removing various types of shut-off and regulating valves,
- possibility of customising face to face length and flange connections,
- dismantling joint is intended for operation with air, gas, drinking water, process water, sewage and other media,
- all stainless steel elements undergo etching and passivation by dipping or spraying,
- dismantling joint MV-KLL/L2 is used in water supply management and waste-water treatment, power generation, mining, chemical, petrochemical, metallurgical, cement and paper industries.

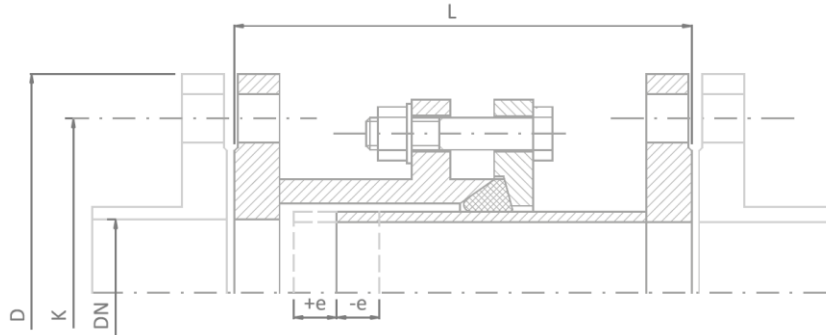
TECHNICAL DATA

Flange drilling:	PN 2,5, PN 6, PN 10, PN 16, PN 25 or others
Nominal diameter:	DN 50 to DN 2400. customised diameters and diameters above DN 2400 made to special orders
Material:	carbon steels, stainless steels, acid resistant steels or others
Corrosion protection:	primer painting, epoxy/bitumen, coating, zinc plating or hot dip galvanization, etching and passivation (stainless and acid resistant steels)
Seal:	EPDM, NBR, Silicone, Viton or others
Standardized elements:	galvanized, A2, A4





Dismantling joint typ MV-KLL/L2



PN-EN 1092-1

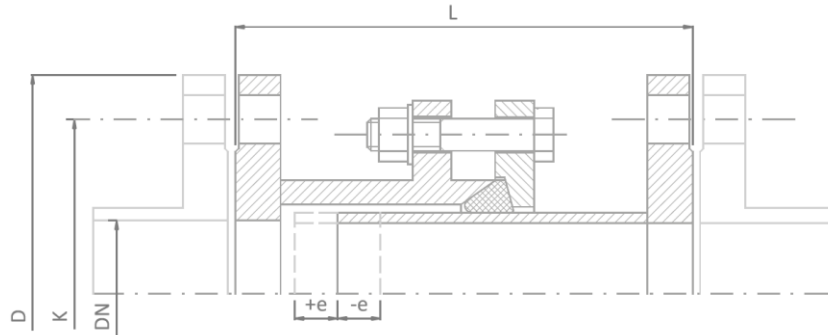
Design dimensions based on PN10

DN [mm]	Face to face L [mm]	Mounting clearance e +/- [mm]	Outside diameter D [mm]	Pitch circle diameter K [mm]	Number of connection holes [pcs.]	Connection holes diameter [mm]	Weight [kg]
50	300	40	165	125	4	18	12
65	300	40	185	145	4	18	14
80	300	40	200	160	8	18	16
100	300	40	220	180	8	18	21
125	300	40	250	210	8	18	26
150	300	40	285	240	8	23	32
200	300	40	340	295	8	23	46
250	350	50	395	350	12	23	69
300	350	50	445	400	12	23	83
350	350	50	505	460	16	23	98
400	380	50	565	515	16	27	122
450	380	50	615	565	20	27	128
500	380	50	670	620	20	27	147
600	380	50	780	725	20	30	195
700	380	50	895	840	24	30	244
800	380	50	1015	950	24	33	304
900	380	50	1115	1050	28	33	348
1000	380	50	1230	1160	28	36	403
1200	400	50	1455	1380	32	39	616
1400	400	50	1675	1590	36	42	820
1600	400	50	1915	1820	40	42	1155
1800	400	50	2115	1820	40	48	1320
2000	400	50	2325	1820	40	48	1740

Other versions available on special order



Dismantling joint typ MV-KLL/L2



PN-EN 1092-1

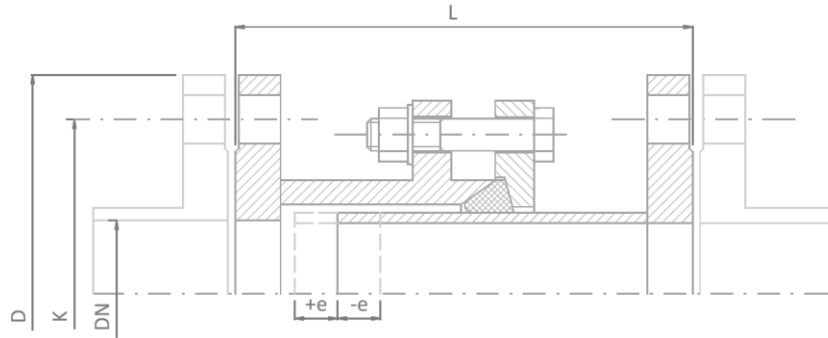
Design dimensions based on PN16

DN [mm]	Face to face L [mm]	Mounting clearance e +/- [mm]	Outside diameter D [mm]	Pitch circle diameter K [mm]	Number of connection holes [pcs.]	Connection holes diameter [mm]	Weight [kg]
50	300	40	165	125	4	18	12
65	300	40	185	145	4	18	14
80	300	40	200	160	8	18	16
100	300	40	220	180	8	18	20
125	300	40	250	210	8	18	26
150	300	40	285	240	8	23	32
175	300	40	315	270	8	23	40
200	300	40	340	295	12	23	48
250	350	50	405	355	12	27	70
300	350	50	460	410	12	27	90
350	350	50	520	470	16	27	105
400	380	50	580	525	16	30	140
450	380	50	640	585	20	30	150
500	380	50	715	650	20	33	170
600	380	50	840	770	20	36	245
700	390	50	910	840	24	36	375
800	390	50	1025	1050	24	39	440
900	390	50	1125	1050	28	39	505
1000	390	50	1255	1170	28	42	570
1200	400	50	1485	1390	32	48	710
1400	400	50	1685	1590	36	48	910

Other versions available on special order



Dismantling joint typ MV-KLL/L2



PN-EN 1092-1

Design dimensions based on PN25

DN [mm]	Face to face L [mm]	Mounting clearance e +/- [mm]	Outside diameter D [mm]	Pitch circle diameter K [mm]	Number of connection holes [pcs.]	Connection holes diameter [mm]	Weight [kg]
50	300	40	165	125	4	18	13
65	300	40	185	145	4	18	16
80	300	40	200	160	8	18	19
100	300	40	235	190	8	23	25
125	320	40	270	220	8	27	32
150	320	40	300	250	8	27	40
200	320	40	360	310	12	30	57
250	390	50	425	370	12	30	93
300	390	50	485	430	12	33	117
350	390	50	555	490	16	36	154
400	420	50	620	550	16	36	180
500	420	50	730	660	20	36	256
600	420	50	845	770	20	39	333
700	420	50	960	875	24	42	417
800	420	50	1085	990	24	48	541
900	470	50	1185	1090	28	48	644
1000	470	50	1320	1210	28	55	718

Other versions available on special order



multivalve

Multivalve Sp. z o.o.
44-109 Gliwice, ul. Eiffel'a 6
tel. + 48 32 661 00 00
fax: + 48 32 661 00 01
multivalve@multivalve.pl
www.multivalve.pl

TÜV Rheinland certified
ISO 9001 - 2008