

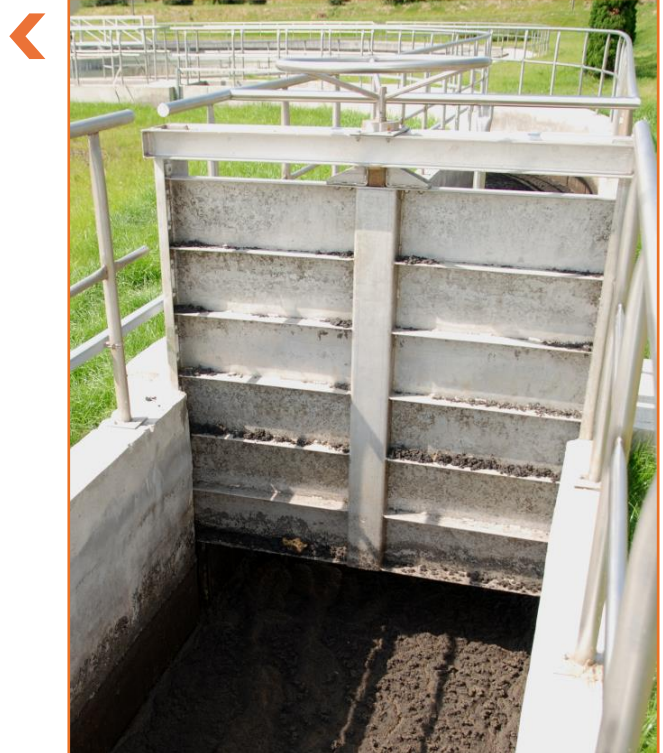


➤ CHANNEL PENSTOCK TYPE MV-ZK

- channel penstocks are used for shutting off or adjusting the flow in channels with drinking water, waste water, cooling water, river water etc.,
- installation in open channels; mounting in grooves or bolting inside the channel,
- FEM-aided individual structural calculations performed for specific operational parameters and places of installation,
- all stainless steel elements undergo etching and passivation by dipping or spraying,
- actuator is mounted directly on the frame of the penstock and provides trilateral leaktightness in both flow directions,
- penstocks are pressure tested in the factory.

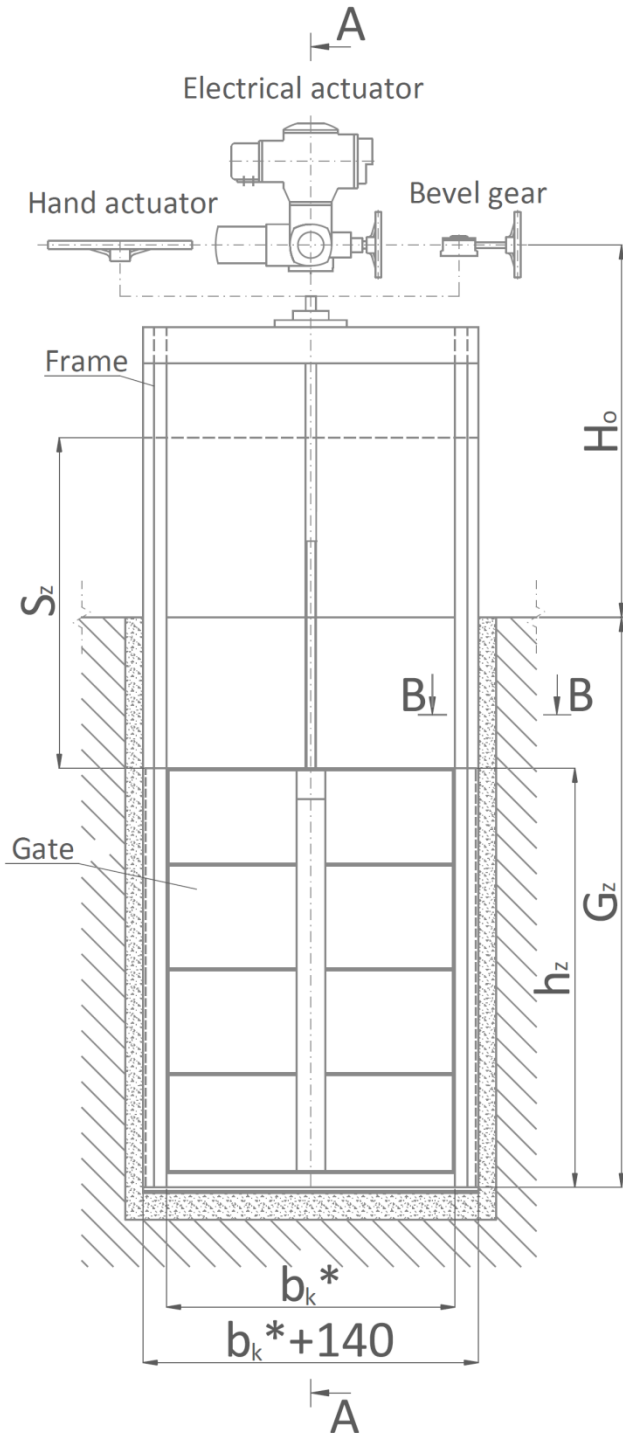
TECHNICAL DATA

Work pressure:	up to the top of the gate (tightness based on PN-EN 12266-2, table A.5, tightness class C, DIN 19569-4 tightness class 3)
Penstock width: [mm]	150 to 4000, penstocks of widths exceeding 4000 are made to special orders
Gate height: [mm]	150 to 4000, penstocks of gate heights exceeding 4000 are made to special orders
Material:	1.4301, 1.4541, 1.4571, Duplex, etc.
Actuator:	electric, pneumatic, hand actuator, bevel gear
Seal:	EPDM, NBR, Viton or others

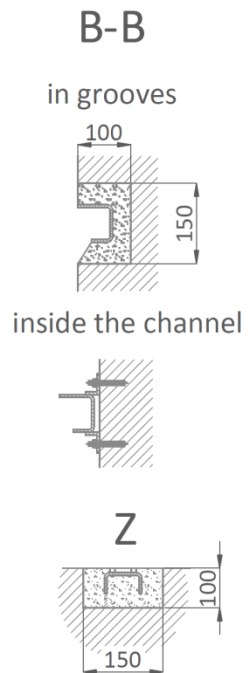
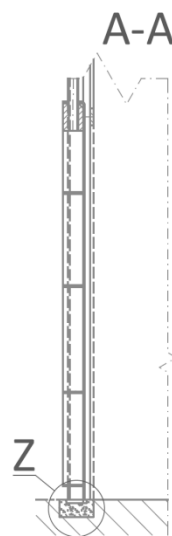


Penstock type MV-ZK

Channel penstock with a frame extended to the operating level

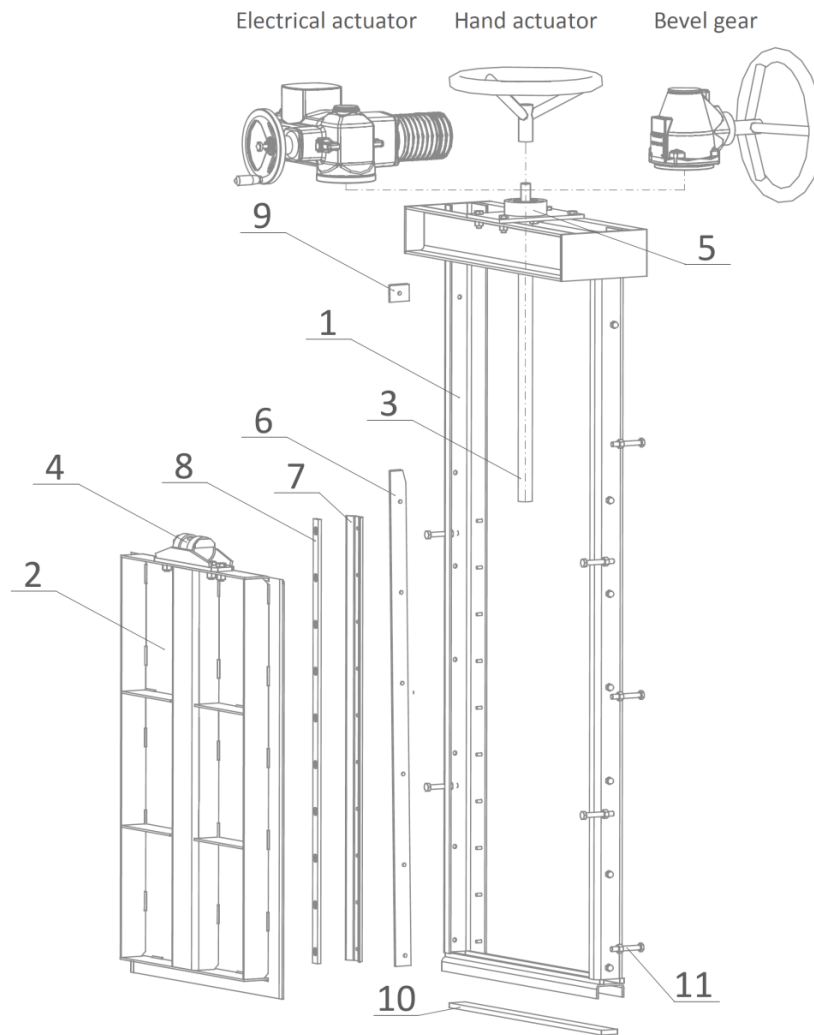


- Channel width $b_k = \dots\dots\dots$
- Channel height $h_z = \dots\dots\dots$
- Depth $G_z = \dots\dots\dots$
- Scope $S_z = \dots\dots\dots$
- Frame height from operating level $H_0 = \dots\dots\dots$
- Actuator: $\dots\dots\dots$
- Seal*:
EPDM/NBR/Viton
- Mounting solution*:
grooves/inside the channel
- * delete as appropriate



* For a grooveless penstock mounting the channel width is reduced by at least 180 mm

Penstock typ MV-ZK



No.	Element	Material*
1	Welded frame	1.4301, 1.4541, 1.4571, Duplex, etc.
2	Gate	1.4301, 1.4541, 1.4571, Duplex, etc.
3	Stem	1.4301, 1.4541, 1.4571, etc.
4	Stem nut	Self-lubricating brass Rg7
5	Ball bearings	Stainless steel
6	Sliders	POM-C or PTFE,
7	Seal	EPDM, NBR, Viton
8	Holdfast seals	1.4301, 1.4541, 1.4571, Duplex, etc.
9	Bumper	POM-C or PTFE
10	Lower seal	EPDM, NBR, Viton
11	Adjust bolts	A2, A4

* Delete as appropriate. Other versions available on special order



multivalve

Multivalve Sp. z o.o.
44-109 Gliwice, ul. Eiffel'a 6
tel. + 48 32 661 00 00
fax: + 48 32 661 00 01
multivalve@multivalve.pl
www.multivalve.pl

TÜV Rheinland certified
ISO 9001 - 2008