

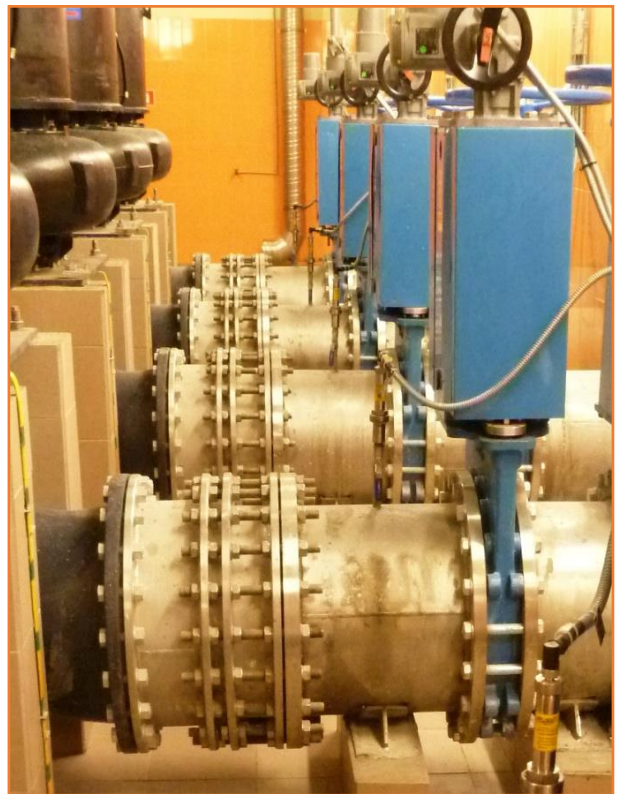


## DISMANTLING JOINT TYP MV-KC/F4

- dismantling joint with axial mounting clearance, applied for installing and removing various types of shut-off and regulating valves,
- possibility of customising face to face length and flange connections,
- dismantling joint is intended for operation with air, gas, drinking water, process water, sewage and other media,
- all stainless steel elements undergo etching and passivation by dipping or spraying,
- dismantling joint MV-KC/F4 is used in water supply management and waste-water treatment, power generation, mining, chemical, petrochemical, metallurgical, cement and paper industries.

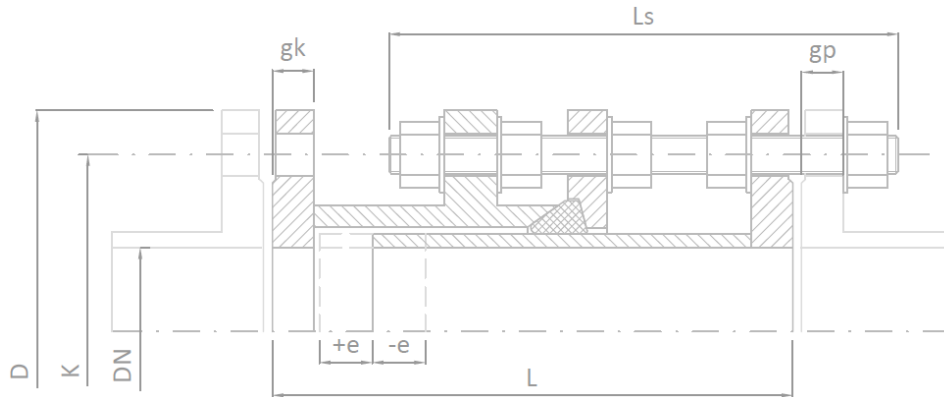
### TECHNICAL DATA

<b>Flange drilling:</b>	PN 2,5, PN 6, PN 10, PN 16, PN 25 or others
<b>Nominal diameter:</b>	DN 50 to DN 2400. customised diameters and diameters above DN 2400 made to special orders
<b>Material:</b>	carbon steels, stainless steels, acid resistant steels or others
<b>Corrosion protection:</b>	primer painting, epoxy/bitumen, coating, zinc plating or hot dip galvanization, etching and passivation (stainless and acid resistant steels)
<b>Seal:</b>	EPDM , NBR, Silicone, Viton or others
<b>Standardized elements:</b>	galvanized, A2, A4





## Dismantling joint typ MV-KC/F4



PN-EN 1092-1

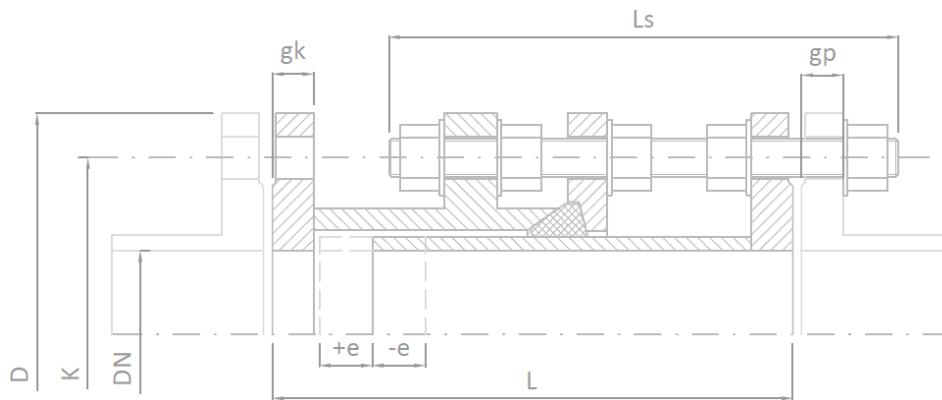
Design dimensions based on PN10

DN [mm]	Face to face L [mm]	Mounting clearance e +/- [mm]	Outside diameter D [mm]	Pitch circle diameter K [mm]	Number of threaded rods [pcs.]	Size of threaded rods [mm]	Length of threaded rods Ls [mm]	Counter flange thickness gp [mm]*	Connection flange thickness gk [mm]	Weight [kg]
50	300	25	165	125	4	M16	260	18	18	15
65	300	25	185	145	8	M16	260	18	18	18
80	300	25	200	160	8	M16	260	20	20	23
100	300	25	220	180	8	M16	260	20	20	28
125	300	25	250	210	8	M16	260	22	22	34
150	350	25	285	240	8	M20	320	22	22	48
200	350	25	340	295	8	M20	320	24	24	60
250	350	25	395	350	12	M20	320	26	26	81
300	350	25	445	400	12	M20	320	26	26	95
350	350	25	505	460	16	M20	320	26	26	121
400	375	25	565	515	16	M24	330	26	26	155
450	375	25	615	565	20	M24	330	28	28	172
500	375	25	670	620	20	M24	330	28	28	200
600	400	25	780	725	20	M27	370	30	28	268
700	400	25	895	840	24	M27	370	35	30	335
800	450	25	1015	950	24	M30	380	38	32	457
900	450	25	1115	1050	28	M30	390	38	34	530
1000	475	25	1230	1160	28	M33	420	44	34	642
1200	525	25	1455	1380	32	M36	420	55	38	850
1400	550	25	1675	1590	36	M39	440	65	42	1309
1600	600	25	1915	1820	40	M45	480	75	46	1895
1800	650	25	2115	2020	36	M45	500	85	50	2305
2000	700	25	2325	2230	40	M45	540	90	54	2800
2200	700	25	2550	2440	36	M52	560	100	58	3488
2400	700	25	2760	2650	40	M52	600	110	62	4088

\*CAUTION! Counter flange thickness verification required! Other versions available on special order



## Dismantling joint typ MV-KC/F4



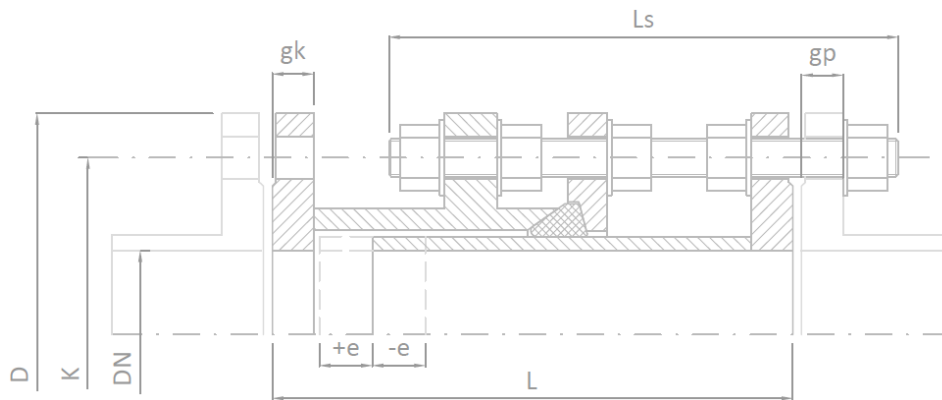
PN-EN 1092-1

Design dimensions based on PN16

DN [mm]	Face to face L [mm]	Mounting clearance e +/- [mm]	Outside diameter D [mm]	Pitch circle diameter K [mm]	Number of threaded rods [pcs.]	Size of threaded rods [mm]	Length of threaded rods Ls [mm]	Counter flange thickness gp [mm]*	Connection flange thickness gk [mm]	Weight [kg]
50	300	25	165	125	4	M16	250	18	18	14
65	300	25	185	145	4	M16	250	18	18	19
80	300	25	200	160	8	M16	260	20	20	25
100	300	25	220	180	8	M16	260	20	20	28
125	300	25	250	210	8	M16	260	22	22	35
150	350	25	285	240	8	M20	320	22	22	47
200	350	25	340	295	12	M20	320	24	24	64
250	375	25	405	355	12	M24	330	26	26	95
300	375	25	460	410	12	M24	330	28	28	117
350	425	25	520	470	16	M24	370	30	30	162
400	425	25	580	525	16	M27	370	32	32	204
450	425	25	640	585	20	M27	370	34	34	232
500	450	25	715	650	20	M30	370	36	36	306
600	475	25	840	770	20	M33	420	40	36	425
700	475	25	910	840	24	M33	440	40	36	465
800	525	25	1025	950	24	M36	480	41	38	586
900	525	25	1125	1050	28	M36	510	48	40	692
1000	550	25	1255	1170	28	M39	510	59	42	888
1200	600	25	1485	1390	32	M45	550	78	48	1395
1400	625	25	1685	1590	36	M45	550	84	52	1675

\*CAUTION! Counter flange thickness verification required!  
Other versions available on special order

## Dismantling joint typ MV-KC/F4



PN-EN 1092-1

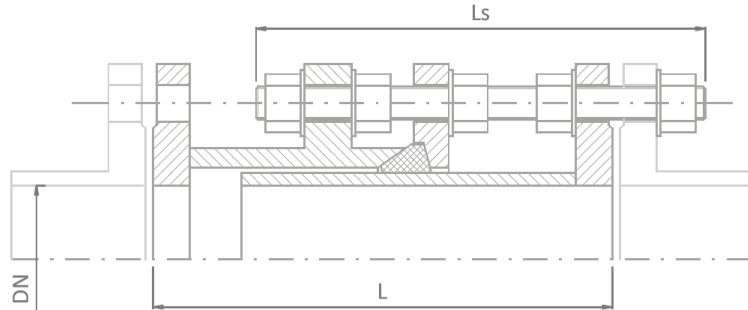
Design dimensions based on PN25

DN [mm]	Face to face L [mm]	Mounting clearance e +/- [mm]	Outside diameter D [mm]	Pitch circle diameter K [mm]	Number of threaded rods [pcs.]	Size of threaded rods [mm]	Length of threaded rods Ls [mm]	Counter flange thickness gp [mm]*	Connection flange thickness gk [mm]	Weight [kg]
200	375	25	360	310	12	M24	320	30	30	96
250	425	25	425	370	12	M27	350	32	32	141
300	425	25	485	430	16	M27	350	34	34	170
350	450	25	555	490	16	M30	380	38	38	246
400	500	25	620	550	16	M33	420	40	40	321
450	525	25	670	600	20	M33	420	46	46	380
500	525	25	730	660	20	M33	420	48	48	444
600	550	25	845	770	20	M36	450	48	48	570
700	600	25	960	875	24	M39	470	50	50	750
800	625	25	1085	990	24	M45	510	53	50	1022
900	625	25	1185	1090	28	M45	510	57	54	1160
1000	675	25	1320	1210	28	M52	550	63	58	1560

\*CAUTION! Counter flange thickness verification required!  
Other versions available on special order



## Dismantling joint typ MV-KC/F4 Order form



Material\*:

1. Carbon steel (S235JR/S355JR or other), with one of available coatings: epoxy/bitumen/galvanized
2. Stainless steel and acid resistant steel (1.4301/1.4541/1.4571 or other)

Standardized elements\*:

Galvanized/A2/A4

Seal\*:

EPDM/NBR/Silikon/Viton

Dimensions:

Nominal diameter                      DN = .....  
Face to face length\*\*                L = .....  
Length of threaded rods\*\*            Ls = .....

\* delete as appropriate, other versions available on special order

\*\* only in the case of non-standard variants

REMARKS:

.....  
.....  
.....  
.....  
.....  
.....



**multivalve**

Multivalve Sp. z o.o.  
44-109 Gliwice, ul. Eiffel'a 6  
tel. + 48 32 661 00 00  
fax: + 48 32 661 00 01  
multivalve@multivalve.pl  
www.multivalve.pl

TÜV Rheinland certified  
**ISO 9001 - 2008**