



DISMANTLING JOINT TYP MV-FF/WD

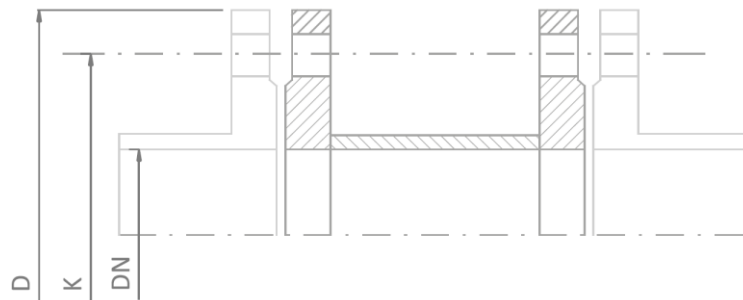
- dismantling joint is used for determining distances between individual elements of the installation,
- possibility of customising face to face length and flange connections as well as of implementing flanges having various diameters and drillings,
- dismantling joint is intended for operation with air, gas, drinking water, process water, sewage and other media,
- all stainless steel elements undergo etching and passivation by dipping or spraying,
- dismantling joint MV-FF/WD is used in water supply management and waste-water treatment, power generation, mining, chemical, petrochemical, metallurgical, cement and paper industries.

TECHNICAL DATA

Flange drilling:	PN 2,5, PN 6, PN 10, PN 16, PN 25 or others
Nominal diameter:	DN 50 - DN 2000, customised diameters and diameters above DN 2000 made to special orders
Material:	carbon steels, stainless steels, acid resistant steels etc.
Anticorrosive protection:	primer painting, epoxy/bitumen, coating, zinc plating or hot dip galvanization, etching and passivation (stainless and acid resistant steels)



Dismantling joint typ MV-FF/WD



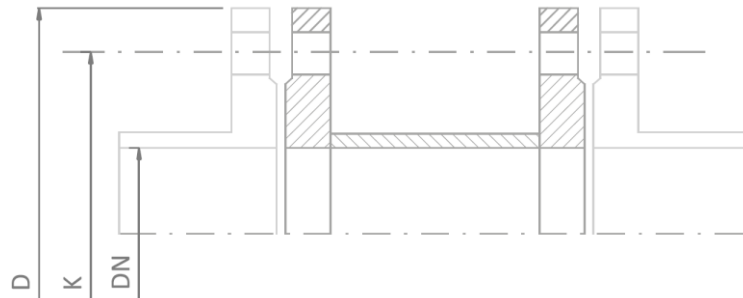
PN-EN 1092-1

Design dimensions based on PN10

DN [mm]	Outside diameter D [mm]	Pitch circle diameter K [mm]	Number of holes [pcs.]	Connection hole diameter [mm]
50	165	125	4	18
65	185	145	8	18
80	200	160	8	18
100	220	180	8	18
125	250	210	8	18
150	285	240	8	23
200	340	295	8	23
250	395	350	12	23
300	445	400	12	23
350	505	460	16	23
400	565	515	16	27
450	615	565	20	27
500	670	620	20	27
600	780	725	20	30
700	895	840	24	30
800	1015	950	24	33
900	1115	1050	28	33
1000	1230	1160	28	36
1200	1455	1380	32	39
1400	1675	1590	36	42
1600	1915	1820	40	48
1800	2115	2020	44	48
2000	2325	2230	48	48

Other versions available on special order

Dismantling joint typ MV-FF/WD



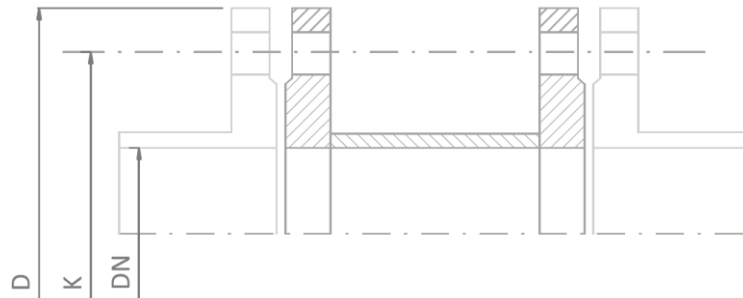
PN-EN 1092-1

Design dimensions based on PN16

DN [mm]	Outside diameter D [mm]	Pitch circle diameter K [mm]	Number of holes [pcs.]	Connection hole diameter [mm]
50	165	125	4	18
65	185	145	4	18
80	200	160	8	18
100	220	180	8	18
125	250	210	8	18
150	285	240	8	22
200	340	295	12	22
250	405	355	12	26
300	460	410	12	26
350	520	470	16	26
400	580	525	16	30
450	640	585	20	30
500	715	650	20	33
600	840	770	20	36
700	910	840	24	36
800	1025	950	24	39
900	1125	1050	28	39
1000	1255	1170	28	42
1200	1485	1390	32	48
1400	1685	1590	36	48

Other versions available on special order

Dismantling joint typ MV-FF/WD



PN-EN 1092-1

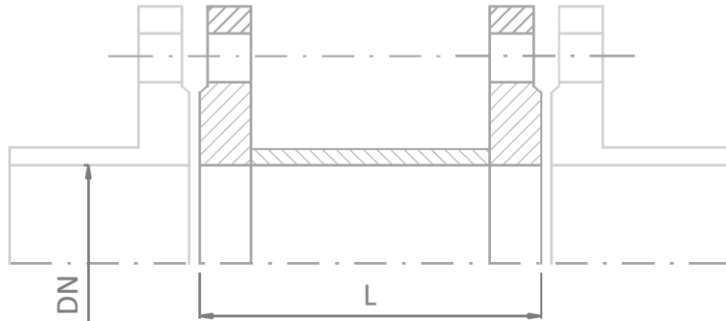
Design dimensions based on PN25

DN [mm]	Outside diameter D [mm]	Pitch circle diameter K [mm]	Number of holes [pcs.]	Connection hole diameter [mm]
200	360	310	12	26
250	425	370	12	30
300	485	430	16	30
350	555	490	16	33
400	620	550	16	36
450	670	600	20	36
500	730	660	20	36
600	845	770	20	39
700	960	875	24	42
800	1085	990	24	48
900	1185	1090	28	48
1000	1320	1210	28	56
1200	1530	1420	32	56
1400	1755	1640	36	62

Other versions available on special order



Dismantling joint typ MV-FF/WD Order form



Material*:

1. Carbon steel (S235JR/S355JR) with one of available coatings:
epoxy/bitumen/galvanized
2. Stainless steel and acid resistant steel
(1.4301/1.4541/1.4571 or others)

Dimensions:

Nominal diameter DN =
Face to face length** L =

*delete as appropriate

** only in the case of non-standard variants

REMARKS:

.....
.....
.....
.....
.....
.....
.....



multivalve

Multivalve Sp. z o.o.
44-109 Gliwice, ul. Eiffel'a 6
tel. + 48 32 661 00 00
fax: + 48 32 661 00 01
multivalve@multivalve.pl
www.multivalve.pl

TÜV Rheinland certified
ISO 9001 - 2008