

A close-up photograph of a CNC machine's tool bit cutting into a metal workpiece. The scene is bathed in a purple and blue light, creating a high-tech, industrial atmosphere. The tool bit is positioned centrally, with a small chip of metal being removed. The background shows the complex, multi-faceted structure of the metal part being machined.

# **COMPANY OVERVIEW**

# About us

- Founded in **2003**
- Located in **Nova vas pri Markovcih 114**, Slovenia
- **93** employees
- Main activity is **CNC processing** of various materials and **assembly of complex products**
- Side activities are **construction, 3D modeling and planning production process**
- Production series from **1 to 10.000** pcs.
- **99%** Export in EU (Germany, Austria, Swiss, Lichtenstein,...)

# Fields of supplying

**01** Painting  
industry

---

**02** Wood  
processing  
industry

---

**03** Vacuum  
industry

---

**04** Defense  
industry

---

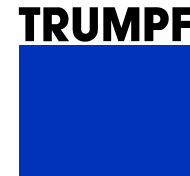
**05** Aerospace

---

**06** EUV &  
semiconductor

---

# Some references



# Main activities



---

## Mechanical processing

Various techniques  
and various materials  
Producing key elements for  
customer machines, devices...



---

## Assembly

Partial assembly and  
full assembly

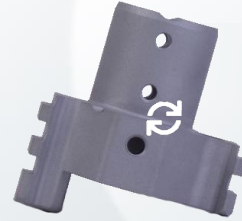


---

## Measurement and testing

Conventional measuring and  
advanced measuring and  
testing

# 360° PRODUCT GALLERY



# Mechanical processing of materials

Processing various materials with CNC machines



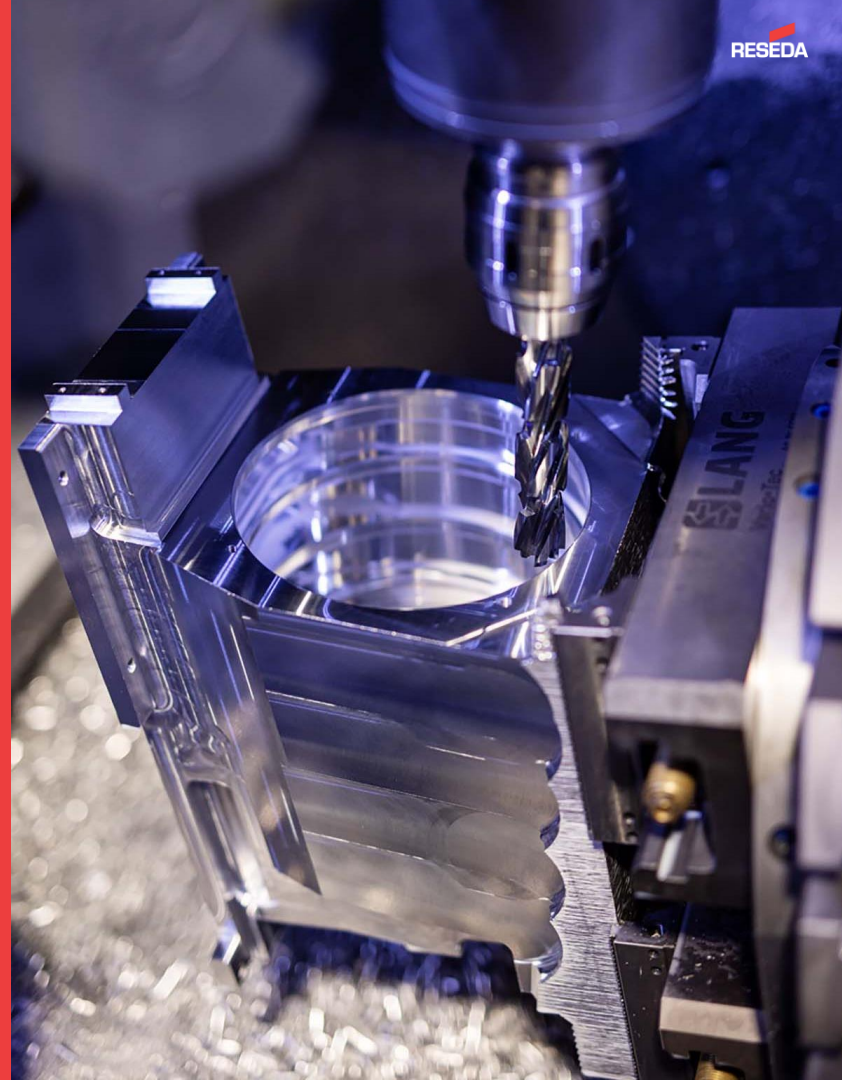


# CNC Turning (25 CNC Lathes)

- Up to 400 mm diameter
- Up to 800 mm length
- Bar feeders for 3 m bars up to 42 mm diameter
- Automated tending with robot
- Driven tools
- Y-axis

# CNC Milling (28 CNC Mills)

- Max size of part L 1200 mm x H 580 mm x W 500 mm (3 AX)
- Max size of part  $\Phi 550$  x H 400 mm (5 AX)
- Automated tending with robot





# Grinding

- Parallel grinding (in-house)
- Cylindrical outside grinding (ext)
- Cylindrical inside grinding (ext)

# Slotting

- Outside diameter
- Inside diameter

# CNC Cutting

- Outside diameter up to 400 mm

**Lapping**

**Wire erosion**

**Sinker erosion**

**Balancing**

**Laser engraving**

**Laser cutting (ext)**

**Bending (ext)**

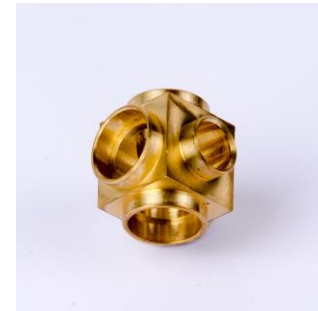
**Welding (ext)**

**Water cutting (ext)**



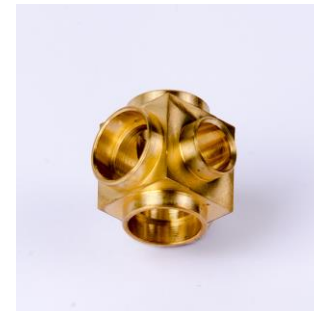
# Surface treatment (ext)

- Galvanization
- Nickel electroplating
- Electroless nickel plating
- Anodizing
- Hard anodizing
- Carbonitrating
- Hardening
- Tempering
- Bluing
- Polishing
- Electropolishing
- Alodine
- Painting



# QM, measuring, testing

- 4 CMM machines (Zeiss, Tesa)
- 1 manual measuring machine
- Profile projector
- Surface roughness tester
- Hardness tester
- Hydraulic and pneumatic system testing
- Electric system testing
- Material certificate assurance
- Spectrometer





# Assembly

- Very complex assembly (500 single-parts in one assembly)
- **800 m<sup>2</sup>** of assembly space
- **150 m<sup>2</sup>** of storage space on shelves for assembly parts
- Partial assembly
- Final assembly
- Assembly consisting of:
  - Machined parts
  - Standard components
  - Electrical components
  - Pneumatic components
  - Hydraulic components
- Testing of functionality

# Packaging and logistics

- 350 m<sup>2</sup> on shelves for parts on stock
- Packaging types:
  - Carton
  - Bubble wrap
  - Foam
  - VCI bags, foil (rust prevention)
- Ultrasonic cleaning of parts
- Own transport with van (dimensions 2,5 m x 1,4 m x 1,65 m, max 1500 kg)
- Shipping with DHL, DACHSER,...

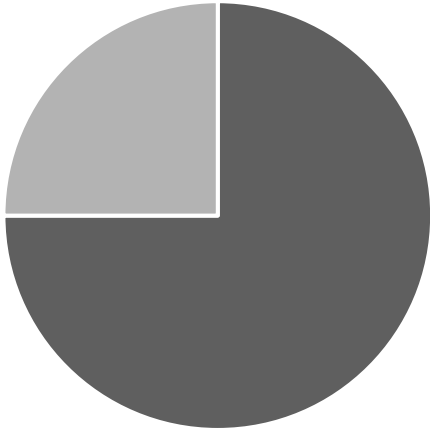




# IT support of production

- **Digital exchange** of technical documentation
- **LAN transfer** of data to machines
- Following precise customer measurements and fulfilling protocols
- Fast and flexible
- Digital **bill of material** for every product
- **Automatic** reporting and ordering
- Control plan

# Financial aspects



High financial stability.  
Investment strategy from cash flow,  
only 20 - 30 % loans.

**2020** 4.1 M€

**2021** 7.0 M€

**2022** 9.6 M€

**2023** 8.2 M€

**2024** 8.6 M€

**plan 2025** 9.8 M€

# Certification



**ISO  
14001:2015**

Continuous provision of  
environmental safety.



**ISO  
9001:2015**

Continuous quality  
improvement.



**AAA**

Platinum certificate  
Creditworthiness Rating.



**EN  
9100:2018**

Aerospace Quality  
Management System.

# Growth potential

- Actual location at Nova vas pri Markovcih **Plant 1.**
- Actual location at Nova vas pri Markovcih **Plant 2.**

Together 5.500 m<sup>2</sup>.

Additional 2.500 m<sup>2</sup> of land.

- New location at Lancova vas.  
4.000 m<sup>2</sup> of land.  
Building activities running.  
Plan to be finished in Q3 2025.



# Contacts

Link to all contacts:

<https://www.reseda.si/contact/?lang=en>

Orders:

[orders@reseda.si](mailto:orders@reseda.si)

Invoices:

[invoices@reseda.si](mailto:invoices@reseda.si)



**Damjan Habjanec**

*DIRECTOR*

damjan.habjanec@reseda.si

+386 2 795 23 41



**Matej Bračič**

*ASSISTANT DIRECTOR*

matej.bracic@reseda.si

+386 2 795 23 55



**Mitja Rožmarin**

*TECHNICAL DIRECTOR*

mitja.rozmarin@reseda.si

+386 2 795 23 48



**Marko Murko**

*QM*

marko.murko@reseda.si

+386 2 795 23 49



**Vesna Stergar**

*HUMAN RESOURCES*

vesna.stergar@reseda.si

+386 2 795 23 40



**Petra Kolarič**

*ASSEMBLY*

montaza@reseda.si

+386 2 795 23 43



**Grega Knežar**

*BDM*

grega.knezar@reseda.si

+386 41 339 788



**Primož Korpar**

*IT*

primoz.korpar@reseda.si

+386 2 795 23 54



**Simona Bezjak**

*SALES*

simona.bezjak@reseda.si

+386 41 327 108



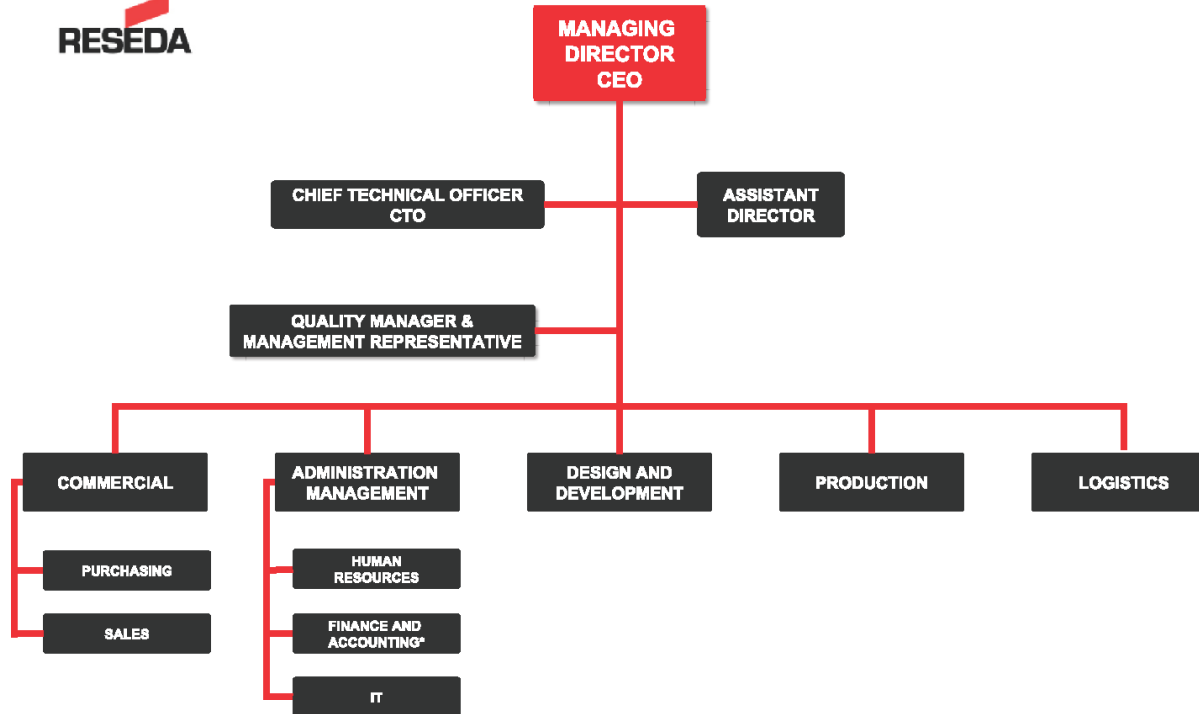
**Cvetka Koštomaj**

*PROCUREMENT*

cvetka.kostomaj@reseda.si

+386 41 488 975

# Organigram



\*not included in the QMS

**Thank you for attention!**

