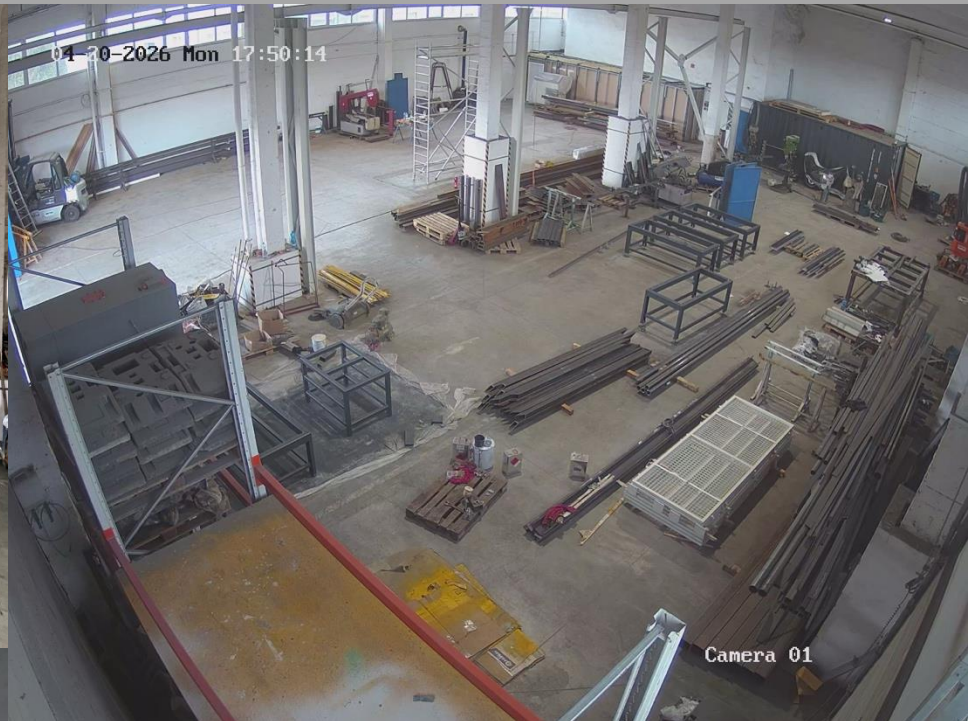


KONTECH

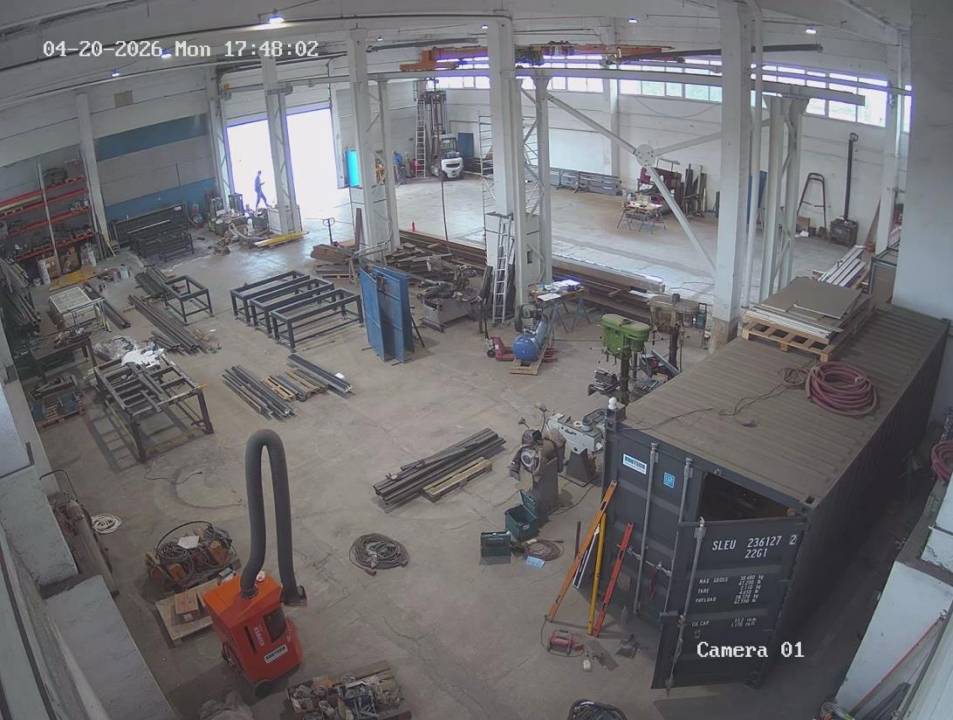
**DESIGN, PRODUCTION AND ASSEMBLY OF STEEL
STRUCTURES**

KONTECH - Subcontractor for steel structures and welded assemblies



Sawmill Bomar 610x440
Sawmill Bomar 275x230
Manual plasma Alfair 125A
Welding machines Lorch 500
Drill machines VS32

Bridge crane 3,2t
Forklift 3t
Maximum weight we can work with 6t



WHO WE ARE

Subcontractor for steel structures and welded assemblies

KONTECH is a manufacturing company specialized in subcontract production of steel structures and welded assemblies according to customer drawings and technical documentation. We focus on reliable, certified manufacturing for industrial and engineering partners across Europe.



WHAT WE DO

Our scope of manufacturing

Steel structures (EN 1090-2 EXC3)

Welded assemblies and frames

Subcontract manufacturing according to customer drawings

Small to medium production series



WHY COOPERATE WITH KONTECH

Key advantages

- Certified production: ISO 9001, EN ISO 3834, EN 1090-2, EXC3
- Experience with international subcontracting projects
- Flexible production capacities
- High accuracy, consistent quality, reliable delivery

CERTIFICATIONS

Certified and controlled production

- ISO 9001 – Quality Management System
- EN ISO 3834-2 – Welding quality requirements
- EN 1090-2:2018+A1:2024 – Steel structures execution class EXC3

REFERENCES

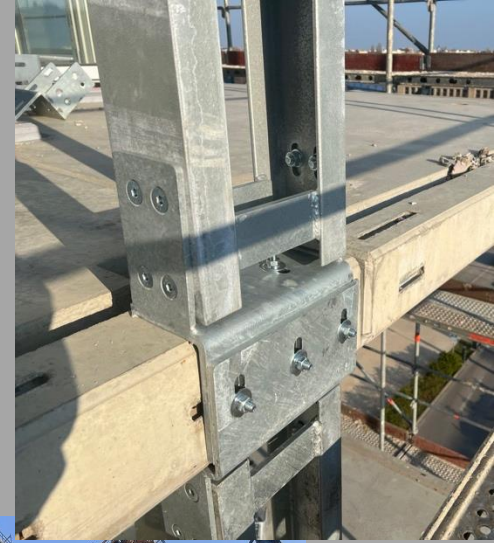
Project experience

Industrial and mechanical engineering projects

Steel structures for industrial facilities

Long-term subcontracting cooperation with European partners

(References available upon request)



MANUFACTURING CAPABILITIES

Production technologies

- Laser cutting of steel parts
- CNC bending
- MIG / MAG, TIG welding
- CNC machining (milling and turning)
- Surface finishing
coating according to EN ISO 12944
hot-dip galvanizing according to EN ISO 1461
- and assembly



QUALITY & COOPERATION APPROACH

How we work

Manufacturing strictly according to drawings and specifications

Incoming material and dimensional control

Welding and quality inspections

Clear communication and documentation

LONG-TERM COOPERATION

Partnership approach

We are interested in long-term subcontracting cooperation and framework agreements with companies.

We are ready to review your technical documentation and provide manufacturing feedback or quotations.

kon-tech, s.r.o.

Hvozdnica 298

013 56 Hvozdnica, Slovakia

Manufacturing address:

kon-tech, s.r.o.

Sidonie Sakalovej 88

014 01 Bytca, Slovakia

Area company AGIS-SK

Entrance behind the ORLEN gas station (by the tall chimney)

KONTECH

Peter Minarik - Founder

pm@kon-tech.sk, Mobil: +421 910 966 863

Peter Minarik, jr. - CEO

peter.minarik@kon-tech.sk, Mobil: +421 915 478 403

Dusan Krajci - CCO, Nederlandssprekend, English speaking

sales@kon-tech.sk, Mobil: +421 904 813 777

Katarina Minarikova, Deutsch sprechende

katarina.minarikova@kon-tech.sk, Mobil: +49 173 5467168

Vladimir Ivanic, di lingua Italiana

sales@kon-tech.sk, Mobil: +421 944 528 209