

BCT

**Precision in every cut -
excellence in every part**

- **Machined parts
for engineering industry
professionals**



Established in 1995.

Currently:

- Production facilities 3300 m²;
- 106 employees;
- 50 CNC machines operated in 2-3 shifts;
- 6 Han's Co-Bot arms;
- 700+ unique drawings per month;



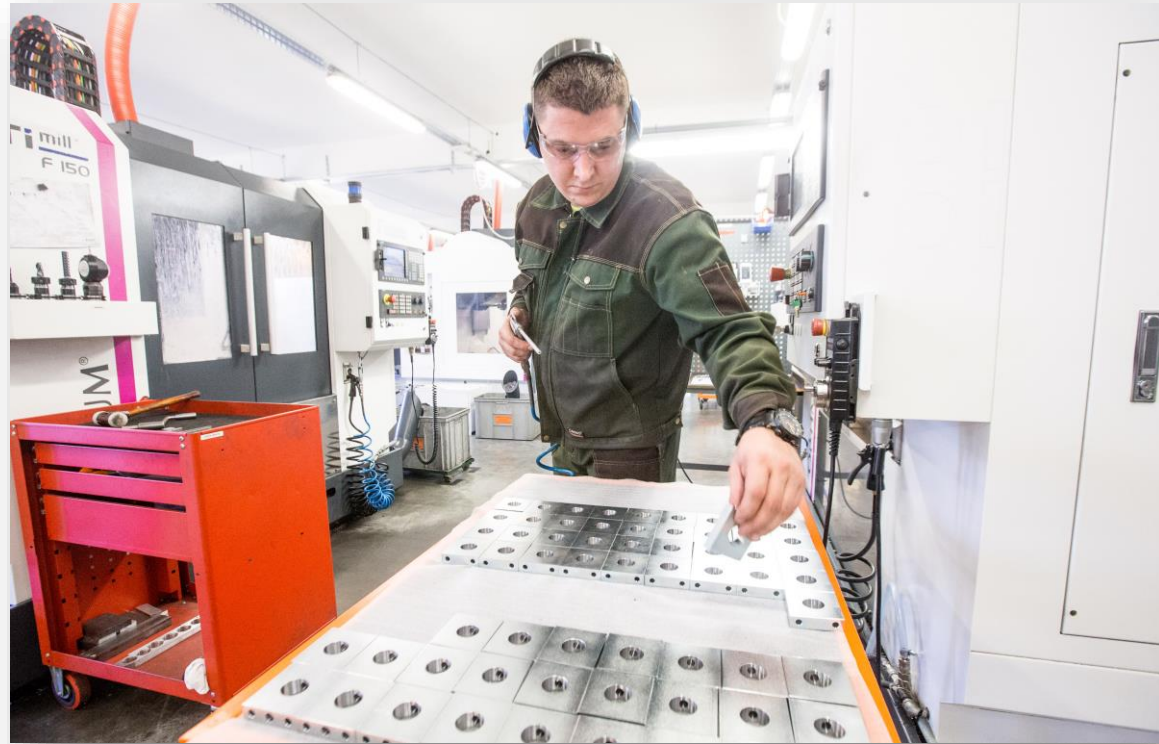
Our strenghts

High delivery precision

Excellent communication

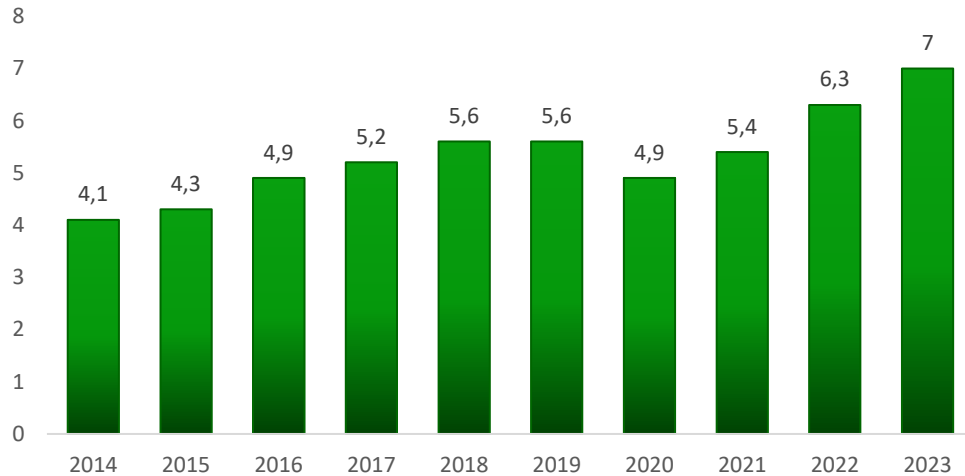
Good price – quality ratio

Long term experience



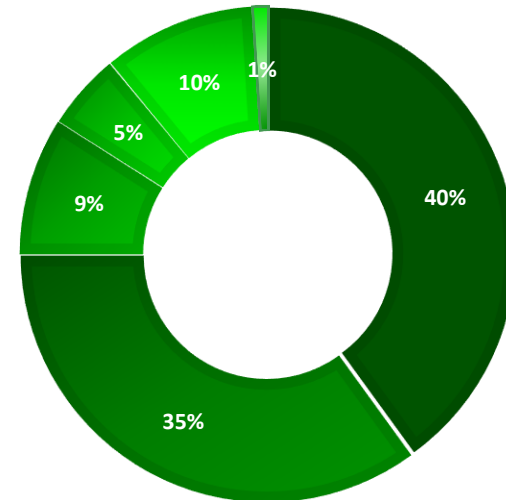
Turnover and export

BCT turnover, million of EUR



Sales by geographic area (2023)

■ Germany ■ Switzerland ■ Sweden ■ France ■ Other ■ Lithuania



Certificates

- ISO 9001;
- ISO 14001;
- BS OHSAS 45001;



Main focus

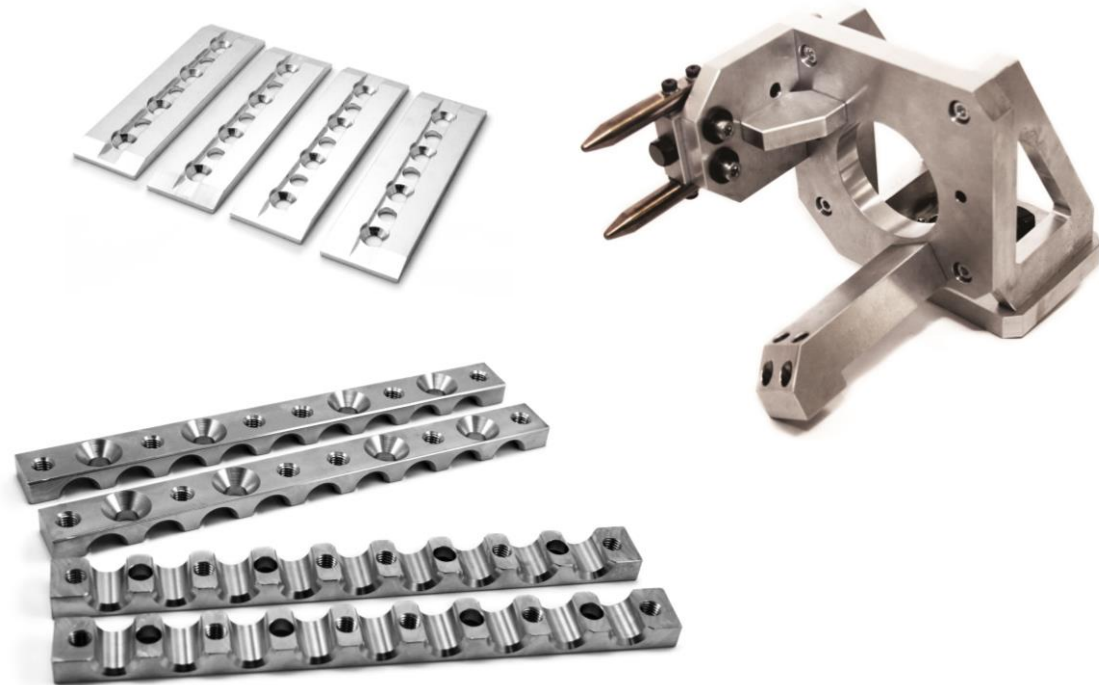
CNC Milling (40 machines)

CNC Turning (10 machines)

We specialize in medium batches from 30 items up to 500 pieces per batch.

Sets of components of different complexity and dimensions.

Assembled units.



DMG MORI **OPTIMUM**[®]
MASCHINEN - GERMANY

DOOSAN **YCM**[®]

CNC milling up to **3000x1500x600** mm;

CNC turning up to diameter **450** mm and
in length up to **300** mm.

10% of turnover are dedicated for
equipment investments each year.



Robotization

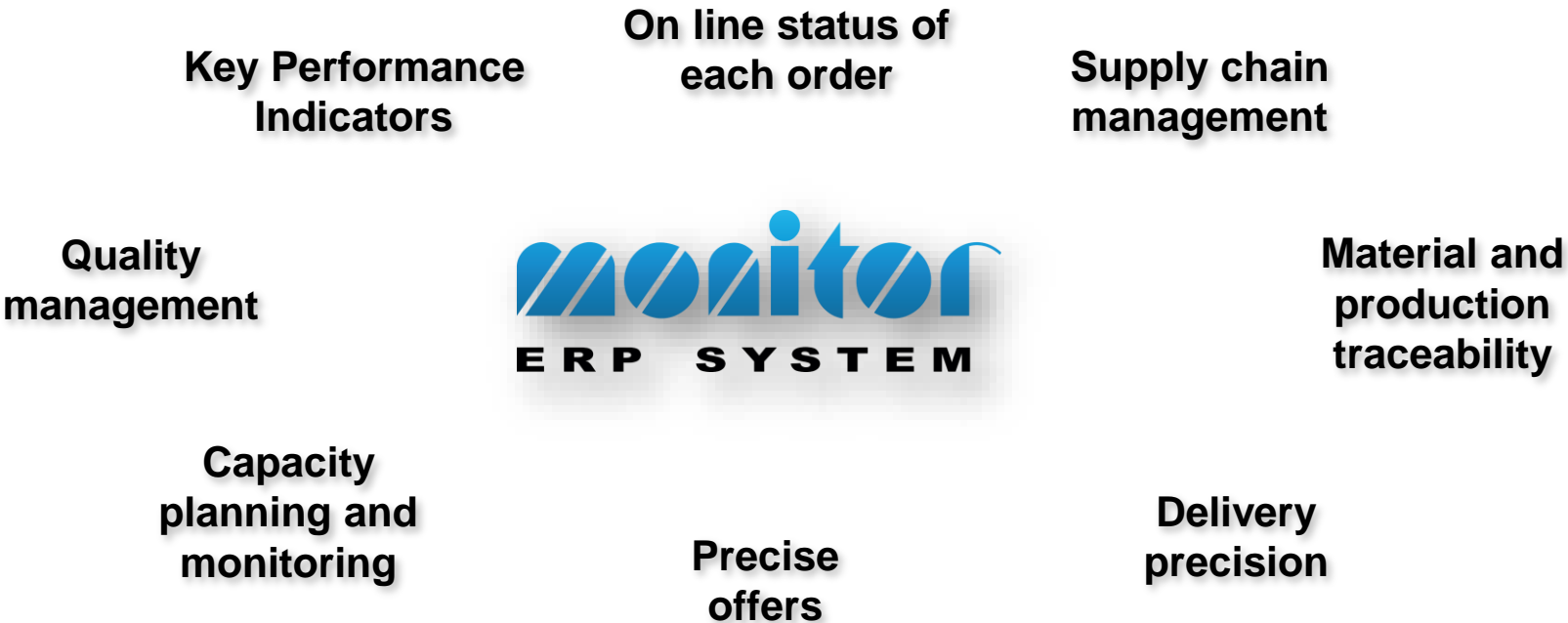
To enhance our production
6 Han's Robot co-bots
are equipped

Batch size: 30+ pcs

Max dimensions: 160x160 mm

Workpiece weight – 8 kg

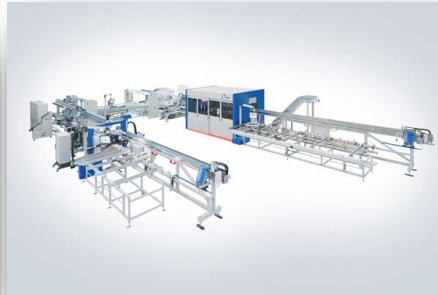




Manufacturing parts for industries



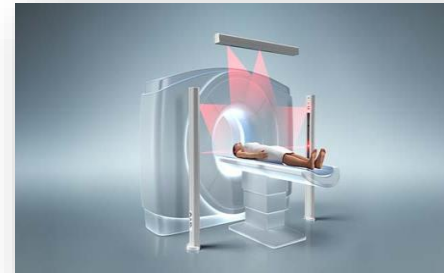
Machine building 60%



Energy 10%

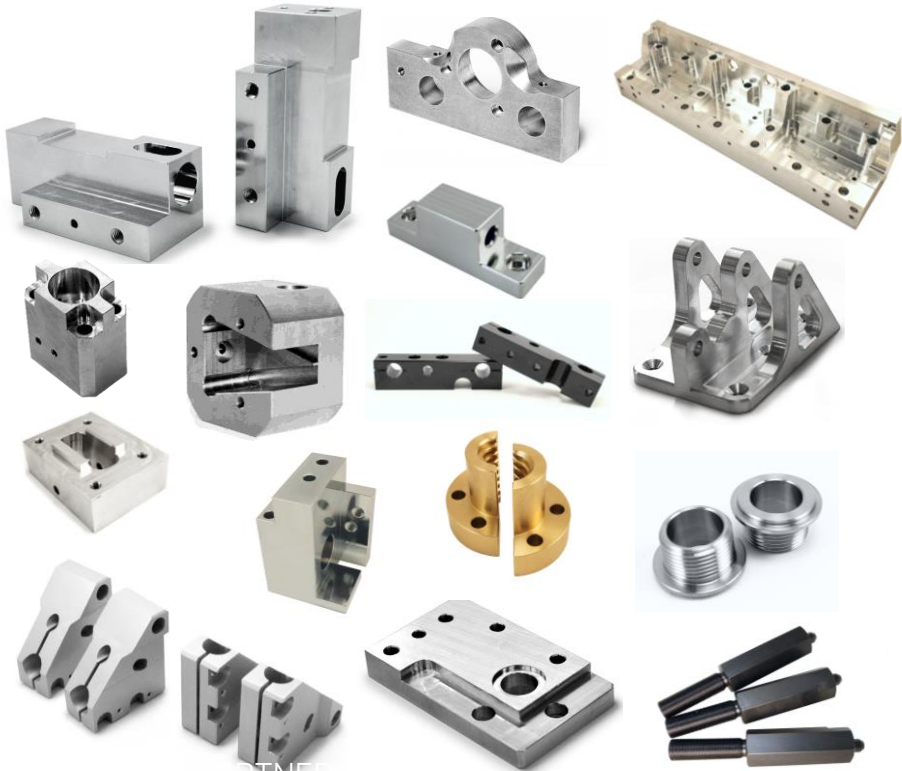


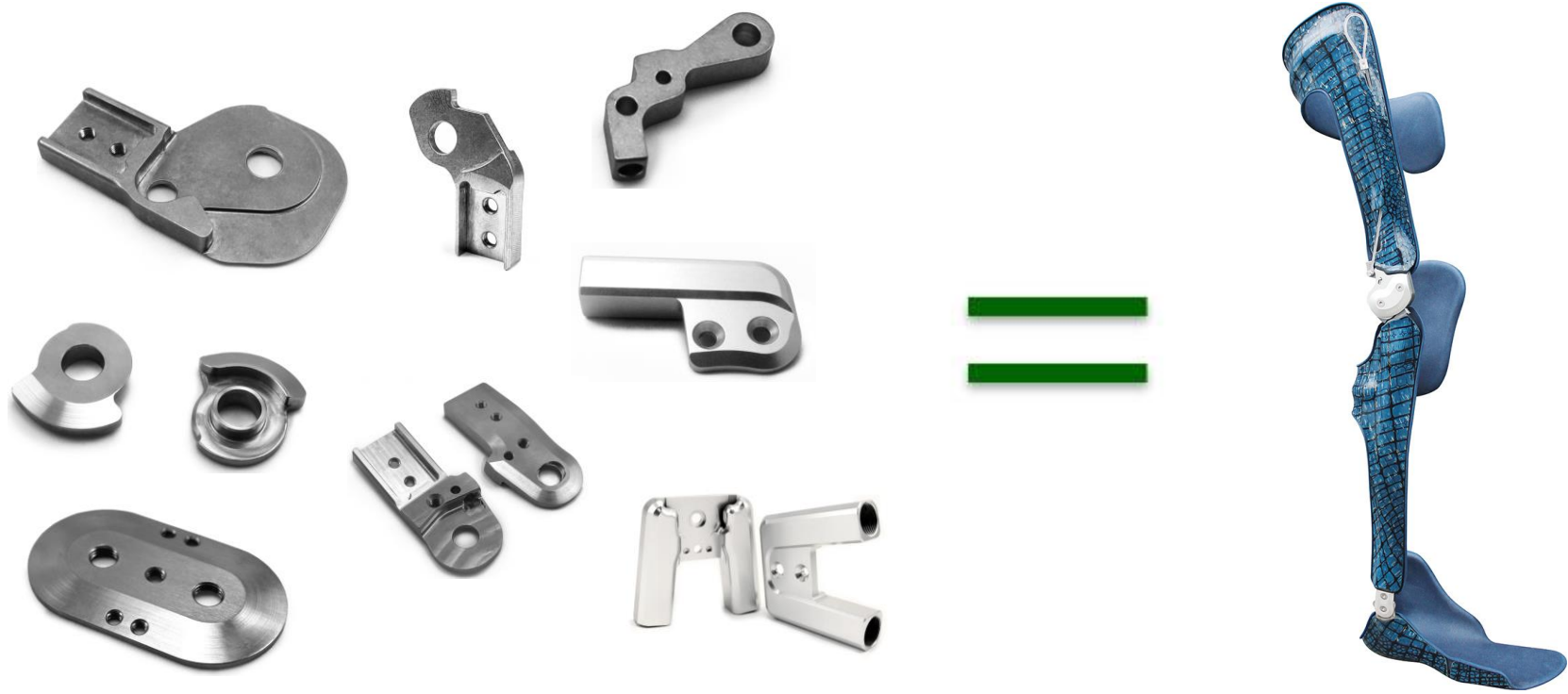
Medical and rehabilitation 20%



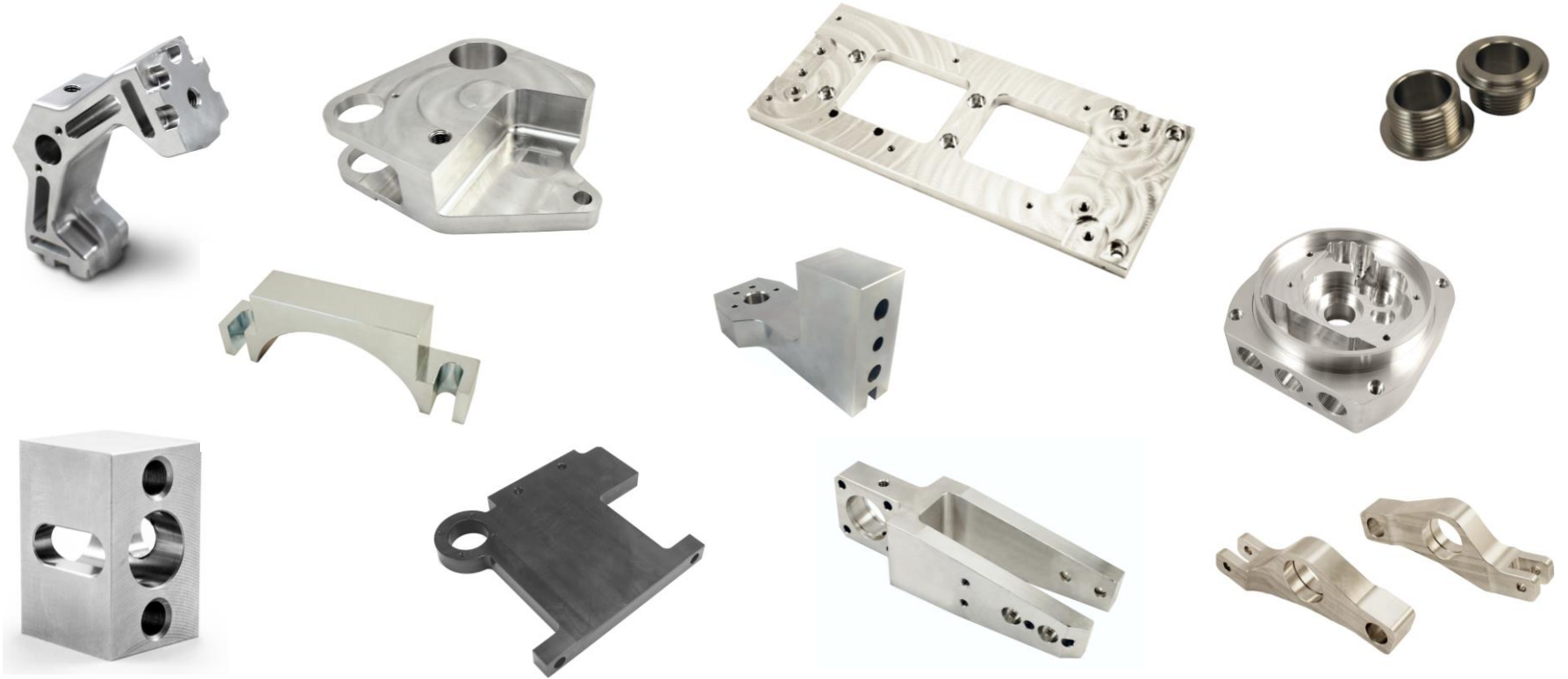
Other 10%











Continuous improvement

Each day we work to optimize our processes, maintain on-time delivery schedules, reduce production costs and maximize workplace safety:

- work in 5S, SMED, SW, KAIZEN and PDCA groups;
- all company processes are monitored by integrated KPI system;
- CNC operators preparation at internal training academy.

2000



2015



2020



Cooperation activities

Member of:



Partners:



Participating in international exhibitions:



Thank you for your attention!

Raudondvario pl. 148,
LT-47175 Kaunas, Lithuania

Tel: +370 37 314630

E-mail: sales@bct-parts.com

More information:

Company [Website](#)

Presentation [Video](#)

